




## Product datasheet

# Anti-Cofilin antibody [1A1] ab54532

★★★★★ [6 Abreviews](#) [28 References](#) [5 Images](#)

### Overview

---

<b>Product name</b>	Anti-Cofilin antibody [1A1]
<b>Description</b>	Mouse monoclonal [1A1] to Cofilin
<b>Host species</b>	Mouse
<b>Tested applications</b>	<b>Suitable for:</b> WB, IHC-P, ICC/IF
<b>Species reactivity</b>	<b>Reacts with:</b> Mouse, Rat, Human <b>Predicted to work with:</b> Sheep, Cow, Pig, Cynomolgus monkey 
<b>Immunogen</b>	Recombinant full length protein (GST-tag) corresponding to Human Cofilin. AAH11005 Sequence:  MASGVAVSDGVIKVFNDMKVRKSSTPEEVKKRKKAVLFC LSEDKKNILE EGKEILVGDVGGQTVDDPYATFAKMLPDKDCRYALYDATYE TKESKKEDLV FIFWAPESAPLKSCKMIYASSKDAIKKKLTGIKHELQANCYE GVKDRCTLA EKLGGSAVISLEGKPL  Database link: <a href="#">P23528</a>   <a href="#">Run BLAST with</a>  <a href="#">Run BLAST with</a>
<b>Positive control</b>	WB: HeLa, PC-12 and NIH/3T3 cell lysate. IHC-P: Human breast cancer tissue. ICC/IF: HeLa cells.
<b>General notes</b>	<p>This product was changed from ascites to tissue culture supernatant on 17/04/2019. Please note that the dilutions may need to be adjusted accordingly. If you have any questions, please do not hesitate to contact our scientific support team.</p> <p>The Life Science industry has been in the grips of a reproducibility crisis for a number of years. Abcam is leading the way in addressing this with our range of recombinant monoclonal antibodies and knockout edited cell lines for gold-standard validation. Please check that this product meets your needs before purchasing.</p> <p>If you have any questions, special requirements or concerns, please send us an inquiry and/or contact our Support team ahead of purchase. Recommended alternatives for this product can be found below, along with publications, customer reviews and Q&amp;As</p>

### Properties

---

<b>Form</b>	Liquid
<b>Storage instructions</b>	Shipped at 4°C. Upon delivery aliquot and store at -20°C or -80°C. Avoid repeated freeze / thaw cycles.
<b>Storage buffer</b>	pH: 7.40 Constituent: PBS
<b>Purity</b>	Tissue culture supernatant
<b>Clonality</b>	Monoclonal
<b>Clone number</b>	1A1
<b>Isotype</b>	IgG2a
<b>Light chain type</b>	kappa

## Applications

**The Abpromise guarantee** Our **Abpromise guarantee** covers the use of ab54532 in the following tested applications.

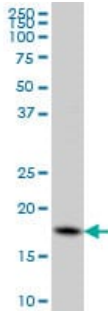
The application notes include recommended starting dilutions; optimal dilutions/concentrations should be determined by the end user.

Application	Abreviews	Notes
WB	★★★★★ (5)	Use at an assay dependent concentration. Predicted molecular weight: 18 kDa.
IHC-P		Use at an assay dependent concentration.
ICC/IF		Use at an assay dependent concentration.

## Target

<b>Function</b>	Controls reversibly actin polymerization and depolymerization in a pH-sensitive manner. It has the ability to bind G- and F-actin in a 1:1 ratio of cofilin to actin. It is the major component of intranuclear and cytoplasmic actin rods.
<b>Tissue specificity</b>	Widely distributed in various tissues.
<b>Sequence similarities</b>	Belongs to the actin-binding proteins ADF family. Contains 1 ADF-H domain.
<b>Post-translational modifications</b>	Phosphorylated on Ser-3 in resting cells.
<b>Cellular localization</b>	Nucleus matrix. Cytoplasm > cytoskeleton. Almost completely in nucleus in cells exposed to heat shock or 10% dimethyl sulfoxide.

## Images



Western blot - Anti-Cofilin antibody [1A1] (ab54532)

Anti-Cofilin antibody [1A1] (ab54532) at 1  $\mu$ g + HeLa (human epithelial cell line from cervix adenocarcinoma) whole cell lysate at 25  $\mu$ g

**Predicted band size:** 18 kDa

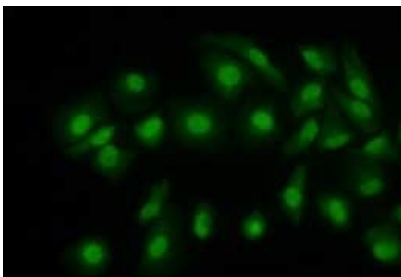
This image was generated using the ascites version of the product



Immunohistochemistry (Formalin/PFA-fixed paraffin-embedded sections) - Anti-Cofilin antibody [1A1] (ab54532)

Formalin-fixed, paraffin-embedded human breast cancer tissue stained for Cofilin with ab54532 at 1.5  $\mu$ g/ml in immunohistochemical analysis.

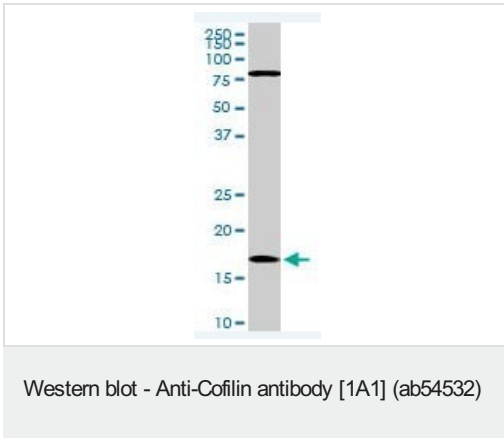
This image was generated using the ascites version of the product.



Immunocytochemistry/ Immunofluorescence - Anti-Cofilin antibody [1A1] (ab54532)

HeLa (human epithelial cell line from cervix adenocarcinoma) cells stained for Cofilin (green) using ab54532 at 10  $\mu$ g/ml in ICC/IF.

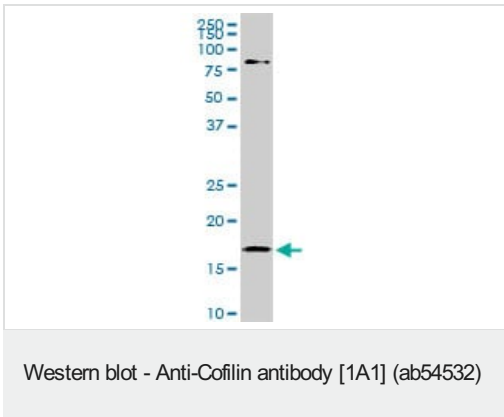
This image was generated using the ascites version of the product.



Anti-Cofilin antibody [1A1] (ab54532) at 1 µg/ml + NIH/3T3 (mouse embryo fibroblast cell line) cell lysate

**Predicted band size:** 18 kDa

This image was generated using the ascites version of the product.



Anti-Cofilin antibody [1A1] (ab54532) at 1 µg/ml + PC-12 (rat adrenal gland pheochromocytoma cell line) cell lysate

**Predicted band size:** 18 kDa

This image was generated using the ascites version of the product.

**Please note:** All products are "FOR RESEARCH USE ONLY. NOT FOR USE IN DIAGNOSTIC PROCEDURES"

### Our Abpromise to you: Quality guaranteed and expert technical support

- Replacement or refund for products not performing as stated on the datasheet
- Valid for 12 months from date of delivery
- Response to your inquiry within 24 hours
- We provide support in Chinese, English, French, German, Japanese and Spanish
- Extensive multi-media technical resources to help you
- We investigate all quality concerns to ensure our products perform to the highest standards

If the product does not perform as described on this datasheet, we will offer a refund or replacement. For full details of the Abpromise, please visit <https://www.abcam.com/abpromise> or contact our technical team.

### Terms and conditions

- Guarantee only valid for products bought direct from Abcam or one of our authorized distributors