




Product datasheet

Anti-COL16A1 antibody - C-terminal ab231044

3 Images

Overview

Product name	Anti-COL16A1 antibody - C-terminal
Description	Rabbit polyclonal to COL16A1 - C-terminal
Host species	Rabbit
Tested applications	Suitable for: WB, IHC-P
Species reactivity	Reacts with: Human Predicted to work with: Mouse 
Immunogen	Recombinant fragment (His-T7-tag) corresponding to Human COL16A1 aa 1400 to the C-terminus (C terminal). Database link: Q07092-1 <div>  Run BLAST with  Run BLAST with </div>
Positive control	WB: Recombinant human COL16A1 protein; Human serum. IHC-P: Human lung tissue.
General notes	<p>The Life Science industry has been in the grips of a reproducibility crisis for a number of years. Abcam is leading the way in addressing this with our range of recombinant monoclonal antibodies and knockout edited cell lines for gold-standard validation. Please check that this product meets your needs before purchasing.</p> <p>If you have any questions, special requirements or concerns, please send us an inquiry and/or contact our Support team ahead of purchase. Recommended alternatives for this product can be found below, along with publications, customer reviews and Q&As</p>

Properties

Form	Liquid
Storage instructions	Shipped at 4°C. Store at +4°C short term (1-2 weeks). Upon delivery aliquot. Store at -20°C long term. Avoid freeze / thaw cycle.
Storage buffer	pH: 7.40 Preservative: 0.02% Sodium azide Constituents: 44.12% PBS, 55.77% Glycerol (glycerin, glycerine)
Purity	Immunogen affinity purified
Purification notes	ab231044 was purified by antigen-specific affinity chromatography followed by Protein A affinity chromatography.
Clonality	Polyclonal

Isotype

IgG

Applications

The Abpromise guarantee

Our **Abpromise guarantee** covers the use of ab231044 in the following tested applications.

The application notes include recommended starting dilutions; optimal dilutions/concentrations should be determined by the end user.

Application	Abreviews	Notes
WB		Use a concentration of 0.2 - 2 µg/ml. Predicted molecular weight: 158 kDa.
IHC-P		Use a concentration of 5 - 20 µg/ml.

Target

Function

Involved in mediating cell attachment and inducing integrin-mediated cellular reactions, such as cell spreading and alterations in cell morphology.

Tissue specificity

In papillary dermis, is a component of specialized fibrillin-1-containing microfibrils, whereas in territorial cartilage matrix, it is localized to a discrete population of thin, weakly banded collagen fibrils in association with other collagens (at protein level). In the placenta, where it is found in the amnion, a membranous tissue lining the amniotic cavity. Within the amnion, it is found in an acellular, relatively dense layer of a complex network of reticular fibers. Also located to a fibroblast layer beneath this dense layer. Exists in tissues in association with other types of collagen.

Sequence similarities

Belongs to the fibril-associated collagens with interrupted helices (FACIT) family. Contains 1 TSP N-terminal (TSPN) domain.

Developmental stage

Transiently elevated expression during gestation, and decrease at term.

Domain

This sequence defines eighteen different domains, nine triple-helical domains (COL9 to COL1) and ten non-triple-helical domains (NC10 to NC1). The numerous interruptions in the triple helix may make this molecule either elastic or flexible.

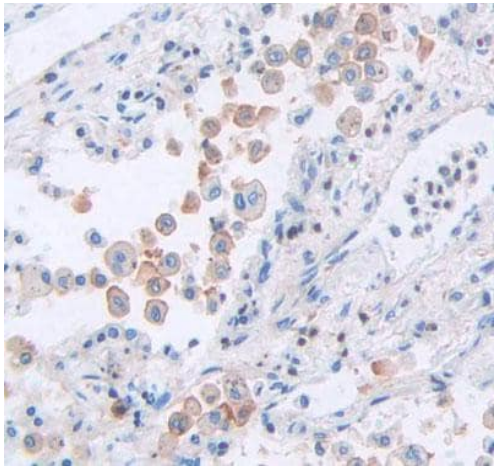
Post-translational modifications

Prolines at the third position of the tripeptide repeating unit (G-X-Y) are hydroxylated in some or all of the chains.
Glycosylated.

Cellular localization

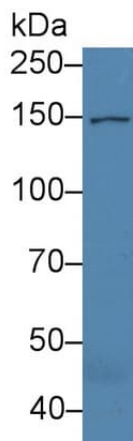
Secreted > extracellular space > extracellular matrix.

Images



Immunohistochemistry (Formalin/PFA-fixed paraffin-embedded sections) - Anti-COL16A1 antibody - C-terminal (ab231044)

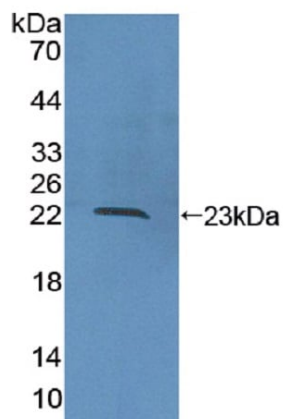
Formalin-fixed, paraffin-embedded human lung tissue stained for COL16A1 with ab231044 at 20 µg/ml in immunohistochemical analysis. DAB staining.



Western blot - Anti-COL16A1 antibody - C-terminal (ab231044)

Anti-COL16A1 antibody - C-terminal (ab231044) at 3 µg/ml + human serum

Predicted band size: 158 kDa



Western blot - Anti-COL16A1 antibody - C-terminal (ab231044)

Anti-COL16A1 antibody - C-terminal (ab231044) at 2 µg/ml + recombinant human COL16A1 protein

Predicted band size: 158 kDa

Please note: All products are "FOR RESEARCH USE ONLY. NOT FOR USE IN DIAGNOSTIC PROCEDURES"

Our Abpromise to you: Quality guaranteed and expert technical support

- Replacement or refund for products not performing as stated on the datasheet
- Valid for 12 months from date of delivery
- Response to your inquiry within 24 hours
- We provide support in Chinese, English, French, German, Japanese and Spanish
- Extensive multi-media technical resources to help you
- We investigate all quality concerns to ensure our products perform to the highest standards

If the product does not perform as described on this datasheet, we will offer a refund or replacement. For full details of the Abpromise, please visit <https://www.abcam.com/abpromise> or contact our technical team.

Terms and conditions

- Guarantee only valid for products bought direct from Abcam or one of our authorized distributors