


## Product datasheet

# Anti-Collagen IV alpha 1 antibody ab189408

★★★★★ [1 Abreviews](#) [2 References](#) [1 Image](#)

### Overview

<b>Product name</b>	Anti-Collagen IV alpha 1 antibody
<b>Description</b>	Rabbit polyclonal to Collagen IV alpha 1
<b>Host species</b>	Rabbit
<b>Specificity</b>	ab189408 recognizes extracellular - basement membranes.
<b>Tested applications</b>	<b>Suitable for:</b> IHC-P
<b>Species reactivity</b>	<b>Reacts with:</b> Human <b>Predicted to work with:</b> Rat, Cow, Pig 
<b>Immunogen</b>	Full length native protein (purified) corresponding to Human Collagen IV alpha 1. Isolated from Human placenta Database link: <a href="#">P02462</a>
<b>Positive control</b>	Human kidney tissue, glomerulus.
<b>General notes</b>	<p>The Life Science industry has been in the grips of a reproducibility crisis for a number of years. Abcam is leading the way in addressing this with our range of recombinant monoclonal antibodies and knockout edited cell lines for gold-standard validation. Please check that this product meets your needs before purchasing.</p> <p>If you have any questions, special requirements or concerns, please send us an inquiry and/or contact our Support team ahead of purchase. Recommended alternatives for this product can be found below, along with publications, customer reviews and Q&amp;As</p>

### Properties

<b>Form</b>	Liquid
<b>Storage instructions</b>	Shipped at 4°C. Store at +4°C short term (1-2 weeks). Upon delivery aliquot. Store at -20°C long term. Avoid freeze / thaw cycle.
<b>Storage buffer</b>	Preservative: 0.09% Sodium azide
<b>Purity</b>	Whole antiserum
<b>Clonality</b>	Polyclonal
<b>Isotype</b>	IgG

### Applications

## Applications

### The Abpromise guarantee

Our **Abpromise guarantee** covers the use of ab189408 in the following tested applications.

The application notes include recommended starting dilutions; optimal dilutions/concentrations should be determined by the end user.

Application	Abreviews	Notes
IHC-P		1/75 - 1/100. Sections should be pretreated with 1 mg/ml pepsin in 0.01 N HCl for 30 minutes at room temperature.

## Target

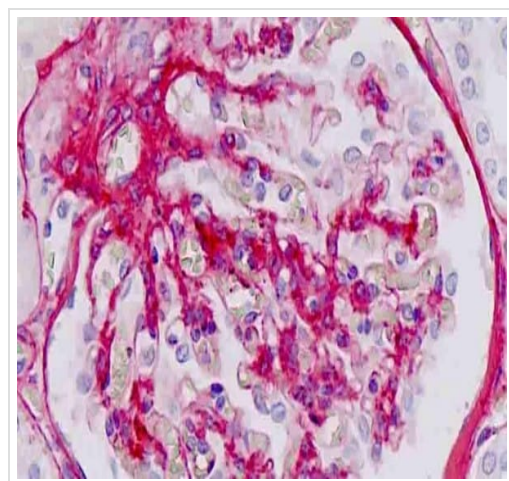
### Relevance

Type IV collagen is the major structural component of glomerular basement membranes (GBM), forming a 'chicken-wire' meshwork together with laminins, proteoglycans and entactin/nidogen. Arresten, comprising the C-terminal NC1 domain, inhibits angiogenesis and tumor formation. The C-terminal half is found to possess the anti-angiogenic activity. Specifically inhibits endothelial cell proliferation, migration and tube formation. Inhibits expression of hypoxia-inducible factor 1alpha and ERK1/2 and p38 MAPK activation. Ligand for alpha1/beta1 integrin.

### Cellular localization

Secreted > extracellular space > extracellular matrix > basement membrane.

## Images



Immunohistochemistry of formalin-fixed, paraffin-embedded Human kidney, glomerulus, labeling Collagen IV alpha 1 with ab189408 at a 1/75 dilution.

Immunohistochemistry (Formalin/PFA-fixed paraffin-embedded sections) - Anti-Collagen IV alpha 1 antibody (ab189408)

**Please note:** All products are "FOR RESEARCH USE ONLY. NOT FOR USE IN DIAGNOSTIC PROCEDURES"

## Our Abpromise to you: Quality guaranteed and expert technical support

- Replacement or refund for products not performing as stated on the datasheet
- Valid for 12 months from date of delivery

- Response to your inquiry within 24 hours
- We provide support in Chinese, English, French, German, Japanese and Spanish
- Extensive multi-media technical resources to help you
- We investigate all quality concerns to ensure our products perform to the highest standards

If the product does not perform as described on this datasheet, we will offer a refund or replacement. For full details of the Abpromise, please visit <https://www.abcam.com/abpromise> or contact our technical team.

#### **Terms and conditions**

---

- Guarantee only valid for products bought direct from Abcam or one of our authorized distributors