


## Product datasheet

# Anti-COMT antibody ab129504

★★★★★ [1 Abreviews](#) [3 Images](#)

### Overview

---

<b>Product name</b>	Anti-COMT antibody
<b>Description</b>	Rabbit polyclonal to COMT
<b>Host species</b>	Rabbit
<b>Tested applications</b>	<b>Suitable for:</b> IHC-P, WB, IP
<b>Species reactivity</b>	<b>Reacts with:</b> Human <b>Predicted to work with:</b> Chimpanzee, Gorilla, Orangutan 
<b>Immunogen</b>	Synthetic peptide, corresponding to a region within amino acids 221-271 of Human COMT (NP_000745.1).
<b>Positive control</b>	Whole cell lysate from HeLa, 293T and Jurkat cells.
<b>General notes</b>	<p>The Life Science industry has been in the grips of a reproducibility crisis for a number of years. Abcam is leading the way in addressing this with our range of recombinant monoclonal antibodies and knockout edited cell lines for gold-standard validation. Please check that this product meets your needs before purchasing.</p> <p>If you have any questions, special requirements or concerns, please send us an inquiry and/or contact our Support team ahead of purchase. Recommended alternatives for this product can be found below, along with publications, customer reviews and Q&amp;As</p>

### Properties

---

<b>Form</b>	Liquid
<b>Storage instructions</b>	Shipped at 4°C. Store at +4°C.
<b>Storage buffer</b>	pH: 7 Preservative: 0.09% Sodium azide Constituent: 99% Tris citrate/phosphate
	pH 7 to 8.
<b>Purity</b>	Immunogen affinity purified
<b>Clonality</b>	Polyclonal
<b>Isotype</b>	IgG

## Applications

### The Abpromise guarantee

Our **Abpromise guarantee** covers the use of ab129504 in the following tested applications.

The application notes include recommended starting dilutions; optimal dilutions/concentrations should be determined by the end user.

Application	Abreviews	Notes
IHC-P	★★★★★ (1)	1/500 - 1/2000. Perform heat mediated antigen retrieval with citrate buffer pH 6 before commencing with IHC staining protocol.
WB		1/2000 - 1/10000. Predicted molecular weight: 30 kDa.
IP		Use at 2-10 µg/mg of lysate.

## Target

### Function

Catalyzes the O-methylation, and thereby the inactivation, of catecholamine neurotransmitters and catechol hormones. Also shortens the biological half-lives of certain neuroactive drugs, like L-DOPA, alpha-methyl DOPA and isoproterenol.

### Tissue specificity

Brain, liver, placenta, lymphocytes and erythrocytes.

### Sequence similarities

Belongs to the mammalian catechol-O-methyltransferase family.

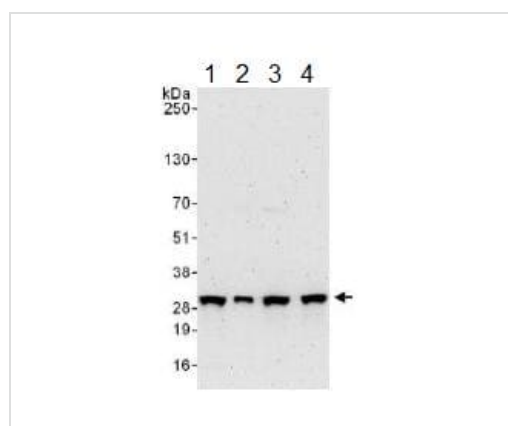
### Post-translational modifications

The N-terminus is blocked.

### Cellular localization

Cytoplasm and Cell membrane.

## Images



Western blot - Anti-COMT antibody (ab129504)

**All lanes** : Anti-COMT antibody (ab129504) at 0.1 µg/ml

**Lane 1** : Whole cell lysate from HeLa cells at 50 µg

**Lane 2** : Whole cell lysate from HeLa cells at 15 µg

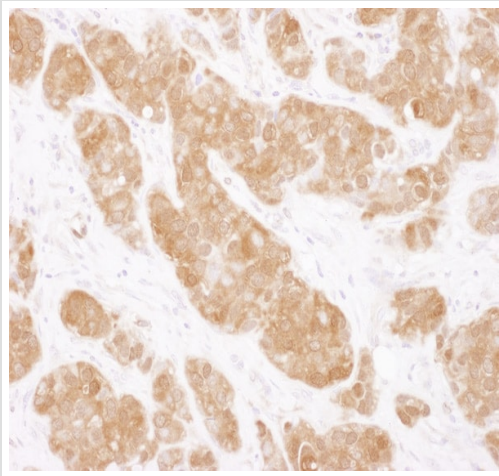
**Lane 3** : Whole cell lysate from 293T cells at 50 µg

**Lane 4** : Whole cell lysate from Jurkat cells at 50 µg

Developed using the ECL technique.

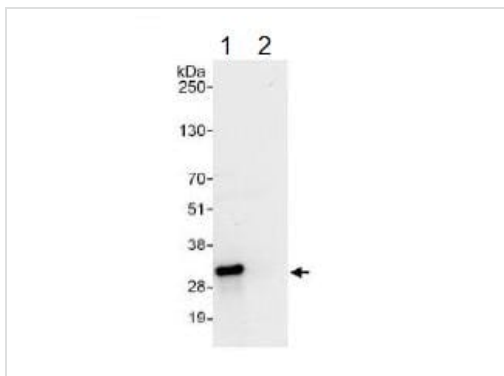
**Predicted band size:** 30 kDa

**Exposure time:** 3 minutes



Immunohistochemistry (Formalin/PFA-fixed paraffin-embedded sections) analysis of human breast carcinoma tissue labelling COMT with ab129504 at 1/1000 (1µg/ml). Detection: DAB.

Immunohistochemistry (Formalin/PFA-fixed paraffin-embedded sections) - Anti-COMT antibody (ab129504)



ab129504 at 1 µg/ml staining COMT by WB, following immunoprecipitation of whole cell lysate from HeLa cells. Lane 1; IP using ab129504 at 6 µg/mg lysate. Lane 2; IP using control IgG. 1 mg of lysate was used for IP and 20% of IP was loaded. Detection utilised Chemiluminescence with a 10 second exposure.

Immunoprecipitation - Anti-COMT antibody (ab129504)

**Please note:** All products are "FOR RESEARCH USE ONLY. NOT FOR USE IN DIAGNOSTIC PROCEDURES"

### Our Abpromise to you: Quality guaranteed and expert technical support

- Replacement or refund for products not performing as stated on the datasheet
- Valid for 12 months from date of delivery
- Response to your inquiry within 24 hours
- We provide support in Chinese, English, French, German, Japanese and Spanish
- Extensive multi-media technical resources to help you
- We investigate all quality concerns to ensure our products perform to the highest standards

If the product does not perform as described on this datasheet, we will offer a refund or replacement. For full details of the Abpromise, please visit <https://www.abcam.com/abpromise> or contact our technical team.

### **Terms and conditions**

---

- Guarantee only valid for products bought direct from Abcam or one of our authorized distributors