

Anti-Corin antibody ab230311

2 Images

Overview

Product name	Anti-Corin antibody
Description	Rabbit polyclonal to Corin
Host species	Rabbit
Tested applications	Suitable for: WB, IHC-P
Species reactivity	Reacts with: Mouse, Rat, Human
Immunogen	Recombinant fragment corresponding to Human Corin aa 1-110. Database link: Q9Y5Q5
Positive control	WB: Rat heart tissue; Mouse liver tissue; HepG2 whole cell lysate. IHC-P: Human heart tissue.
General notes	<p>The Life Science industry has been in the grips of a reproducibility crisis for a number of years. Abcam is leading the way in addressing this with our range of recombinant monoclonal antibodies and knockout edited cell lines for gold-standard validation. Please check that this product meets your needs before purchasing.</p> <p>If you have any questions, special requirements or concerns, please send us an inquiry and/or contact our Support team ahead of purchase. Recommended alternatives for this product can be found below, along with publications, customer reviews and Q&As</p>

Properties

Form	Liquid
Storage instructions	Shipped at 4°C. Store at +4°C short term (1-2 weeks). Upon delivery aliquot. Store at -20°C long term. Avoid freeze / thaw cycle.
Storage buffer	pH: 7.30 Preservative: 0.02% Sodium azide Constituents: PBS, 50% Glycerol (glycerin, glycerine)
Purity	Immunogen affinity purified
Clonality	Polyclonal
Isotype	IgG

Applications

The Abpromise guarantee

Our **Abpromise guarantee** covers the use of ab230311 in the following tested applications.

The application notes include recommended starting dilutions; optimal dilutions/concentrations should be determined by the end user.

Application	Abreviews	Notes
WB		1/1000 - 1/5000. Predicted molecular weight: 117, 114 kDa.
IHC-P		1/20 - 1/200.

Target

Function

Serine-type endopeptidase involved in atrial natriuretic peptide hormone processing. Converts through proteolytic cleavage the non-functional propeptide NPPA/ANP into the active hormone which promotes natriuresis, diuresis, and vasodilatation. May also process pro-NPPB the B-type natriuretic peptide.

Tissue specificity

Highly expressed in heart. Expressed in heart myocytes.

Sequence similarities

Belongs to the peptidase S1 family.
Contains 2 FZ (frizzled) domains.
Contains 7 LDL-receptor class A domains.
Contains 1 peptidase S1 domain.
Contains 1 SRCR domain.

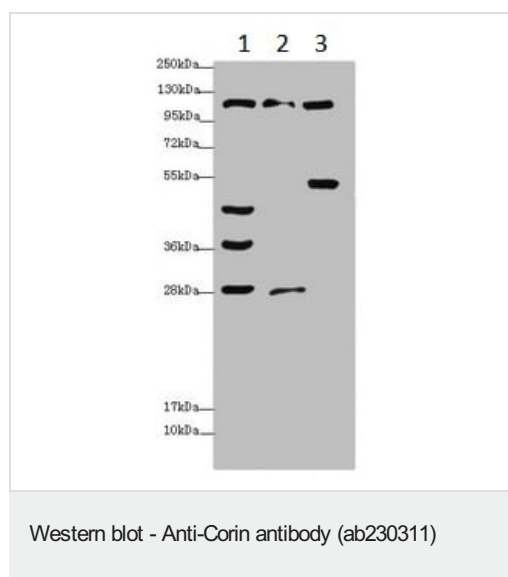
Post-translational modifications

N-glycosylated; required for processing and activation.
Activated through proteolytic processing by a trypsin-like protease; cleaved into a N-terminal propeptide and an activated corin protease fragment.
A disulfide bond links the N-terminal propeptide and the activated corin protease fragment.

Cellular localization

Cell membrane.

Images



All lanes : Anti-Corin antibody (ab230311) at 1/1000 dilution

Lane 1 : Rat heart tissue

Lane 2 : Mouse liver tissue

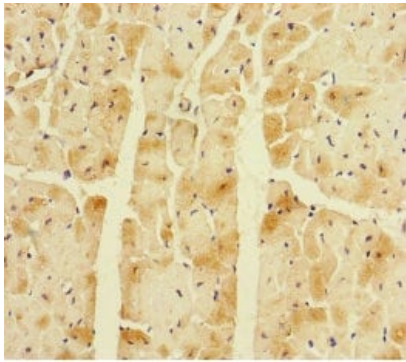
Lane 3 : HepG2 (human liver hepatocellular carcinoma cell line)
whole cell lysate

Secondary

All lanes : Goat polyclonal to rabbit IgG at 1/10000 dilution

Predicted band size: 117, 114 kDa

Observed band size: 116,28,36,45,49 kDa



Paraffin-embedded human heart tissue stained for Corin using ab230311 at 1/100 dilution in immunohistochemical analysis.

Immunohistochemistry (Formalin/PFA-fixed paraffin-embedded sections) - Anti-Corin antibody (ab230311)

Please note: All products are "FOR RESEARCH USE ONLY. NOT FOR USE IN DIAGNOSTIC PROCEDURES"

Our Abpromise to you: Quality guaranteed and expert technical support

- Replacement or refund for products not performing as stated on the datasheet
- Valid for 12 months from date of delivery
- Response to your inquiry within 24 hours
- We provide support in Chinese, English, French, German, Japanese and Spanish
- Extensive multi-media technical resources to help you
- We investigate all quality concerns to ensure our products perform to the highest standards

If the product does not perform as described on this datasheet, we will offer a refund or replacement. For full details of the Abpromise, please visit <https://www.abcam.com/abpromise> or contact our technical team.

Terms and conditions

- Guarantee only valid for products bought direct from Abcam or one of our authorized distributors