




Product datasheet

Anti-Corin antibody ab232807

3 Images

Overview

Product name	Anti-Corin antibody
Description	Rabbit polyclonal to Corin
Host species	Rabbit
Tested applications	Suitable for: WB, IHC-P
Species reactivity	Reacts with: Rat Predicted to work with: Human 
Immunogen	Recombinant fragment (His-tag) corresponding to Rat Corin aa 500-650. N-terminal tag. Expressed in E. coli. Database link: Q80YN4 <div>  Run BLAST with  Run BLAST with </div>
Positive control	WB: Recombinant rat Corin protein and rat heart tissue lysate. IHC-P: Rat heart tissue.
General notes	<p>The Life Science industry has been in the grips of a reproducibility crisis for a number of years. Abcam is leading the way in addressing this with our range of recombinant monoclonal antibodies and knockout edited cell lines for gold-standard validation. Please check that this product meets your needs before purchasing.</p> <p>If you have any questions, special requirements or concerns, please send us an inquiry and/or contact our Support team ahead of purchase. Recommended alternatives for this product can be found below, along with publications, customer reviews and Q&As</p>

Properties

Form	Liquid
Storage instructions	Shipped at 4°C. Store at +4°C short term (1-2 weeks). Upon delivery aliquot. Store at -20°C long term. Avoid freeze / thaw cycle.
Storage buffer	pH: 7.40 Preservative: 0.02% Sodium azide Constituents: 44.12% PBS, 55.77% Glycerol (glycerin, glycerine)
Purity	Protein A purified
Purification notes	Antigen-specific affinity chromatography followed by Protein A affinity chromatography
Clonality	Polyclonal
Isotype	IgG

Applications

The Abpromise guarantee

Our **Abpromise guarantee** covers the use of ab232807 in the following tested applications.

The application notes include recommended starting dilutions; optimal dilutions/concentrations should be determined by the end user.

Application	Abreviews	Notes
WB		Use a concentration of 0.2 - 2 µg/ml. Predicted molecular weight: 123 kDa.
IHC-P		Use a concentration of 5 - 20 µg/ml.

Target

Function

Serine-type endopeptidase involved in atrial natriuretic peptide hormone processing. Converts through proteolytic cleavage the non-functional propeptide NPPA/ANP into the active hormone which promotes natriuresis, diuresis, and vasodilatation. May also process pro-NPPB the B-type natriuretic peptide.

Tissue specificity

Highly expressed in heart. Expressed in heart myocytes.

Sequence similarities

Belongs to the peptidase S1 family.
Contains 2 FZ (frizzled) domains.
Contains 7 LDL-receptor class A domains.
Contains 1 peptidase S1 domain.
Contains 1 SRCR domain.

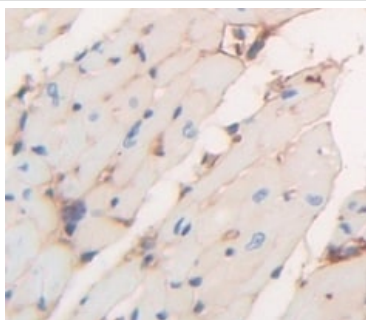
Post-translational modifications

N-glycosylated; required for processing and activation.
Activated through proteolytic processing by a trypsin-like protease; cleaved into a N-terminal propeptide and an activated corin protease fragment.
A disulfide bond links the N-terminal propeptide and the activated corin protease fragment.

Cellular localization

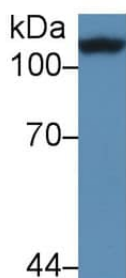
Cell membrane.

Images



Formalin-fixed, paraffin-embedded rat heart tissue stained for Corin using ab232807 at 20 µg/ml in immunohistochemical analysis. DAB staining.

Immunohistochemistry (Formalin/PFA-fixed paraffin-embedded sections) - Anti-Corin antibody (ab232807)



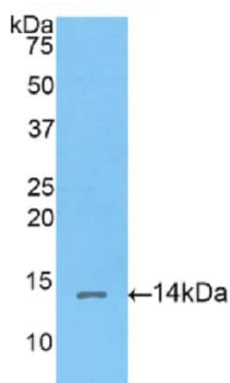
Western blot - Anti-Corin antibody (ab232807)

Anti-Corin antibody (ab232807) at 2 µg/ml + Rat heart tissue lysate

Secondary

HRP-Linked Goat Anti-Rabbit IgG Polyclonal at 0.2 µg/ml

Predicted band size: 123 kDa



Western blot - Anti-Corin antibody (ab232807)

Anti-Corin antibody (ab232807) at 2 µg/ml + Recombinant rat Corin protein

Predicted band size: 123 kDa

Please note: All products are "FOR RESEARCH USE ONLY. NOT FOR USE IN DIAGNOSTIC PROCEDURES"

Our Abpromise to you: Quality guaranteed and expert technical support

- Replacement or refund for products not performing as stated on the datasheet
- Valid for 12 months from date of delivery
- Response to your inquiry within 24 hours
- We provide support in Chinese, English, French, German, Japanese and Spanish
- Extensive multi-media technical resources to help you
- We investigate all quality concerns to ensure our products perform to the highest standards

If the product does not perform as described on this datasheet, we will offer a refund or replacement. For full details of the Abpromise, please visit <https://www.abcam.com/abpromise> or contact our technical team.

Terms and conditions

- Guarantee only valid for products bought direct from Abcam or one of our authorized distributors