

### Anti-COSMC antibody ab68310

★★★★★ [3 Abreviews](#) [2 Images](#)

#### Overview

<b>Product name</b>	Anti-COSMC antibody
<b>Description</b>	Mouse polyclonal to COSMC
<b>Host species</b>	Mouse
<b>Specificity</b>	This antibody is reactive against mammalian transfected lysate.
<b>Tested applications</b>	<b>Suitable for:</b> WB
<b>Species reactivity</b>	<b>Reacts with:</b> Human
<b>Immunogen</b>	Recombinant full length protein within Human COSMC. The exact immunogen sequence used to generate this antibody is proprietary information. If additional detail on the immunogen is needed to determine the suitability of the antibody for your needs, please <b><a href="#">contact</a></b> our Scientific Support team to discuss your requirements. Database link: <b><a href="#">NP_001011551.1</a></b>

#### General notes

The Life Science industry has been in the grips of a reproducibility crisis for a number of years. Abcam is leading the way in addressing this with our range of recombinant monoclonal antibodies and knockout edited cell lines for gold-standard validation. Please check that this product meets your needs before purchasing.

If you have any questions, special requirements or concerns, please send us an inquiry and/or contact our Support team ahead of purchase. Recommended alternatives for this product can be found below, along with publications, customer reviews and Q&As

#### Properties

<b>Form</b>	Liquid
<b>Storage instructions</b>	Shipped at 4°C. Upon delivery aliquot and store at -20°C or -80°C. Avoid repeated freeze / thaw cycles.
<b>Storage buffer</b>	pH: 7.40 Constituent: 100% PBS
<b>Purity</b>	Protein G purified
<b>Clonality</b>	Polyclonal
<b>Isotype</b>	IgG

## Applications

### The Abpromise guarantee

Our **Abpromise guarantee** covers the use of ab68310 in the following tested applications.

The application notes include recommended starting dilutions; optimal dilutions/concentrations should be determined by the end user.

Application	Abreviews	Notes
WB		1/500 - 1/1000. Detects a band of approximately 32 kDa (predicted molecular weight: 36 kDa).

## Target

### Function

Probable chaperone required for the generation of 1 O-glycan Gal-beta1-3GalNAc-alpha1-Ser/Thr (T antigen), which is a precursor for many extended O-glycans in glycoproteins. Probably acts as a specific molecular chaperone assisting the folding/stability of core 1 beta-3-galactosyltransferase (C1GALT1).

### Tissue specificity

Ubiquitously expressed. Abundantly expressed in salivary gland, stomach, small intestine, kidney, and testis and at intermediate levels in whole brain, cerebellum, spinal cord, thymus, spleen, trachea, lung, pancreas, ovary, and uterus.

### Involvement in disease

Defects in C1GALT1C1 are the cause of Tn syndrome (TNSYN) [MIM:300622]. Tn syndrome is a rare autoimmune disease caused by somatic mutation in the C1GALT1C1 gene in which subpopulations of blood cells of all lineages carry an incompletely glycosylated membrane glycoprotein, i.e. the Tn antigen. Since leukocytes and platelets are affected as well as red cells, anemia, leukopenia and thrombocytopenia are features. Tn-polyagglutinability is sometimes associated with leukemia or is a preleukemic state.

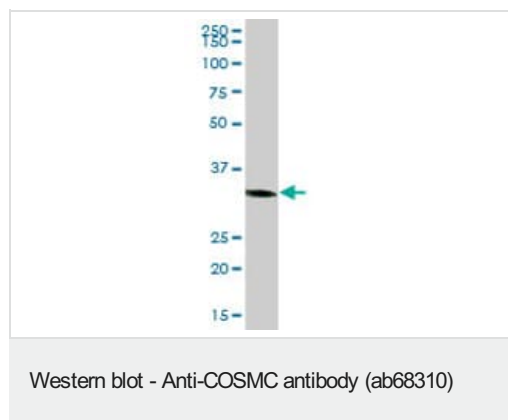
### Sequence similarities

Belongs to the glycosyltransferase 31 family. Beta3-Gal-T subfamily.

### Cellular localization

Membrane.

## Images



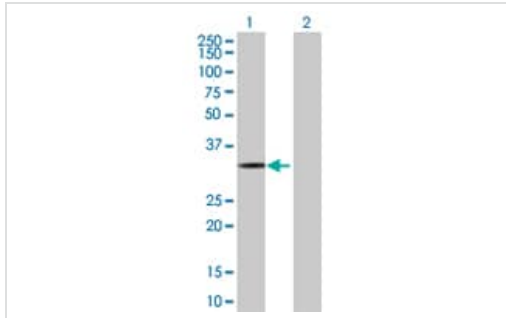
Anti-COSMC antibody (ab68310) at 1/500 dilution + human liver tissue lysate at 25 µg

### Secondary

Goat Anti-Mouse IgG (H&L)-HRP Conjugate at 1/2500 dilution

**Predicted band size:** 36 kDa

**Observed band size:** 32 kDa



Western blot - Anti-COSMC antibody (ab68310)

**All lanes :** Anti-COSMC antibody (ab68310) at 1/500 dilution

**Lane 1 :** COSMC transfected 293T cell lysate

**Lane 2 :** Non-transfected 293T cell lysate

Lysates/proteins at 25 µg per lane.

#### Secondary

**All lanes :** Goat Anti-Mouse IgG (H&L)-HRP Conjugate at 1/2500 dilution

**Predicted band size:** 36 kDa

**Observed band size:** 32 kDa

**Please note:** All products are "FOR RESEARCH USE ONLY. NOT FOR USE IN DIAGNOSTIC PROCEDURES"

#### Our Abpromise to you: Quality guaranteed and expert technical support

- Replacement or refund for products not performing as stated on the datasheet
- Valid for 12 months from date of delivery
- Response to your inquiry within 24 hours
- We provide support in Chinese, English, French, German, Japanese and Spanish
- Extensive multi-media technical resources to help you
- We investigate all quality concerns to ensure our products perform to the highest standards

If the product does not perform as described on this datasheet, we will offer a refund or replacement. For full details of the Abpromise, please visit <https://www.abcam.com/abpromise> or contact our technical team.

#### Terms and conditions

- Guarantee only valid for products bought direct from Abcam or one of our authorized distributors