

Anti-COX1 / Cyclooxygenase 1 antibody ab84602

[1 Image](#)

Overview

Product name	Anti-COX1 / Cyclooxygenase 1 antibody
Description	Rabbit polyclonal to COX1 / Cyclooxygenase 1
Host species	Rabbit
Tested applications	Suitable for: WB
Species reactivity	Reacts with: Human
Immunogen	Synthetic peptide corresponding to Human COX1/ Cyclooxygenase 1 aa 550 to the C-terminus (C terminal) conjugated to keyhole limpet haemocyanin. (Peptide available as ab93495)
Positive control	This antibody gave a positive signal in the following human whole cell lysates: A431; HUVEC.
General notes	<p>The Life Science industry has been in the grips of a reproducibility crisis for a number of years. Abcam is leading the way in addressing this with our range of recombinant monoclonal antibodies and knockout edited cell lines for gold-standard validation. Please check that this product meets your needs before purchasing.</p> <p>If you have any questions, special requirements or concerns, please send us an inquiry and/or contact our Support team ahead of purchase. Recommended alternatives for this product can be found below, along with publications, customer reviews and Q&As</p>

Properties

Form	Liquid
Storage instructions	Shipped at 4°C. Store at +4°C short term (1-2 weeks). Upon delivery aliquot. Store at -20°C or -80°C. Avoid freeze / thaw cycle.
Storage buffer	<p>pH: 7.40</p> <p>Preservative: 0.02% Sodium azide</p> <p>Constituent: PBS</p> <p>Batches of this product that have a concentration < 1mg/ml may have BSA added as a stabilising agent. If you would like information about the formulation of a specific lot, please contact our scientific support team who will be happy to help.</p>
Purity	Immunogen affinity purified
Clonality	Polyclonal

Isotype

IgG

Applications

The Abpromise guarantee

Our **Abpromise guarantee** covers the use of ab84602 in the following tested applications.

The application notes include recommended starting dilutions; optimal dilutions/concentrations should be determined by the end user.

Application	Abreviews	Notes
WB		Use a concentration of 1 µg/ml. Detects a band of approximately 73 kDa (predicted molecular weight: 68 kDa).

Target

Function

May play an important role in regulating or promoting cell proliferation in some normal and neoplastically transformed cells.

Pathway

Lipid metabolism; prostaglandin biosynthesis.

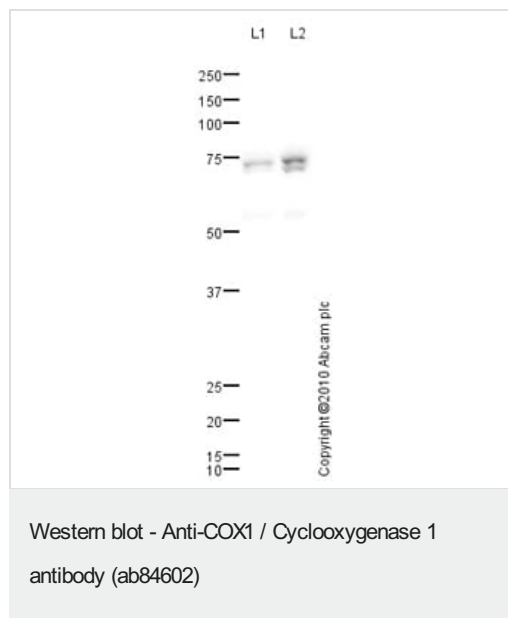
Sequence similarities

Belongs to the prostaglandin G/H synthase family.
Contains 1 EGF-like domain.

Cellular localization

Microsome membrane. Endoplasmic reticulum membrane.

Images



All lanes : Anti-COX1 / Cyclooxygenase 1 antibody (ab84602) at 1 µg/ml

Lane 1 : A431 (Human epithelial carcinoma cell line) Whole Cell Lysate

Lane 2 : HUVEC (Human Umbilical Vein Endothelial Cell) Whole Cell Lysate

Lysates/proteins at 10 µg per lane.

Secondary

All lanes : Goat polyclonal to Rabbit IgG - H&L - Pre-Adsorbed (HRP) at 1/3000 dilution

Developed using the ECL technique.

Performed under reducing conditions.

Predicted band size: 68 kDa

Observed band size: 71,73 kDa

Additional bands at: 55 kDa. We are unsure as to the identity of these extra bands.

Exposure time: 2 minutes

This antibody was raised against an immunogen that is predicted to recognize both the short and long isoforms of Human Prostaglandin G/H synthase 1 precursor (COX1). The predicted molecular weights of the short and long isoforms are 68 kDa and 64 kDa respectively. However, COX1 contains a number of potential glycosylation sites (SwissProt) which may explain its migration at a higher molecular weight than predicted.

Please note: All products are "FOR RESEARCH USE ONLY. NOT FOR USE IN DIAGNOSTIC PROCEDURES"

Our Abpromise to you: Quality guaranteed and expert technical support

- Replacement or refund for products not performing as stated on the datasheet
- Valid for 12 months from date of delivery
- Response to your inquiry within 24 hours
- We provide support in Chinese, English, French, German, Japanese and Spanish
- Extensive multi-media technical resources to help you
- We investigate all quality concerns to ensure our products perform to the highest standards

If the product does not perform as described on this datasheet, we will offer a refund or replacement. For full details of the Abpromise, please visit <https://www.abcam.com/abpromise> or contact our technical team.

Terms and conditions

- Guarantee only valid for products bought direct from Abcam or one of our authorized distributors