

Product datasheet

Anti-COX5A antibody [6E9B12D5] ab110262

[51 References](#) [3 Images](#)

Overview

Product name	Anti-COX5A antibody [6E9B12D5]
Description	Mouse monoclonal [6E9B12D5] to COX5A
Host species	Mouse
Tested applications	Suitable for: WB, ICC/IF, Flow Cyt
Species reactivity	Reacts with: Mouse, Rat, Cow, Human
Immunogen	Full length native protein (purified). This information is proprietary to Abcam and/or its suppliers.
Positive control	Isolated mitochondria from Human heart, Bovine heart, Rat heart, Mouse heart, and HepG2, Human embryonic lung-derived fibroblasts (strain MRC5), HeLa cells
General notes	<p>This antibody clone is manufactured by Abcam. If you require a custom buffer formulation or conjugation for your experiments, please contact orders@abcam.com.</p> <p>The Life Science industry has been in the grips of a reproducibility crisis for a number of years. Abcam is leading the way in addressing this with our range of recombinant monoclonal antibodies and knockout edited cell lines for gold-standard validation. Please check that this product meets your needs before purchasing.</p> <p>If you have any questions, special requirements or concerns, please send us an inquiry and/or contact our Support team ahead of purchase. Recommended alternatives for this product can be found below, along with publications, customer reviews and Q&As</p> <p>Product was previously marketed under the MitoSciences sub-brand.</p>

Properties

Form	Liquid
Storage instructions	Shipped at 4°C. Store at +4°C. Do Not Freeze.
Storage buffer	pH: 7.5 Preservative: 0.02% Sodium azide Constituent: HEPES buffered saline
Purification notes	ab110262 was produced in vitro using hybridomas grown in serum-free medium, and then purified by biochemical fractionation.
Clonality	Monoclonal
Clone number	6E9B12D5

Isotype IgG2a
Light chain type kappa

Applications

The Abpromise guarantee Our **Abpromise guarantee** covers the use of ab110262 in the following tested applications. The application notes include recommended starting dilutions; optimal dilutions/concentrations should be determined by the end user.

Application	Abreviews	Notes
WB		Use a concentration of 1 µg/ml. Predicted molecular weight: 17 kDa.
ICC/IF		Use a concentration of 5 µg/ml.
Flow Cyt		Use a concentration of 1 µg/ml. ab170191 - Mouse monoclonal IgG2a, is suitable for use as an isotype control with this antibody.

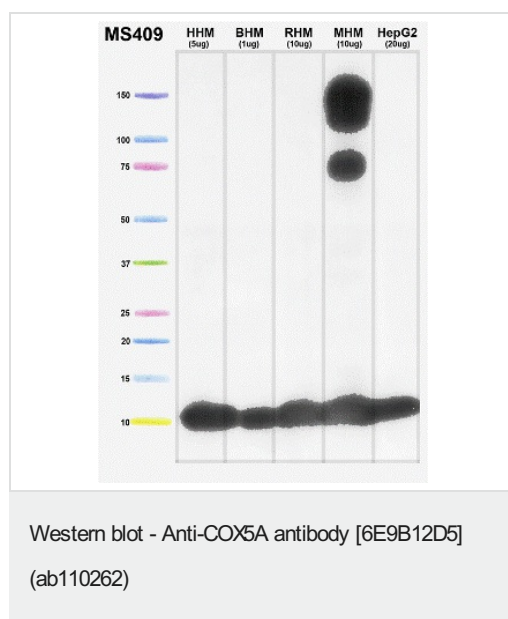
Target

Function This is the heme A-containing chain of cytochrome c oxidase, the terminal oxidase in mitochondrial electron transport.

Sequence similarities Belongs to the cytochrome c oxidase subunit 5A family.

Cellular localization Mitochondrion inner membrane.

Images



All lanes : Anti-COX5A antibody [6E9B12D5] (ab110262) at 1 µg/ml

Lane 1 : Human heart mitochondria at 5 µg

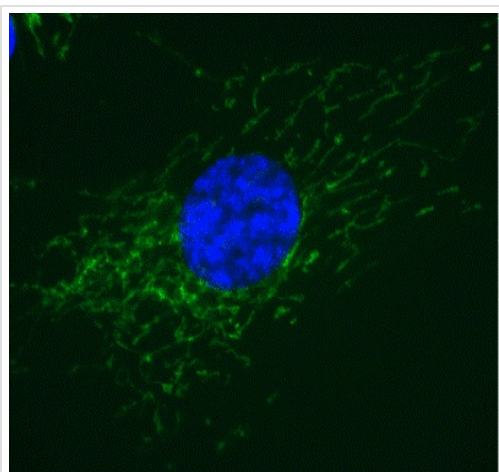
Lane 2 : Bovine heart mitochondria at 1 µg

Lane 3 : Rat heart mitochondria at 10 µg

Lane 4 : Mouse heart mitochondria at 10 µg

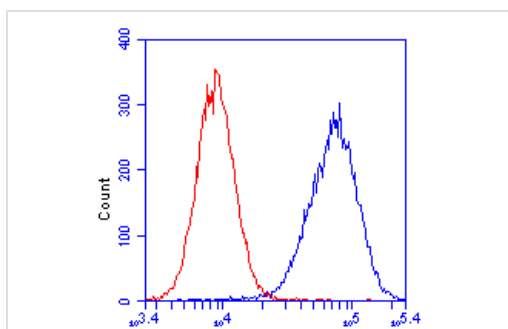
Lane 5 : HepG2 mitochondria at 20 µg

Predicted band size: 17 kDa



Immunocytochemistry/ Immunofluorescence - Anti-COX5A antibody [6E9B12D5] (ab110262)

Mitochondrial localization of COX5A. Cultured Human embryonic lung-derived fibroblasts (strain MRC5) were fixed, treated for heat-induced antigen retrieval, permeabilized and then labeled with ab110262 (10 $\mu\text{g/ml}$) followed by an AlexaFluor® 488-conjugated-goat-anti-mouse IgG2a isotype specific secondary antibody (1 $\mu\text{g/ml}$).



Flow Cytometry - Anti-COX5A antibody [6E9B12D5] (ab110262)

HeLa cells were stained with 1 $\mu\text{g/mL}$ ab110262 (blue) or an equal amount of an isotype control antibody (red) and analyzed by flow cytometry.

Please note: All products are "FOR RESEARCH USE ONLY. NOT FOR USE IN DIAGNOSTIC PROCEDURES"

Our Abpromise to you: Quality guaranteed and expert technical support

- Replacement or refund for products not performing as stated on the datasheet
- Valid for 12 months from date of delivery
- Response to your inquiry within 24 hours
- We provide support in Chinese, English, French, German, Japanese and Spanish
- Extensive multi-media technical resources to help you
- We investigate all quality concerns to ensure our products perform to the highest standards

If the product does not perform as described on this datasheet, we will offer a refund or replacement. For full details of the Abpromise, please visit <https://www.abcam.com/abpromise> or contact our technical team.

Terms and conditions

- Guarantee only valid for products bought direct from Abcam or one of our authorized distributors