


### Anti-CP110 antibody ab99338

[4 References](#) [2 Images](#)

#### Overview

<b>Product name</b>	Anti-CP110 antibody
<b>Description</b>	Rabbit polyclonal to CP110
<b>Host species</b>	Rabbit
<b>Tested applications</b>	<b>Suitable for:</b> WB, IP
<b>Species reactivity</b>	<b>Reacts with:</b> Human <b>Predicted to work with:</b> Rabbit, Horse, Guinea pig, Cow, Dog, Pig, Chimpanzee, Rhesus monkey, Gorilla, Orangutan, Elephant 
<b>Immunogen</b>	Synthetic peptide corresponding to a region within amino acids 962-1012 of Human CP110 (CAH18111.1).
<b>Positive control</b>	HeLa and 293T whole cell lysates
<b>General notes</b>	<p>The Life Science industry has been in the grips of a reproducibility crisis for a number of years. Abcam is leading the way in addressing this with our range of recombinant monoclonal antibodies and knockout edited cell lines for gold-standard validation. Please check that this product meets your needs before purchasing.</p> <p>If you have any questions, special requirements or concerns, please send us an inquiry and/or contact our Support team ahead of purchase. Recommended alternatives for this product can be found below, along with publications, customer reviews and Q&amp;As</p>

#### Properties

<b>Form</b>	Liquid
<b>Storage instructions</b>	Shipped at 4°C. Upon delivery aliquot and store at -20°C. Avoid freeze / thaw cycles.
<b>Storage buffer</b>	pH: 6.8 Preservative: 0.09% Sodium azide Constituents: 0.1% BSA, Tris buffered saline
<b>Purity</b>	Immunogen affinity purified
<b>Clonality</b>	Polyclonal
<b>Isotype</b>	IgG

#### Applications

## The Abpromise guarantee

Our **Abpromise guarantee** covers the use of ab99338 in the following tested applications.

The application notes include recommended starting dilutions; optimal dilutions/concentrations should be determined by the end user.

Application	Abreviews	Notes
WB		1/2000 - 1/10000. Predicted molecular weight: 113 kDa.
IP		Use at 2-5 µg/mg of lysate.

## Target

### Function

Necessary for centrosome duplication at different stages of procentriole formation. Collaborates with CEP97, being involved in the suppression of a cilia assembly program. Required for correct spindle formation and has a role in regulating cytokinesis and genome stability via cooperation with CALM1 and CETN2.

### Tissue specificity

Highly expressed in testis. Detected at intermediate levels in spleen, thymus, prostate, small intestine, colon and peripheral blood leukocytes.

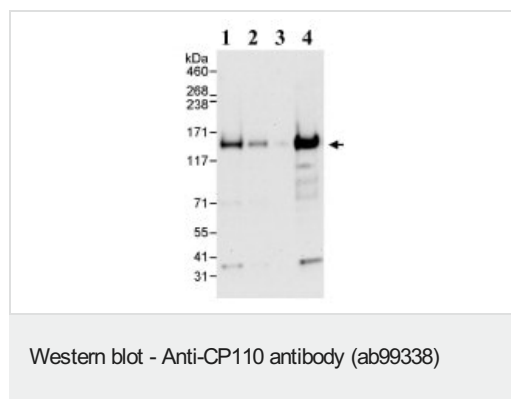
### Post-translational modifications

Phosphorylated by CDKs.  
Ubiquitinated by the SCF(Cyclin F) during G2 phase, leading to its degradation by the proteasome and preventing centrosome reduplication.

### Cellular localization

Cytoplasm > cytoskeleton > centrosome > centriole. Recruited early and then associates with the growing distal tips.

## Images



**All lanes :** Anti-CP110 antibody (ab99338) at 0.04 µg/ml

**Lane 1 :** Hela whole cell lysate at 50 µg

**Lane 2 :** Hela whole cell lysate at 15 µg

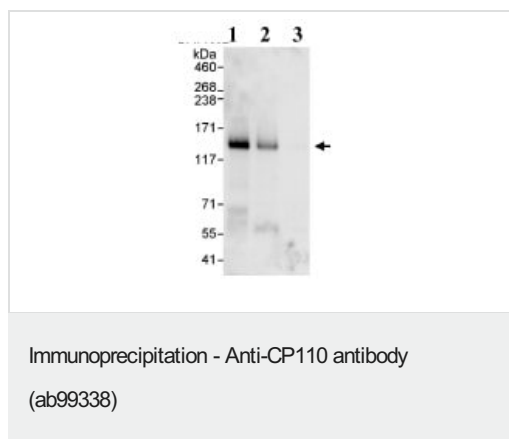
**Lane 3 :** Hela whole cell lysate at 5 µg

**Lane 4 :** 293T whole cell lysate at 50 µg

Developed using the ECL technique.

**Predicted band size:** 113 kDa

**Exposure time:** 30 seconds



Detection of Human CP110 by Immunoprecipitation (IP) from HeLa whole cell lysate (1 mg for IP, 20% of IP loaded).

1. IP with a CP110 antibody which recognizes an upstream epitope
2. IP with ab99338 at 3 µg/mg lysate
3. Control IgG IP

Subsequent WB detection was performed using ab99338 at 1 µg/ml.

**Please note:** All products are "FOR RESEARCH USE ONLY. NOT FOR USE IN DIAGNOSTIC PROCEDURES"

### Our Abpromise to you: Quality guaranteed and expert technical support

---

- Replacement or refund for products not performing as stated on the datasheet
- Valid for 12 months from date of delivery
- Response to your inquiry within 24 hours
- We provide support in Chinese, English, French, German, Japanese and Spanish
- Extensive multi-media technical resources to help you
- We investigate all quality concerns to ensure our products perform to the highest standards

If the product does not perform as described on this datasheet, we will offer a refund or replacement. For full details of the Abpromise, please visit <https://www.abcam.com/abpromise> or contact our technical team.

### Terms and conditions

---

- Guarantee only valid for products bought direct from Abcam or one of our authorized distributors