

## Product datasheet

# Anti-CPM antibody [EPR8052] ab150405

Recombinant RabMAb

[1 References](#) [7 Images](#)

### Overview

<b>Product name</b>	Anti-CPM antibody [EPR8052]
<b>Description</b>	Rabbit monoclonal [EPR8052] to CPM
<b>Host species</b>	Rabbit
<b>Tested applications</b>	<b>Suitable for:</b> WB, IHC-P <b>Unsuitable for:</b> Flow Cyt or ICC/IF
<b>Species reactivity</b>	<b>Reacts with:</b> Human
<b>Immunogen</b>	Synthetic peptide within Human CPM aa 1-100 (N terminal). The exact sequence is proprietary.
<b>Positive control</b>	WB: Recombinant Human CPM protein ( <a href="#">ab132341</a> ), 293T cell lysate and human fetal kidney, fetal liver and placenta tissue lysates. IHC-P: Human hepatocellular carcinoma, endometrium and uterus tissues.
<b>General notes</b>	<p>This product is a recombinant monoclonal antibody, which offers several advantages including:</p> <ul style="list-style-type: none"><li>- High batch-to-batch consistency and reproducibility</li><li>- Improved sensitivity and specificity</li><li>- Long-term security of supply</li><li>- Animal-free production</li></ul> <p>For more information <a href="#">see here</a>.</p> <p>Our RabMAb<sup>®</sup> technology is a patented hybridoma-based technology for making rabbit monoclonal antibodies. For details on our patents, please refer to <a href="#">RabMAb<sup>®</sup> patents</a>.</p> <p>Mouse, Rat: We have preliminary internal testing data to indicate this antibody may not react with these species. Please contact us for more information.</p>

### Properties

<b>Form</b>	Liquid
<b>Storage instructions</b>	Shipped at 4°C. Store at +4°C short term (1-2 weeks). Upon delivery aliquot. Store at -20°C. Avoid freeze / thaw cycle.
<b>Storage buffer</b>	Preservative: 0.01% Sodium azide Constituents: 40% Glycerol, 0.05% BSA, 59% PBS
<b>Purity</b>	Protein A purified

<b>Clonality</b>	Monoclonal
<b>Clone number</b>	EPR8052
<b>Isotype</b>	IgG

## Applications

**The Abpromise guarantee** Our **Abpromise guarantee** covers the use of ab150405 in the following tested applications. The application notes include recommended starting dilutions; optimal dilutions/concentrations should be determined by the end user.

Application	Abreviews	Notes
<b>WB</b>		1/1000 - 1/10000. Detects a band of approximately 62 kDa (predicted molecular weight: 51 kDa).
<b>IHC-P</b>		1/50 - 1/500. Perform heat mediated antigen retrieval before commencing with IHC staining protocol.

**Application notes** Is unsuitable for Flow Cyt or ICC/IF.

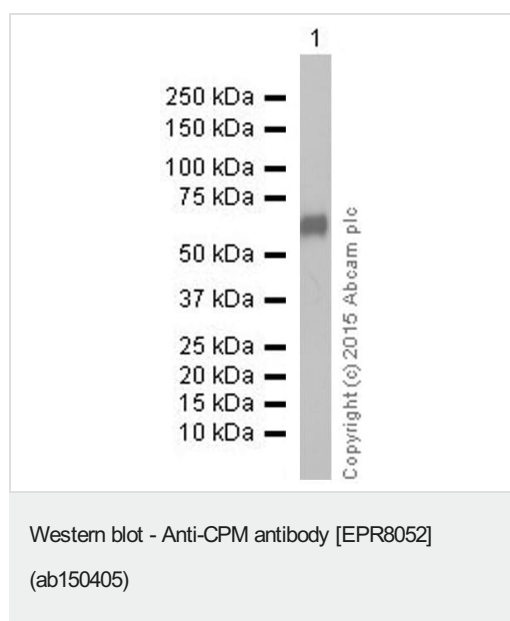
## Target

**Function** Specifically removes C-terminal basic residues (Arg or Lys) from peptides and proteins. It is believed to play important roles in the control of peptide hormone and growth factor activity at the cell surface, and in the membrane-localized degradation of extracellular proteins.

**Sequence similarities** Belongs to the peptidase M14 family.

**Cellular localization** Cell membrane.

## Images



Anti-CPM antibody [EPR8052] (ab150405) at 1/2500 dilution (purified) + Human placenta tissue lysate at 10 µg

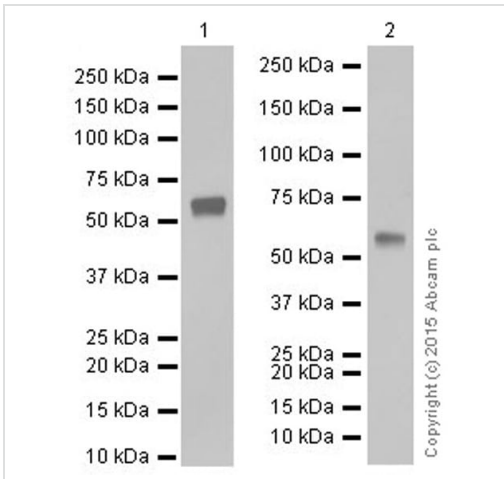
### Secondary

HRP-conjugated goat anti-rabbit IgG, specific to the non-reduced form of IgG at 1/1000 dilution

**Predicted band size:** 51 kDa

**Observed band size:** 62 kDa

Blocking and dilution buffer: 5% NFDM /TBST.



Western blot - Anti-CPM antibody [EPR8052] (ab150405)

**All lanes :** Anti-CPM antibody [EPR8052] (ab150405) at 1/5000 dilution (purified)

**Lane 1 :** Human fetal liver tissue lysate

**Lane 2 :** Human fetal kidney tissue lysate

Lysates/proteins at 10 µg per lane.

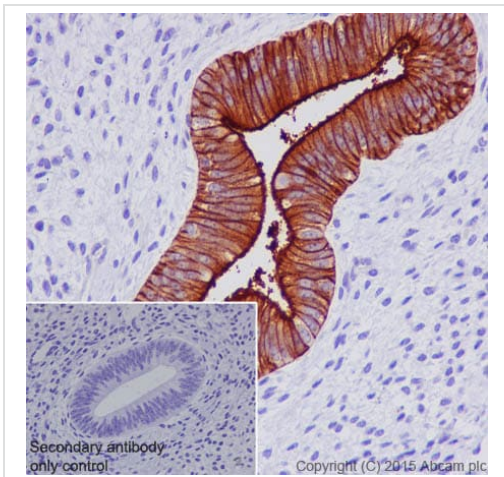
**Secondary**

**All lanes :** HRP-conjugated goat anti-rabbit IgG, specific to the non-reduced form of IgG at 1/1000 dilution

**Predicted band size:** 51 kDa

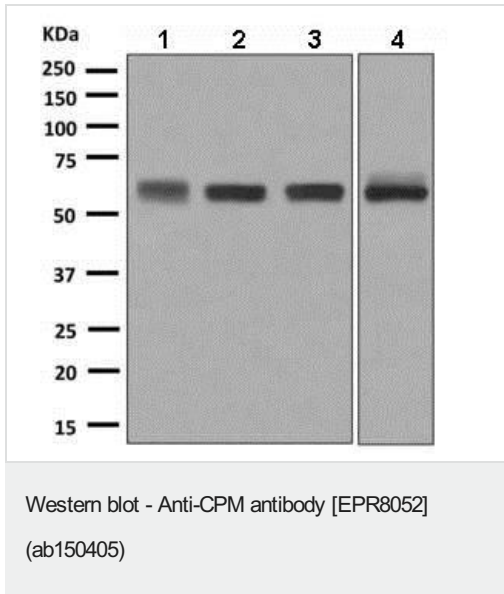
**Observed band size:** 62 kDa

Blocking and dilution buffer: 5% NFDM /TBST.



Immunohistochemistry (Formalin/PFA-fixed paraffin-embedded sections) - Anti-CPM antibody [EPR8052] (ab150405)

Immunohistochemistry (Formalin/PFA-fixed paraffin-embedded sections) analysis of human endometrium tissue labelling CPM with purified ab150405 at 1/500. Heat mediated antigen retrieval was performed using Tris/EDTA buffer pH 9. **ab97051**, a HRP-conjugated goat anti-rabbit IgG (H+L) was used as the secondary antibody (1/500). Negative control using PBS instead of primary antibody. Counterstained with hematoxylin.



**All lanes :** Anti-CPM antibody [EPR8052] (ab150405) at 1/1000 dilution (unpurified)

**Lane 1 :** 293T (Human embryonic kidney epithelial cell) cell lysate

**Lane 2 :** Human fetal kidney tissue lysate

**Lane 3 :** Human fetal liver tissue lysate

**Lane 4 :** Human placenta lysate

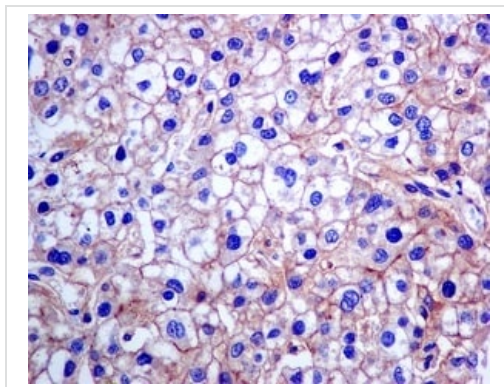
Lysates/proteins at 10 µg per lane.

**Secondary**

**All lanes :** HRP-conjugated goat anti-rabbit IgG at 1/2000 dilution

**Predicted band size:** 51 kDa

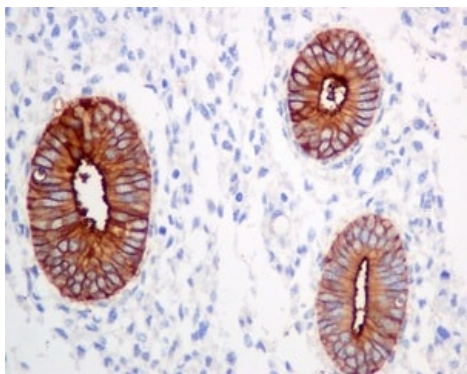
**Observed band size:** 62 kDa



Immunohistochemistry (Formalin/PFA-fixed paraffin-embedded sections) analysis of human hepatocellular carcinoma tissue labelling CPM with unpurified ab150405 at a dilution of 1/50.

Perform heat mediated antigen retrieval before commencing with IHC staining protocol.

Immunohistochemistry (Formalin/PFA-fixed paraffin-embedded sections) - Anti-CPM antibody [EPR8052] (ab150405)



Immunohistochemistry (Formalin/PFA-fixed paraffin-embedded sections) - Anti-CPM antibody [EPR8052] (ab150405)

Immunohistochemistry (Formalin/PFA-fixed paraffin-embedded sections) analysis of human uterus tissue labelling CPM with unpurified ab150405 at a dilution of 1/50.

Perform heat mediated antigen retrieval before commencing with IHC staining protocol.

### Why choose a recombinant antibody?



**Research with confidence**  
Consistent and reproducible results



**Long-term and scalable supply**  
Recombinant technology



**Success from the first experiment**  
Confirmed specificity



**Ethical standards compliant**  
Animal-free production

Anti-CPM antibody [EPR8052] (ab150405)

**Please note:** All products are "FOR RESEARCH USE ONLY. NOT FOR USE IN DIAGNOSTIC PROCEDURES"

### Our Abpromise to you: Quality guaranteed and expert technical support

- Replacement or refund for products not performing as stated on the datasheet
- Valid for 12 months from date of delivery
- Response to your inquiry within 24 hours
- We provide support in Chinese, English, French, German, Japanese and Spanish
- Extensive multi-media technical resources to help you
- We investigate all quality concerns to ensure our products perform to the highest standards

If the product does not perform as described on this datasheet, we will offer a refund or replacement. For full details of the Abpromise, please visit <https://www.abcam.com/abpromise> or contact our technical team.

### **Terms and conditions**

---

- Guarantee only valid for products bought direct from Abcam or one of our authorized distributors