

Product datasheet

Anti-CRB2 antibody ab126373

[5 Images](#)

Overview

Product name	Anti-CRB2 antibody
Description	Rabbit polyclonal to CRB2
Host species	Rabbit
Tested applications	Suitable for: IHC-P
Species reactivity	Reacts with: Human
Immunogen	antigen sequence (RWDDGLRHLV MLSFGPDQLQ DLGQHVHVGG RLLAADSQPW GGPFRCGLQD LRLDGCHLPF FPLPLDNSSQ PSELGGRQSW NLT), corresponding to internal amino acids of Human CRB2 Run BLAST with Expasy Run BLAST with NCBI
Positive control	IHC-P: Human retina, human kidney, human placenta tissue.
General notes	<p>The Life Science industry has been in the grips of a reproducibility crisis for a number of years. Abcam is leading the way in addressing this with our range of recombinant monoclonal antibodies and knockout edited cell lines for gold-standard validation. Please check that this product meets your needs before purchasing.</p> <p>If you have any questions, special requirements or concerns, please send us an inquiry and/or contact our Support team ahead of purchase. Recommended alternatives for this product can be found below, along with publications, customer reviews and Q&As</p>

Properties

Form	Liquid
Storage instructions	Shipped at 4°C. Upon delivery aliquot and store at -20°C. Avoid freeze / thaw cycles.
Storage buffer	pH: 7.20 Preservative: 0.02% Sodium azide Constituents: 59% PBS, 40% Glycerol (glycerin, glycerine)
Purity	Immunogen affinity purified
Clonality	Polyclonal
Isotype	IgG

Applications

The Abpromise guarantee

Our **Abpromise guarantee** covers the use of ab126373 in the following tested applications.

The application notes include recommended starting dilutions; optimal dilutions/concentrations should be determined by the end user.

Application	Abreviews	Notes
IHC-P		1/50 - 1/200. Perform heat mediated antigen retrieval with citrate buffer pH 6 before commencing with IHC staining protocol.

Target

Function

May play a role in polarized cells morphogenesis.

Tissue specificity

Expressed in retina, fetal eye and brain. Also expressed in kidney, ARPE-19 and RPE/choroid cell lines, and at low levels in lung, placenta, and heart.

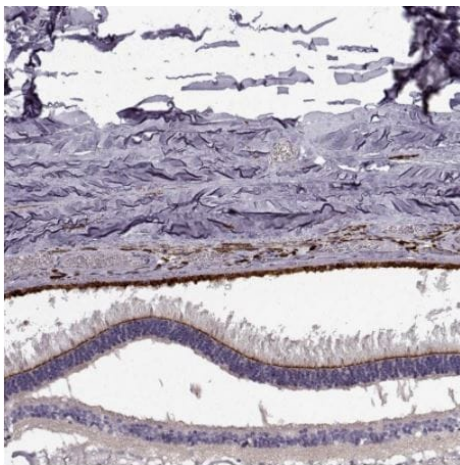
Sequence similarities

Belongs to the Crumbs protein family.
Contains 15 EGF-like domains.
Contains 3 laminin G-like domains.

Cellular localization

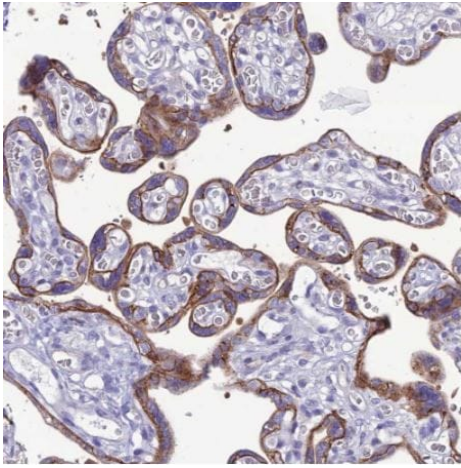
Secreted and Cell membrane.

Images



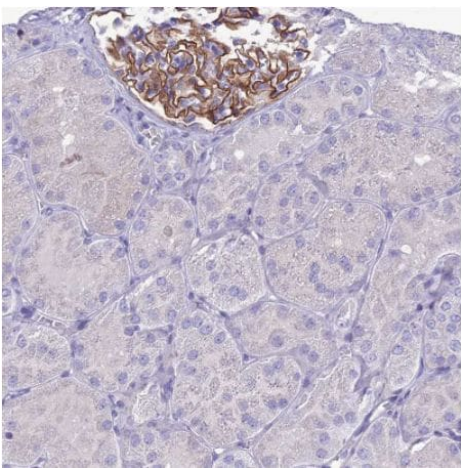
Immunohistochemical analysis of human eye tissue (retina) labelling CRB2 in outer limiting membrane with ab126373 at 1/50 dilution.

Immunohistochemistry (Formalin/PFA-fixed paraffin-embedded sections) - Anti-CRB2 antibody (ab126373)



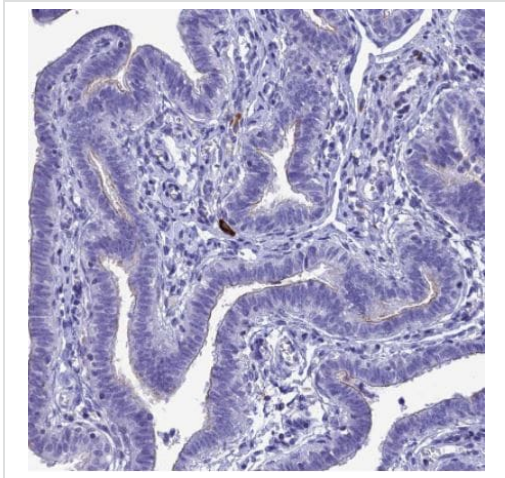
Immunohistochemical analysis of human placenta tissue labelling CRB2 in membrane of trophoblastic cells with ab126373 at 1/50 dilution.

Immunohistochemistry (Formalin/PFA-fixed paraffin-embedded sections) - Anti-CRB2 antibody (ab126373)



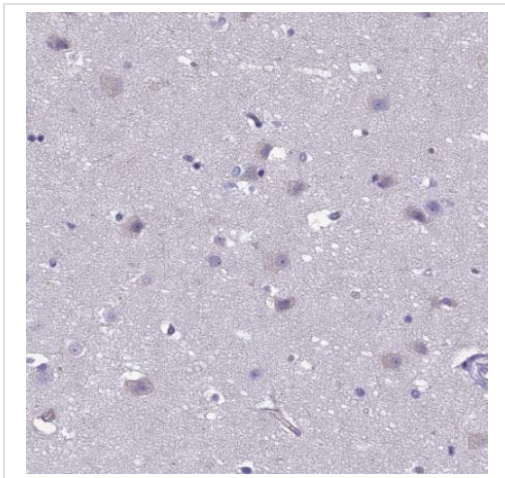
Immunohistochemical analysis of human kidney tissue labelling CRB2 in membrane of cells in glomeruli with ab126373 at 1/50 dilution.

Immunohistochemistry (Formalin/PFA-fixed paraffin-embedded sections) - Anti-CRB2 antibody (ab126373)



Immunohistochemical analysis of human Fallopian tube tissue labelling CRB2 in apical membrane of glandular cells with ab126373 at 1/50 dilution.

Immunohistochemistry (Formalin/PFA-fixed paraffin-embedded sections) - Anti-CRB2 antibody (ab126373)



Immunohistochemical analysis of human cerebral cortex labelling CRB2 in cytoplasm of neuronal cells with ab126373 at 1/50 dilution.

Immunohistochemistry (Formalin/PFA-fixed paraffin-embedded sections) - Anti-CRB2 antibody (ab126373)

Please note: All products are "FOR RESEARCH USE ONLY. NOT FOR USE IN DIAGNOSTIC PROCEDURES"

Our Promise to you: Quality guaranteed and expert technical support

- Replacement or refund for products not performing as stated on the datasheet
- Valid for 12 months from date of delivery
- Response to your inquiry within 24 hours

- We provide support in Chinese, English, French, German, Japanese and Spanish
- Extensive multi-media technical resources to help you
- We investigate all quality concerns to ensure our products perform to the highest standards

If the product does not perform as described on this datasheet, we will offer a refund or replacement. For full details of the Abpromise, please visit <https://www.abcam.com/abpromise> or contact our technical team.

Terms and conditions

- Guarantee only valid for products bought direct from Abcam or one of our authorized distributors