




Product datasheet

Anti-Creatine kinase B type antibody [CK-BYK/21E10] ab125114

KO VALIDATED

[4 References](#) [1 Image](#)

Overview

Product name	Anti-Creatine kinase B type antibody [CK-BYK/21E10]
Description	Mouse monoclonal [CK-BYK/21E10] to Creatine kinase B type
Host species	Mouse
Tested applications	Suitable for: WB
Species reactivity	Reacts with: Mouse, Human Predicted to work with: Rat, Rabbit, Cow, Dog 
Immunogen	Synthetic peptide: SNSHNALKLRFPAEDEF , corresponding to N terminal amino acids 4-20 of Human Creatine kinase B type.  Run BLAST with  Run BLAST with
Positive control	Human Purkinje cells.
General notes	<p>The Life Science industry has been in the grips of a reproducibility crisis for a number of years. Abcam is leading the way in addressing this with our range of recombinant monoclonal antibodies and knockout edited cell lines for gold-standard validation. Please check that this product meets your needs before purchasing.</p> <p>If you have any questions, special requirements or concerns, please send us an inquiry and/or contact our Support team ahead of purchase. Recommended alternatives for this product can be found below, along with publications, customer reviews and Q&As</p>

Properties

Form	Liquid
Storage instructions	Shipped at 4°C. Upon delivery aliquot and store at -20°C. Avoid freeze / thaw cycles.
Storage buffer	Preservative: 0.02% Sodium azide Constituents: 99% PBS, 0.1% BSA
Purity	Protein G purified
Clonality	Monoclonal

Clone number CK-BYK/21E10

Isotype IgG2b

Applications

The Abpromise guarantee Our **Abpromise guarantee** covers the use of ab125114 in the following tested applications. The application notes include recommended starting dilutions; optimal dilutions/concentrations should be determined by the end user.

Application	Abreviews	Notes
WB		1/50. Detects a band of approximately 43-46 kDa (predicted molecular weight: 43 kDa).

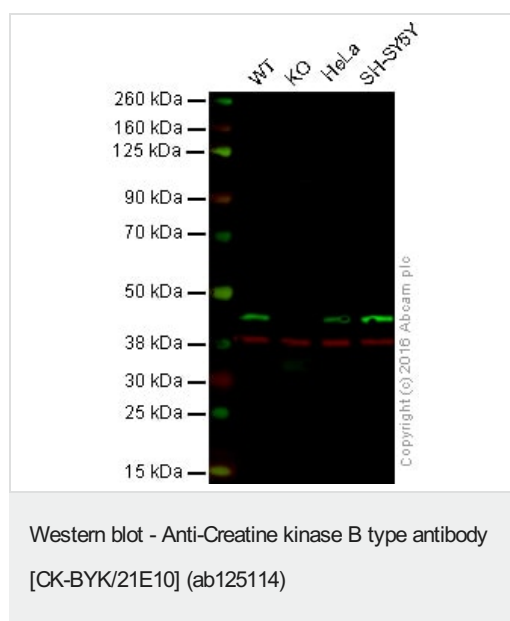
Target

Function Reversibly catalyzes the transfer of phosphate between ATP and various phosphogens (e.g. creatine phosphate). Creatine kinase isoenzymes play a central role in energy transduction in tissues with large, fluctuating energy demands, such as skeletal muscle, heart, brain and spermatozoa.

Sequence similarities Belongs to the ATP:guanido phosphotransferase family. Contains 1 phosphagen kinase C-terminal domain. Contains 1 phosphagen kinase N-terminal domain.

Cellular localization Cytoplasm.

Images



Lane 1: Wild-type HAP1 cell lysate (20 µg)

Lane 2: Creatine kinase B knockout HAP1 cell lysate (20 µg)

Lane 3: HeLa cell lysate (20 µg)

Lane 4: SH-SY5Y cell lysate (20 µg)

Lanes 1 - 4: Merged signal (red and green). Green - ab125114 observed at 45 kDa. Red - loading control, **ab181602**, observed at 37 kDa.

ab125114 was shown to recognize Creatine kinase B when Creatine kinase B knockout samples were used, along with additional cross-reactive bands. Wild-type and Creatine kinase B knockout samples were subjected to SDS-PAGE. ab125114 and **ab181602** (loading control to GAPDH) were diluted 1/50 and 1/10000 respectively and incubated overnight at 4°C. Blots were developed with Goat anti-Mouse IgG H&L (IRDye® 800CW) preadsorbed (**ab216772**) and Goat Anti-Rabbit IgG H&L (IRDye® 680RD) preadsorbed (**ab216777**) secondary antibodies at 1/10000 dilution for 1 hour at room temperature before imaging.

Please note: All products are "FOR RESEARCH USE ONLY. NOT FOR USE IN DIAGNOSTIC PROCEDURES"

Our Abpromise to you: Quality guaranteed and expert technical support

- Replacement or refund for products not performing as stated on the datasheet
- Valid for 12 months from date of delivery
- Response to your inquiry within 24 hours

- We provide support in Chinese, English, French, German, Japanese and Spanish
- Extensive multi-media technical resources to help you
- We investigate all quality concerns to ensure our products perform to the highest standards

If the product does not perform as described on this datasheet, we will offer a refund or replacement. For full details of the Abpromise, please visit <https://www.abcam.com/abpromise> or contact our technical team.

Terms and conditions

- Guarantee only valid for products bought direct from Abcam or one of our authorized distributors