

Anti-Creatine Kinase MM antibody [ZM-1] ab170173

2 Images

Overview

Product name	Anti-Creatine Kinase MM antibody [ZM-1]
Description	Mouse monoclonal [ZM-1] to Creatine Kinase MM
Host species	Mouse
Tested applications	Suitable for: IP, WB
Species reactivity	Reacts with: Zebrafish Does not react with: Mouse, Rat, Cow, Human
Immunogen	Full length native protein (purified). This information is proprietary to Abcam and/or its suppliers.
Positive control	Zebrafish Skeletal Muscle Homogenate.
General notes	<p>This antibody clone is manufactured by Abcam. If you require a custom buffer formulation or conjugation for your experiments, please contact orders@abcam.com.</p> <p>The Life Science industry has been in the grips of a reproducibility crisis for a number of years. Abcam is leading the way in addressing this with our range of recombinant monoclonal antibodies and knockout edited cell lines for gold-standard validation. Please check that this product meets your needs before purchasing.</p> <p>If you have any questions, special requirements or concerns, please send us an inquiry and/or contact our Support team ahead of purchase. Recommended alternatives for this product can be found below, along with publications, customer reviews and Q&As</p> <p>Product was previously marketed under the MitoSciences sub-brand.</p>

Properties

Form	Liquid
Storage instructions	Shipped at 4°C. Store at +4°C short term (1-2 weeks). Upon delivery aliquot. Store at -20°C long term. Avoid freeze / thaw cycle.
Storage buffer	pH: 7.5 Preservative: 0.02% Sodium azide Constituent: 99% HEPES buffered saline
Purity	SDS-PAGE
Clonality	Monoclonal
Clone number	ZM-1

Isotype	IgG1
Light chain type	kappa

Applications

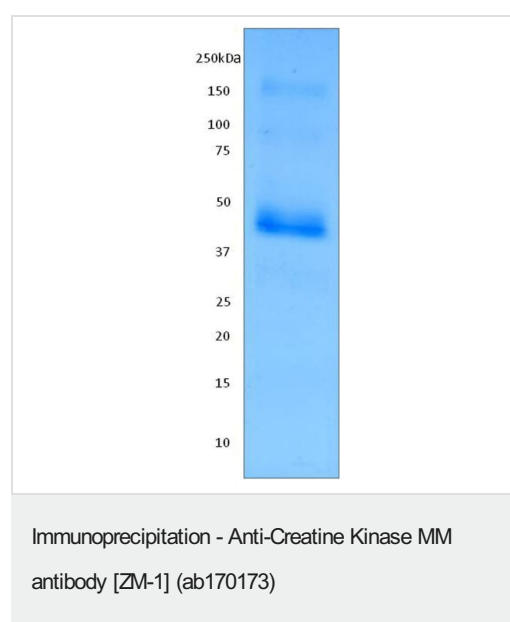
The Abpromise guarantee Our **Abpromise guarantee** covers the use of ab170173 in the following tested applications. The application notes include recommended starting dilutions; optimal dilutions/concentrations should be determined by the end user.

Application	Abreviews	Notes
IP		Use at an assay dependent concentration.
WB		Use a concentration of 1 µg/ml. Predicted molecular weight: 43 kDa.

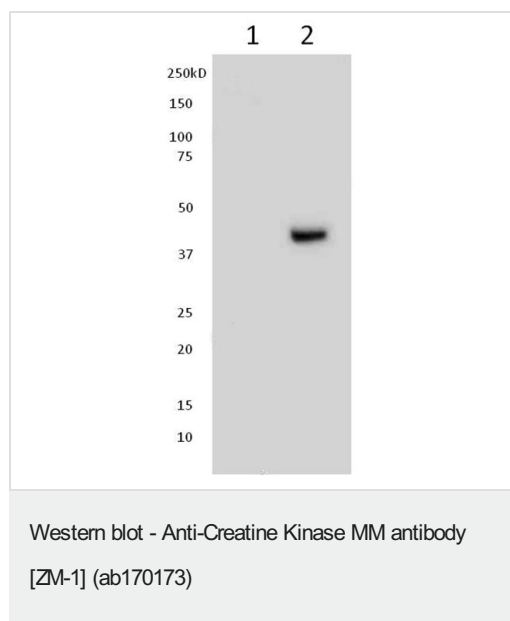
Target

Function	Reversibly catalyzes the transfer of phosphate between ATP and various phosphagens (e.g. creatine phosphate). Creatine kinase isoenzymes play a central role in energy transduction in tissues with large, fluctuating energy demands, such as skeletal muscle, heart, brain and spermatozoa.
Sequence similarities	Belongs to the ATP:guanido phosphotransferase family. Contains 1 phosphagen kinase C-terminal domain. Contains 1 phosphagen kinase N-terminal domain.
Cellular localization	Cytoplasm.

Images



Immunoprecipitation for Creatine Kinase MM (ZM-1) antibody.
ab170173 conjugated to Protein-G-Beads, used at 20 µg antibody per 10 µL of beads. Immunoprecipitated from 1 mg Zebrafish Skeletal Muscle Homogenate Lysate. 25 µL eluate was loaded onto the gel.
Stained with Colloidal Coomassie Blue



All lanes : Anti-Creatine Kinase MM antibody [ZM-1] (ab170173) at 0.5 µg/ml

Lane 1 : ZBH (Zebrafish Brain Homogenate) Lysate

Lane 2 : (Zebrafish Skeletal Muscle Homogenate) Lysate

Lysates/proteins at 15 µg per lane.

Secondary

All lanes : Goat polyclonal to Mouse IgG –HRP at 1/2000 dilution

Predicted band size: 43 kDa

Please note: All products are "FOR RESEARCH USE ONLY. NOT FOR USE IN DIAGNOSTIC PROCEDURES"

Our Abpromise to you: Quality guaranteed and expert technical support

- Replacement or refund for products not performing as stated on the datasheet
- Valid for 12 months from date of delivery
- Response to your inquiry within 24 hours
- We provide support in Chinese, English, French, German, Japanese and Spanish
- Extensive multi-media technical resources to help you
- We investigate all quality concerns to ensure our products perform to the highest standards

If the product does not perform as described on this datasheet, we will offer a refund or replacement. For full details of the Abpromise, please visit <https://www.abcam.com/abpromise> or contact our technical team.

Terms and conditions

- Guarantee only valid for products bought direct from Abcam or one of our authorized distributors