

## Product datasheet

# Anti-CREG1/CREG antibody ab233282

5 Images

### Overview

---

<b>Product name</b>	Anti-CREG1/CREG antibody
<b>Description</b>	Rabbit polyclonal to CREG1/CREG
<b>Host species</b>	Rabbit
<b>Tested applications</b>	<b>Suitable for:</b> IHC-P, WB
<b>Species reactivity</b>	<b>Reacts with:</b> Mouse
<b>Immunogen</b>	Recombinant fragment (His-T7-tag) corresponding to Mouse CREG1/CREG aa 50 to the C-terminus. Two N-terminal tags. Expressed in E.coli. Database link: <a href="#">O88668</a>

 [Run BLAST with](#)

 [Run BLAST with](#)

<b>Positive control</b>	WB: Recombinant mouse CREG1/CREG protein; Mouse lung and ear lysates. IHC-P: Mouse stomach and kidney tissue.
-------------------------	---

**General notes**

The Life Science industry has been in the grips of a reproducibility crisis for a number of years. Abcam is leading the way in addressing this with our range of recombinant monoclonal antibodies and knockout edited cell lines for gold-standard validation. Please check that this product meets your needs before purchasing.

If you have any questions, special requirements or concerns, please send us an inquiry and/or contact our Support team ahead of purchase. Recommended alternatives for this product can be found below, along with publications, customer reviews and Q&As

### Properties

---

<b>Form</b>	Liquid
<b>Storage instructions</b>	Shipped at 4°C. Store at +4°C short term (1-2 weeks). Upon delivery aliquot. Store at -20°C long term. Avoid freeze / thaw cycle.
<b>Storage buffer</b>	pH: 7.40 Preservative: 0.02% Sodium azide Constituents: 44.12% PBS, 55.77% Glycerol (glycerin, glycerine)
<b>Purity</b>	Immunogen affinity purified
<b>Purification notes</b>	Antigen-specific affinity chromatography followed by Protein A affinity chromatography.
<b>Clonality</b>	Polyclonal
<b>Isotype</b>	IgG

## Applications

**The Abpromise guarantee** Our **Abpromise guarantee** covers the use of ab233282 in the following tested applications. The application notes include recommended starting dilutions; optimal dilutions/concentrations should be determined by the end user.

Application	Abreviews	Notes
IHC-P		Use a concentration of 5 - 20 µg/ml.
WB		Use a concentration of 0.2 - 2 µg/ml. Predicted molecular weight: 24 kDa.

## Target

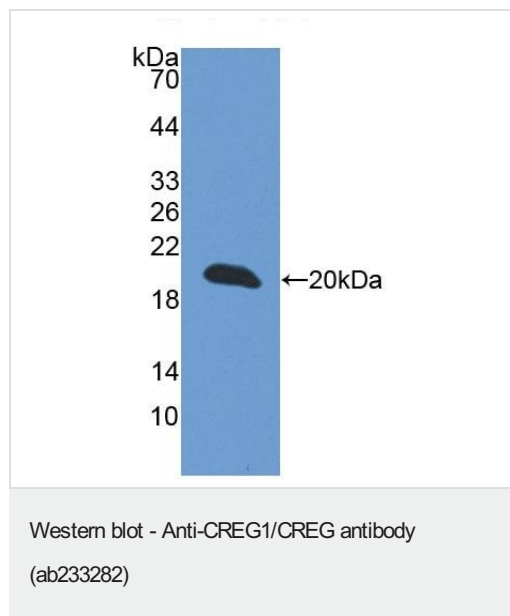
**Function** May contribute to the transcriptional control of cell growth and differentiation. Antagonizes transcriptional activation and cellular transformation by the adenovirus E1A protein. The transcriptional control activity of cell growth requires interaction with IGF2R.

**Sequence similarities** Belongs to the CREG family.

**Post-translational modifications** N-glycosylated.

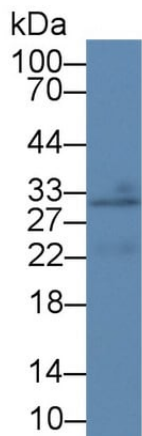
**Cellular localization** Secreted.

## Images



Anti-CREG1/CREG antibody (ab233282) at 2 µg/ml +  
Recombinant mouse CREG1/CREG protein

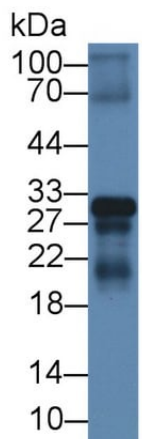
**Predicted band size:** 24 kDa



Western blot - Anti-CREG1/CREG antibody  
(ab233282)

Anti-CREG1/CREG antibody (ab233282) at 2  $\mu$ g/ml + Mouse lung tissue lysate

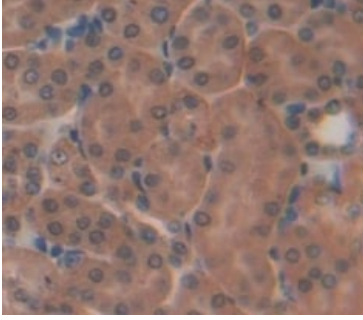
**Predicted band size:** 24 kDa



Western blot - Anti-CREG1/CREG antibody  
(ab233282)

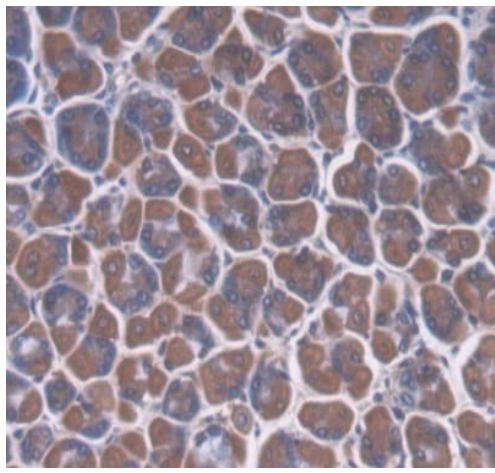
Anti-CREG1/CREG antibody (ab233282) at 1  $\mu$ g + Mouse ear tissue lysate

**Predicted band size:** 24 kDa



Formalin-fixed, paraffin-embedded mouse kidney tissue stained for CREG1/CREG using ab233282 at 20 µg/ml in immunohistochemical analysis. DAB staining.

Immunohistochemistry (Formalin/PFA-fixed paraffin-embedded sections) - Anti-CREG1/CREG antibody (ab233282)



Formalin-fixed, paraffin-embedded mouse stomach tissue stained for CREG1/CREG using ab233282 at 20 µg/ml in immunohistochemical analysis. DAB staining.

Immunohistochemistry (Formalin/PFA-fixed paraffin-embedded sections) - Anti-CREG1/CREG antibody (ab233282)

**Please note:** All products are "FOR RESEARCH USE ONLY. NOT FOR USE IN DIAGNOSTIC PROCEDURES"

### Our Abpromise to you: Quality guaranteed and expert technical support

---

- Replacement or refund for products not performing as stated on the datasheet
- Valid for 12 months from date of delivery
- Response to your inquiry within 24 hours
  
- We provide support in Chinese, English, French, German, Japanese and Spanish
- Extensive multi-media technical resources to help you
- We investigate all quality concerns to ensure our products perform to the highest standards

If the product does not perform as described on this datasheet, we will offer a refund or replacement. For full details of the Abpromise, please visit <https://www.abcam.com/abpromise> or contact our technical team.

### Terms and conditions

---

- Guarantee only valid for products bought direct from Abcam or one of our authorized distributors