


## Product datasheet

### Anti-CRF1/CRHR1 antibody ab77686

[5 References](#) [3 Images](#)

#### Overview

|                            |   |
|----------------------------|---|
| <b>Product name</b>        | Anti-CRF1/CRHR1 antibody  |
| <b>Description</b>         | Goat polyclonal to CRF1/CRHR1   |
| <b>Host species</b>        | Goat  |
| <b>Tested applications</b> | <b>Suitable for:</b> WB, ICC/IF   |
| <b>Species reactivity</b>  | <b>Reacts with:</b> Mouse, Rat, Human<br><b>Predicted to work with:</b> Rhesus monkey  |
| <b>Immunogen</b>           | Synthetic peptide corresponding to Human CRF1/CRHR1 aa 107-117 (internal sequence).<br>Sequence:<br>C-NEEKKSKVHYH   |

Database link: [NP\\_004373.2](#)

 [Run BLAST with](#)

 [Run BLAST with](#)

#### General notes

The Life Science industry has been in the grips of a reproducibility crisis for a number of years. Abcam is leading the way in addressing this with our range of recombinant monoclonal antibodies and knockout edited cell lines for gold-standard validation. Please check that this product meets your needs before purchasing.

If you have any questions, special requirements or concerns, please send us an inquiry and/or contact our Support team ahead of purchase. Recommended alternatives for this product can be found below, along with publications, customer reviews and Q&As

#### Properties

|                             |   |
|-----------------------------|---|
| <b>Form</b>                 | Liquid  |
| <b>Storage instructions</b> | Shipped at 4°C. Upon delivery aliquot and store at -20°C. Avoid repeated freeze / thaw cycles.  |
| <b>Storage buffer</b>       | pH: 7.30<br>Preservative: 0.02% Sodium azide<br>Constituents: 0.5% BSA, 99% Tris buffered saline  |
| <b>Purity</b>               | Immunogen affinity purified   |
| <b>Purification notes</b>   | ab77686 was purified from goat serum by ammonium sulphate precipitation followed by antigen affinity chromatography using the immunizing peptide. |
| <b>Clonality</b>            | Polyclonal  |

Isotype

IgG

## Applications

### The Abpromise guarantee

Our **Abpromise guarantee** covers the use of ab77686 in the following tested applications.

The application notes include recommended starting dilutions; optimal dilutions/concentrations should be determined by the end user.

| Application | Abreviews | Notes   |
|-------------|-----------|---|
| WB          |           | Use a concentration of 0.1 - 0.3 µg/ml. Detects a band of approximately 60 kDa (predicted molecular weight: 48 kDa). 1 hour primary incubation is recommended for this product. |
| ICC/IF      |           | Use a concentration of 0.3 µg/ml.   |

## Target

### Function

This is a receptor for corticotropin releasing factor. Shows high-affinity CRF binding. The activity of this receptor is mediated by G proteins which activate adenylyl cyclase.

### Tissue specificity

Predominantly expressed in the cerebellum, pituitary, cerebral cortex and olfactory lobe.

### Sequence similarities

Belongs to the G-protein coupled receptor 2 family.

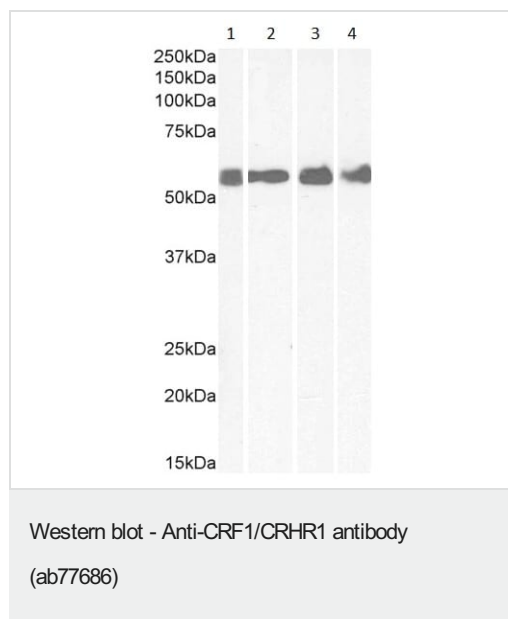
### Post-translational modifications

C-terminal Ser or Thr residues may be phosphorylated.

### Cellular localization

Cell membrane.

## Images



**All lanes :** Anti-CRF1/CRHR1 antibody (ab77686) at 1 µg/ml

**Lane 1 :** Human colon tissue lysate in RIPA buffer

**Lane 2 :** Human cerebellum tissue lysate in RIPA buffer

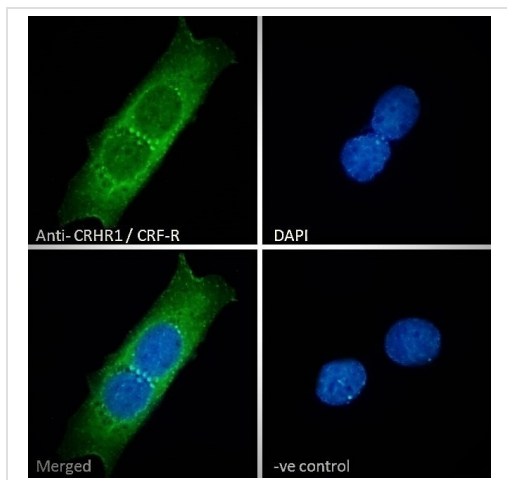
**Lane 3 :** Rat brain tissue lysate in RIPA buffer

**Lane 4 :** Mouse spinal cord tissue lysate in RIPA buffer

Lysates/proteins at 35 µg per lane.

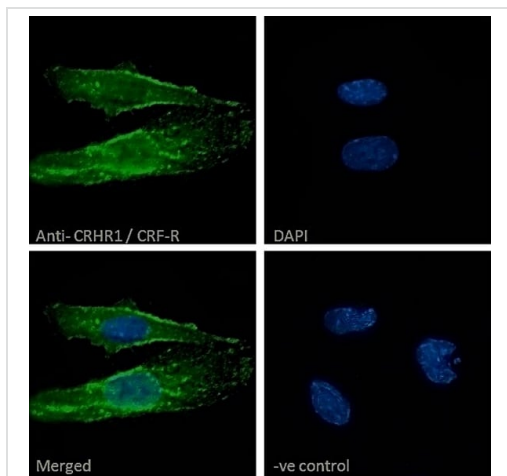
**Predicted band size:** 48 kDa

Incubated with the primary antibody for 1 hour. Detected by chemiluminescence.



Immunocytochemistry/ Immunofluorescence - Anti-CRF1/CRHR1 antibody (ab77686)

Immunocytochemistry/immunofluorescence analysis of MCF7 cells labelling CRF1 with ab77686 at 10µg/mL. Cells were fixed with 4% paraformaldehyde and permeabilized with 0.15% Triton X-100. Anti-goat Alexa Fluor® 488 antibody was used as the secondary antibody (green) showing cytoplasmic, and vesicle staining. Nuclear DNA was labelled with DAPI (blue). Negative control: Unimmunized goat IgG (10µg/mL) followed by Alexa Fluor® 488 secondary antibody (2µg/mL).



Immunocytochemistry/ Immunofluorescence - Anti-CRF1/CRHR1 antibody (ab77686)

Immunocytochemistry/immunofluorescence analysis of Neuro2a cells labelling CRF1 with ab77686 at 10µg/mL. Cells were fixed with 4% paraformaldehyde and permeabilized with 0.15% Triton X-100. Anti-goat Alexa Fluor® 488 antibody at 2ug/ml was used as the secondary antibody (green) showing plasma membrane, and vesicle staining. Nuclear DNA was labelled with DAPI (blue). Negative control: Unimmunized goat IgG (10ug/ml) followed by Alexa Fluor® 488 secondary antibody (2ug/ml).

**Please note:** All products are "FOR RESEARCH USE ONLY. NOT FOR USE IN DIAGNOSTIC PROCEDURES"

### Our Abpromise to you: Quality guaranteed and expert technical support

- Replacement or refund for products not performing as stated on the datasheet
- Valid for 12 months from date of delivery
- Response to your inquiry within 24 hours
- We provide support in Chinese, English, French, German, Japanese and Spanish
- Extensive multi-media technical resources to help you
- We investigate all quality concerns to ensure our products perform to the highest standards

If the product does not perform as described on this datasheet, we will offer a refund or replacement. For full details of the Abpromise, please visit <https://www.abcam.com/abpromise> or contact our technical team.

## Terms and conditions

---

- Guarantee only valid for products bought direct from Abcam or one of our authorized distributors