


Anti-CrkL antibody ab151791

[4 References](#) [4 Images](#)

Overview

Product name	Anti-CrkL antibody
Description	Rabbit polyclonal to CrkL
Host species	Rabbit
Tested applications	Suitable for: WB, IHC-P, ICC/IF
Species reactivity	Reacts with: Mouse, Human Predicted to work with: Rat, <i>Xenopus laevis</i> 
Immunogen	Recombinant fragment, corresponding to a region within amino acids 1-282 of Human CrkL.
Positive control	293T, A431, H1299, HeLa S3, HepG2, Molt-4, Raji and Mouse brain whole cell lysates; HeLa cells; Human SW480 xenograft.
General notes	<p>The Life Science industry has been in the grips of a reproducibility crisis for a number of years. Abcam is leading the way in addressing this with our range of recombinant monoclonal antibodies and knockout edited cell lines for gold-standard validation. Please check that this product meets your needs before purchasing.</p> <p>If you have any questions, special requirements or concerns, please send us an inquiry and/or contact our Support team ahead of purchase. Recommended alternatives for this product can be found below, along with publications, customer reviews and Q&As</p>

Properties

Form	Liquid
Storage instructions	Shipped at 4°C. Upon delivery aliquot. Store at -20°C or -80°C. Avoid freeze / thaw cycle.
Storage buffer	pH: 7.00 Preservative: 0.025% Proclin 300 Constituents: 78% PBS, 1% BSA, 20% Glycerol (glycerin, glycerine)
Purity	Immunogen affinity purified
Clonality	Polyclonal
Isotype	IgG

Applications

The Abpromise guarantee

Our **Abpromise guarantee** covers the use of ab151791 in the following tested applications.

The application notes include recommended starting dilutions; optimal dilutions/concentrations should be determined by the end user.

Application	Abreviews	Notes
WB		1/500 - 1/3000. Predicted molecular weight: 34 kDa.
IHC-P		1/100 - 1/1000. Perform heat mediated antigen retrieval before commencing with IHC staining protocol using 10mM Citrate buffer (pH6.0) or Tris-EDTA buffer (pH8.0).
ICC/IF		1/100 - 1/1000.

Target

Function

May mediate the transduction of intracellular signals.

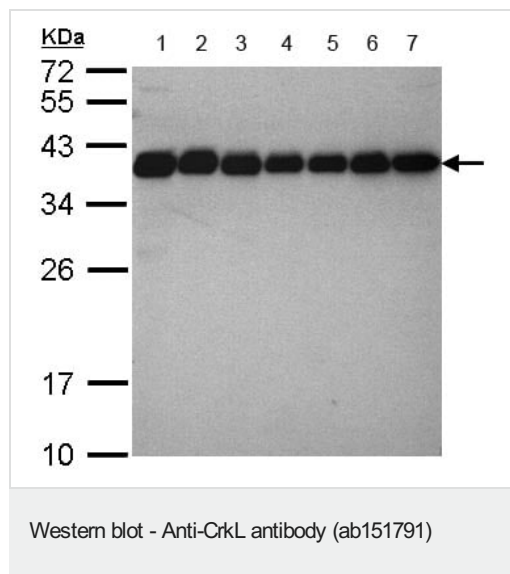
Sequence similarities

Belongs to the CRK family.

Contains 1 SH2 domain.

Contains 2 SH3 domains.

Images



All lanes : Anti-CrkL antibody (ab151791) at 1/1000 dilution

Lane 1 : 293T whole cell lysate

Lane 2 : A431 whole cell lysate

Lane 3 : H1299 whole cell lysate

Lane 4 : HeLaS3 whole cell lysate

Lane 5 : HepG2 whole cell lysate

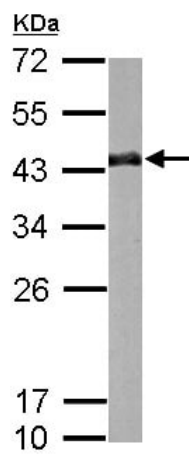
Lane 6 : Molt-4 whole cell lysate

Lane 7 : Raji whole cell lysate

Lysates/proteins at 30 µg per lane.

Predicted band size: 34 kDa

12% SDS PAGE

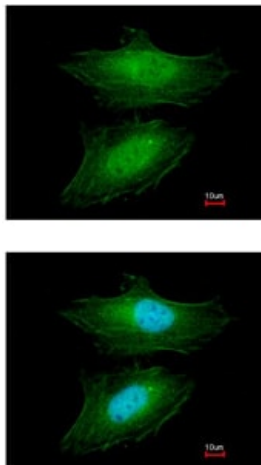


Western blot - Anti-CrkL antibody (ab151791)

Anti-CrkL antibody (ab151791) at 1/1000 dilution + Mouse brain whole cell lysate at 50 μ g

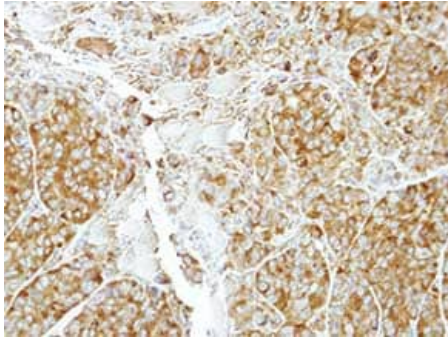
Predicted band size: 34 kDa

12% SDS PAGE



Immunocytochemistry/ Immunofluorescence - Anti-CrkL antibody (ab151791)

Immunofluorescent analysis of paraformaldehyde-fixed HeLa cells labeling CrkL with ab151791 at 1/200 dilution.



Immunohistochemical analysis of paraffin-embedded SW480 xenograft labeling CrkL with ab151791 at 1/500 dilution.

Immunohistochemistry (Formalin/PFA-fixed paraffin-embedded sections) - Anti-CrkL antibody (ab151791)

Please note: All products are "FOR RESEARCH USE ONLY. NOT FOR USE IN DIAGNOSTIC PROCEDURES"

Our Abpromise to you: Quality guaranteed and expert technical support

- Replacement or refund for products not performing as stated on the datasheet
- Valid for 12 months from date of delivery
- Response to your inquiry within 24 hours
- We provide support in Chinese, English, French, German, Japanese and Spanish
- Extensive multi-media technical resources to help you
- We investigate all quality concerns to ensure our products perform to the highest standards

If the product does not perform as described on this datasheet, we will offer a refund or replacement. For full details of the Abpromise, please visit <https://www.abcam.com/abpromise> or contact our technical team.

Terms and conditions

- Guarantee only valid for products bought direct from Abcam or one of our authorized distributors