


Product datasheet

Anti-CRMP1 antibody [EPR14520(B)] - N-terminal ab180517

Recombinant RabMAb

★☆☆☆☆ [1 Abreviews](#) [4 Images](#)

Overview

Product name	Anti-CRMP1 antibody [EPR14520(B)] - N-terminal
Description	Rabbit monoclonal [EPR14520(B)] to CRMP1 - N-terminal
Host species	Rabbit
Tested applications	Suitable for: WB, IHC-P
Species reactivity	Reacts with: Human Predicted to work with: Mouse, Rat 
Immunogen	Synthetic peptide within Human CRMP1 aa 50-150 (N terminal). The exact sequence is proprietary. Database link: Q14194
Positive control	Human cerebellum lysate, Fetal brain lysate, SH-SY5Y cell lysate, Paraffin-embedded Human brain sections.
General notes	This product is a recombinant monoclonal antibody, which offers several advantages including: <ul style="list-style-type: none">- High batch-to-batch consistency and reproducibility- Improved sensitivity and specificity- Long-term security of supply- Animal-free production For more information see here . Our RabMAb [®] technology is a patented hybridoma-based technology for making rabbit monoclonal antibodies. For details on our patents, please refer to RabMAb[®] patents .

Properties

Form	Liquid
Storage instructions	Shipped at 4°C. Store at +4°C short term (1-2 weeks). Upon delivery aliquot. Store at -20°C long term. Avoid freeze / thaw cycle.
Storage buffer	Preservative: 0.01% Sodium azide Constituents: 59% PBS, 40% Glycerol (glycerin, glycerine), 0.05% BSA
Purity	Tissue culture supernatant

Clonality	Monoclonal
Clone number	EPR14520(B)
Isotype	IgG

Applications

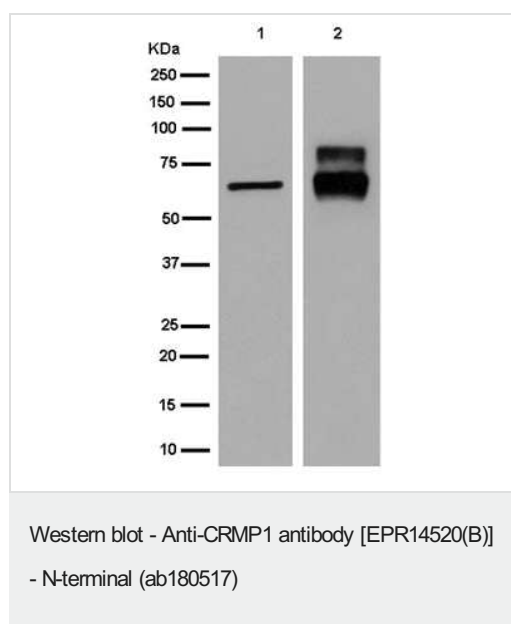
The Abpromise guarantee Our **Abpromise guarantee** covers the use of ab180517 in the following tested applications. The application notes include recommended starting dilutions; optimal dilutions/concentrations should be determined by the end user.

Application	Abreviews	Notes
WB		1/1000 - 1/10000. Predicted molecular weight: 62 kDa.
IHC-P		1/250 - 1/500. Perform heat mediated antigen retrieval with Tris/EDTA buffer pH 9.0 before commencing with IHC staining protocol.

Target

Function	Necessary for signaling by class 3 semaphorins and subsequent remodeling of the cytoskeleton. Plays a role in axon guidance, invasive growth and cell migration.
Tissue specificity	Brain.
Sequence similarities	Belongs to the DHOase family. Hydantoinase/dihydropyrimidinase subfamily.
Cellular localization	Cytoplasm. Cytoplasm > cytoskeleton > centrosome. Cytoplasm > cytoskeleton > spindle. Associated with centrosomes and the mitotic spindle during metaphase.

Images



All lanes : Anti-CRMP1 antibody [EPR14520(B)] - N-terminal (ab180517) at 1/20000 dilution

Lane 1 : SH-SY5Y cell lysate

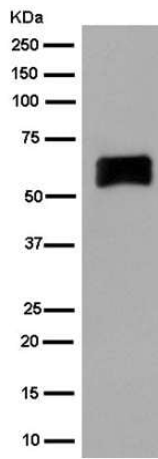
Lane 2 : Fetal brain tissue lysate

Lysates/proteins at 20 µg per lane.

Secondary

All lanes : Goat Anti-Rabbit IgG H&L (HRP) (**ab136636**) at 1/500 dilution

Predicted band size: 62 kDa



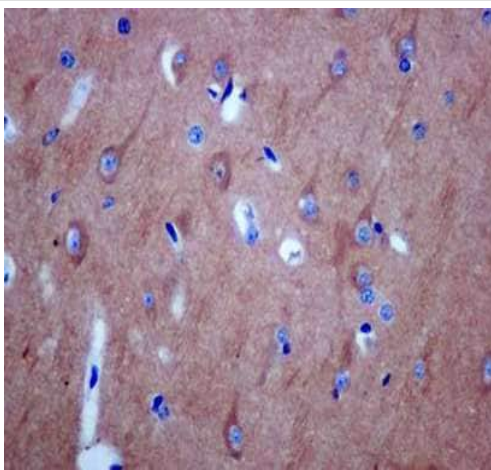
Western blot - Anti-CRMP1 antibody [EPR14520(B)]
- N-terminal (ab180517)

Anti-CRMP1 antibody [EPR14520(B)] - N-terminal (ab180517) at
1/5000 dilution + Human cerebellum lysate at 20 μ g

Secondary

Goat Anti-Rabbit IgG H&L (HRP) ([ab136636](#)) at 1/500 dilution

Predicted band size: 62 kDa



Immunohistochemistry (Formalin/PFA-fixed paraffin-
embedded sections) - Anti-CRMP1 antibody
[EPR14520(B)] - N-terminal (ab180517)

Immunohistochemical analysis of paraffin-embedded Human brain
tissue labeling CRMP1 with ab180517 at 1/500 dilution. Anti-rabbit
HRP secondary antibody was used and counterstaining with
Hematoxylin was performed.

Perform heat mediated antigen retrieval with EDTA buffer pH 9
before commencing with IHC staining protocol.

Why choose a recombinant antibody?



Research with confidence
Consistent and reproducible results



Long-term and scalable supply
Recombinant technology



Success from the first experiment
Confirmed specificity



Ethical standards compliant
Animal-free production

Anti-CRMP1 antibody [EPR14520(B)] - N-terminal
(ab180517)

Please note: All products are "FOR RESEARCH USE ONLY. NOT FOR USE IN DIAGNOSTIC PROCEDURES"

Our Abpromise to you: Quality guaranteed and expert technical support

- Replacement or refund for products not performing as stated on the datasheet
- Valid for 12 months from date of delivery
- Response to your inquiry within 24 hours
- We provide support in Chinese, English, French, German, Japanese and Spanish
- Extensive multi-media technical resources to help you
- We investigate all quality concerns to ensure our products perform to the highest standards

If the product does not perform as described on this datasheet, we will offer a refund or replacement. For full details of the Abpromise, please visit <https://www.abcam.com/abpromise> or contact our technical team.

Terms and conditions

- Guarantee only valid for products bought direct from Abcam or one of our authorized distributors