


Product datasheet

Anti-CRMP2 antibody [1B1] ab62539

[3 References](#) [2 Images](#)

Overview

Product name	Anti-CRMP2 antibody [1B1]
Description	Mouse monoclonal [1B1] to CRMP2
Host species	Mouse
Specificity	Does not react with CRMP-1, CRMP-3, CRMP-4 or CRMP-5.
Tested applications	Suitable for: Flow Cyt, WB
Species reactivity	Reacts with: Human Predicted to work with: Mouse 
Immunogen	Synthetic peptide corresponding to Human CRMP2 (C terminal). A 15 residue peptide from C-terminal domain.
General notes	<p>The Life Science industry has been in the grips of a reproducibility crisis for a number of years. Abcam is leading the way in addressing this with our range of recombinant monoclonal antibodies and knockout edited cell lines for gold-standard validation. Please check that this product meets your needs before purchasing.</p> <p>If you have any questions, special requirements or concerns, please send us an inquiry and/or contact our Support team ahead of purchase. Recommended alternatives for this product can be found below, along with publications, customer reviews and Q&As</p>

Properties

Form	Liquid
Storage instructions	Shipped at 4°C. Store at +4°C short term (1-2 weeks). Upon delivery aliquot. Store at -20°C or -80°C. Avoid freeze / thaw cycle.
Storage buffer	Constituents: 1% Sucrose, 1.21% Tris, 0.375% Glycine
Purity	Protein A purified
Clonality	Monoclonal
Clone number	1B1
Isotype	IgG2a
Light chain type	kappa

Applications

The Abpromise guarantee

Our **Abpromise guarantee** covers the use of ab62539 in the following tested applications.

The application notes include recommended starting dilutions; optimal dilutions/concentrations should be determined by the end user.

Application	Abreviews	Notes
Flow Cyt		1/100. ab170191 - Mouse monoclonal IgG2a, is suitable for use as an isotype control with this antibody.
WB		1/500 - 1/5000. Detects a band of approximately 65 kDa (predicted molecular weight: 65 kDa).

Target

Function

Necessary for signaling by class 3 semaphorins and subsequent remodeling of the cytoskeleton. Plays a role in axon guidance, neuronal growth cone collapse and cell migration.

Tissue specificity

Ubiquitous.

Sequence similarities

Belongs to the DHOase family. Hydantoinase/dihydropyrimidinase subfamily.

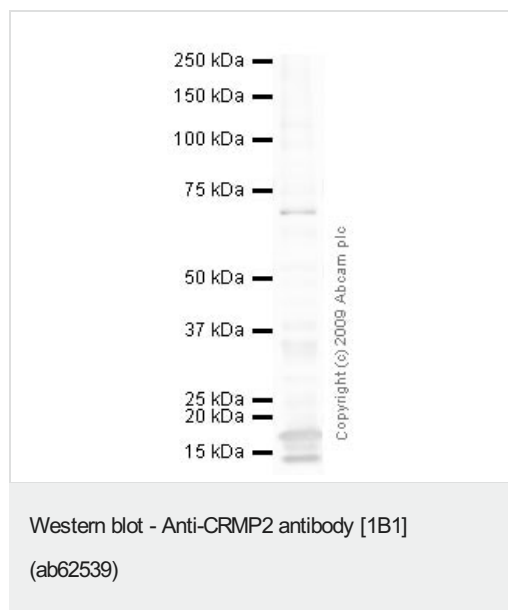
Post-translational modifications

3F4, a monoclonal antibody which strongly stains neurofibrillary tangles in Alzheimer disease brains, specifically labels DPYSL2 when phosphorylated on Ser-518, Ser-522 and Thr-509.

Cellular localization

Cytoplasm.

Images



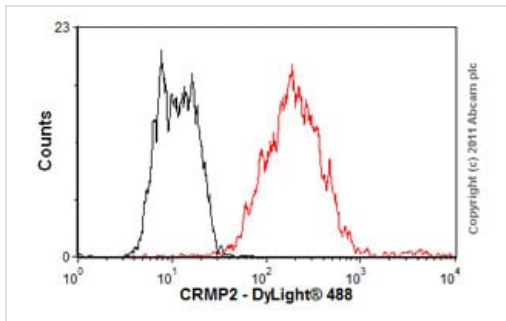
Anti-CRMP2 antibody [1B1] (ab62539) at 1/2500 dilution + CRMP2 antibody [1B1] (ab62539) at 1/2500 dilution + SK N BE (Human neuroblastoma) Whole Cell Lysate at 10 μ g

Secondary

Goat polyclonal to Mouse IgG - H&L - Pre-Adsorbed (HRP) at 1/3000 dilution

Predicted band size: 65 kDa

Observed band size: 70 kDa



Flow Cytometry - Anti-CRMP2 antibody [1B1]
(ab62539)

Overlay histogram showing SH-SY5Y cells stained with ab62539 (red line). The cells were fixed with 80% methanol (5 min) and then permeabilized with 0.1% PBS-Tween for 20 min. The cells were then incubated in 1x PBS / 10% normal goat serum / 0.3M glycine to block non-specific protein-protein interactions followed by the antibody (ab62539, 1/100 dilution) for 30 min at 22°C. The secondary antibody used was DyLight® 488 goat anti-rabbit IgG (H+L) ([ab96899](#)) at 1/500 dilution for 30 min at 22°C. Isotype control antibody (black line) was rabbit IgG (monoclonal) (1µg/1x10⁶ cells) used under the same conditions. Acquisition of >5,000 events was performed.

Please note: All products are "FOR RESEARCH USE ONLY. NOT FOR USE IN DIAGNOSTIC PROCEDURES"

Our Abpromise to you: Quality guaranteed and expert technical support

- Replacement or refund for products not performing as stated on the datasheet
- Valid for 12 months from date of delivery
- Response to your inquiry within 24 hours
- We provide support in Chinese, English, French, German, Japanese and Spanish
- Extensive multi-media technical resources to help you
- We investigate all quality concerns to ensure our products perform to the highest standards

If the product does not perform as described on this datasheet, we will offer a refund or replacement. For full details of the Abpromise, please visit <https://www.abcam.com/abpromise> or contact our technical team.

Terms and conditions

- Guarantee only valid for products bought direct from Abcam or one of our authorized distributors