

Product datasheet

Anti-CRMP2 antibody ab36201

[7 References](#) [2 Images](#)

Overview

Product name	Anti-CRMP2 antibody
Description	Rabbit polyclonal to CRMP2
Host species	Rabbit
Specificity	No cross reactivity was detected with CRMP1, CRMP3, CRMP4 or CRMP5.
Tested applications	Suitable for: WB, IHC-Fr
Species reactivity	Reacts with: Human
Immunogen	A 15 residue synthetic peptide derived from C-terminal domain of human collapsing-response mediator.
General notes	<p>The Life Science industry has been in the grips of a reproducibility crisis for a number of years. Abcam is leading the way in addressing this with our range of recombinant monoclonal antibodies and knockout edited cell lines for gold-standard validation. Please check that this product meets your needs before purchasing.</p> <p>If you have any questions, special requirements or concerns, please send us an inquiry and/or contact our Support team ahead of purchase. Recommended alternatives for this product can be found below, along with publications, customer reviews and Q&As</p>

Properties

Form	Liquid
Storage instructions	Shipped at 4°C. Store at +4°C short term (1-2 weeks). Upon delivery aliquot. Store at -20°C long term.
Storage buffer	Constituent: Whole serum
Purity	Whole antiserum
Clonality	Polyclonal
Isotype	IgG

Applications

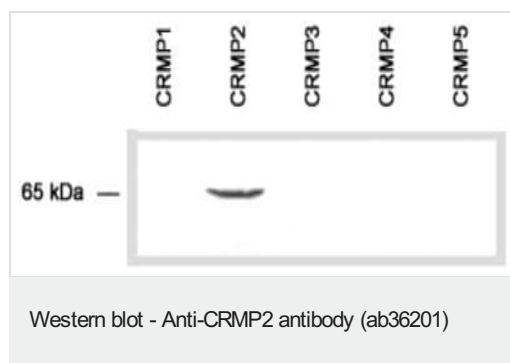
The Abpromise guarantee Our **Abpromise guarantee** covers the use of ab36201 in the following tested applications. The application notes include recommended starting dilutions; optimal dilutions/concentrations should be determined by the end user.

Application	Abreviews	Notes
WB		1/2000. Predicted molecular weight: 63 kDa.
IHC-Fr		1/500.

Target

Function	Necessary for signaling by class 3 semaphorins and subsequent remodeling of the cytoskeleton. Plays a role in axon guidance, neuronal growth cone collapse and cell migration.
Tissue specificity	Ubiquitous.
Sequence similarities	Belongs to the DHOase family. Hydantoinase/dihydropyrimidinase subfamily.
Post-translational modifications	3F4, a monoclonal antibody which strongly stains neurofibrillary tangles in Alzheimer disease brains, specifically labels DPYSL2 when phosphorylated on Ser-518, Ser-522 and Thr-509.
Cellular localization	Cytoplasm.

Images



All lanes : Anti-CRMP2 antibody (ab36201)

Lane 1 : E.coli transformed with cDNA of human CRMP1

Lane 2 : E.coli transformed with cDNA of human CRMP2

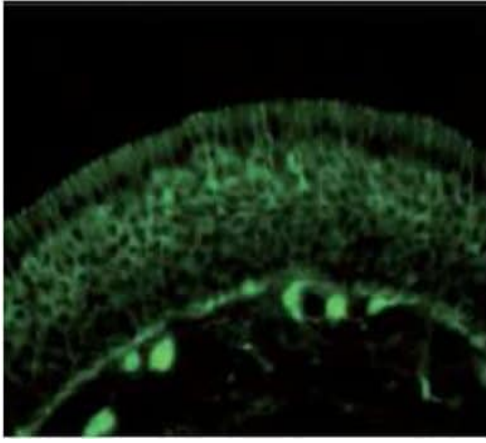
Lane 3 : E.coli transformed with cDNA of human CRMP3

Lane 4 : E.coli transformed with cDNA of human CRMP4

Lane 5 : E.coli transformed with cDNA of human CRMP5

Predicted band size: 63 kDa

Observed band size: 65 kDa



Immunohistochemistry (Frozen sections) - Anti-CRMP2 antibody (ab36201)

Ab36201 staining human CRMP2 in olfactory receptor neurons within the olfactory mucosa by immunohistochemistry.

Please note: All products are "FOR RESEARCH USE ONLY. NOT FOR USE IN DIAGNOSTIC PROCEDURES"

Our Abpromise to you: Quality guaranteed and expert technical support

- Replacement or refund for products not performing as stated on the datasheet
- Valid for 12 months from date of delivery
- Response to your inquiry within 24 hours
- We provide support in Chinese, English, French, German, Japanese and Spanish
- Extensive multi-media technical resources to help you
- We investigate all quality concerns to ensure our products perform to the highest standards

If the product does not perform as described on this datasheet, we will offer a refund or replacement. For full details of the Abpromise, please visit <https://www.abcam.com/abpromise> or contact our technical team.

Terms and conditions

- Guarantee only valid for products bought direct from Abcam or one of our authorized distributors