

Product datasheet

Anti-CRMP2 (phospho T514) antibody ab62478

[12 References](#) [4 Images](#)

Overview

Product name	Anti-CRMP2 (phospho T514) antibody
Description	Rabbit polyclonal to CRMP2 (phospho T514)
Host species	Rabbit
Tested applications	Suitable for: ELISA, ICC/IF, IHC-P, WB
Species reactivity	Reacts with: Mouse, Rat, Human
Immunogen	Synthetic peptide corresponding to Human CRMP2 aa 450-550 (phospho T514). Database link: Q16555

General notes

The Life Science industry has been in the grips of a reproducibility crisis for a number of years. Abcam is leading the way in addressing this with our range of recombinant monoclonal antibodies and knockout edited cell lines for gold-standard validation. Please check that this product meets your needs before purchasing.

If you have any questions, special requirements or concerns, please send us an inquiry and/or contact our Support team ahead of purchase. Recommended alternatives for this product can be found below, along with publications, customer reviews and Q&As

Properties

Form	Liquid
Storage instructions	Shipped at 4°C. Store at -20°C. Stable for 12 months at -20°C.
Storage buffer	pH: 7.40 Preservative: 0.02% Sodium azide Constituents: PBS, 50% Glycerol (glycerin, glycerine), 0.87% Sodium chloride Without Mg ²⁺ and Ca ²⁺
Purity	Immunogen affinity purified
Purification notes	ab62478 was affinity purified from rabbit antiserum by affinity chromatography using epitope specific phosphopeptide. The antibody against non phosphopeptide was removed by chromatography using non phosphopeptide corresponding to the phosphorylation site.
Clonality	Polyclonal
Isotype	IgG

Applications

The Abpromise guarantee

Our **Abpromise guarantee** covers the use of ab62478 in the following tested applications.

The application notes include recommended starting dilutions; optimal dilutions/concentrations should be determined by the end user.

Application	Abreviews	Notes
ELISA		Use at an assay dependent concentration.
ICC/IF		1/500 - 1/1000.
IHC-P		1/50 - 1/100.
WB		Use a concentration of 1 µg/ml. Detects a band of approximately 63 kDa (predicted molecular weight: 63 kDa).

Target

Function

Necessary for signaling by class 3 semaphorins and subsequent remodeling of the cytoskeleton. Plays a role in axon guidance, neuronal growth cone collapse and cell migration.

Tissue specificity

Ubiquitous.

Sequence similarities

Belongs to the DHOase family. Hydantoinase/dihydropyrimidinase subfamily.

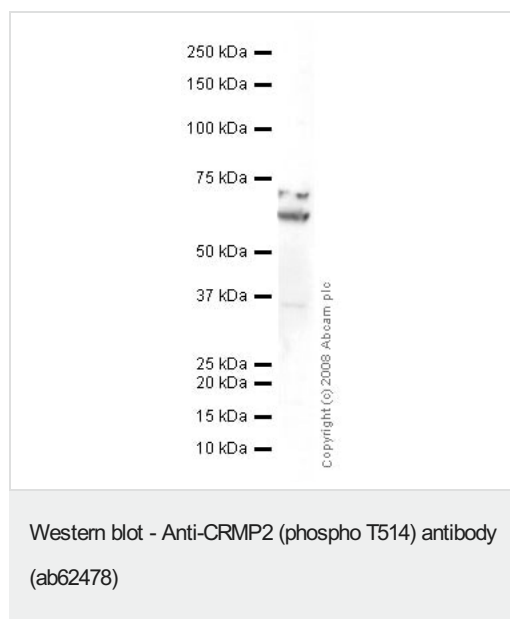
Post-translational modifications

3F4, a monoclonal antibody which strongly stains neurofibrillary tangles in Alzheimer disease brains, specifically labels DPYSL2 when phosphorylated on Ser-518, Ser-522 and Thr-509.

Cellular localization

Cytoplasm.

Images



Anti-CRMP2 (phospho T514) antibody (ab62478) at 1 µg/ml +
Human brain tissue lysate - total protein (**ab29466**) at 10 µg

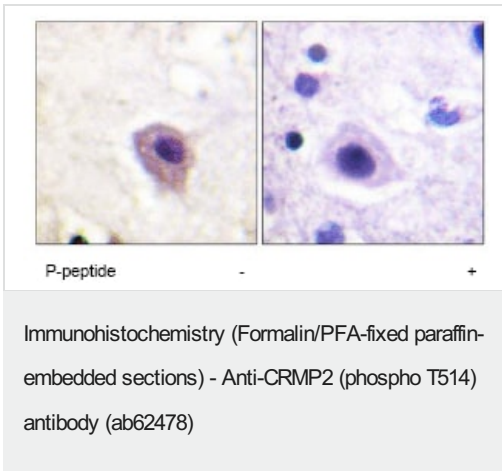
Secondary

Goat polyclonal to Rabbit IgG - H&L - Pre-Adsorbed (HRP) at
1/3000 dilution

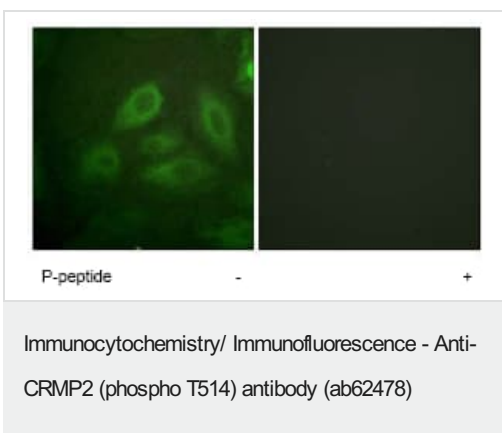
Predicted band size: 63 kDa

Observed band size: 63 kDa

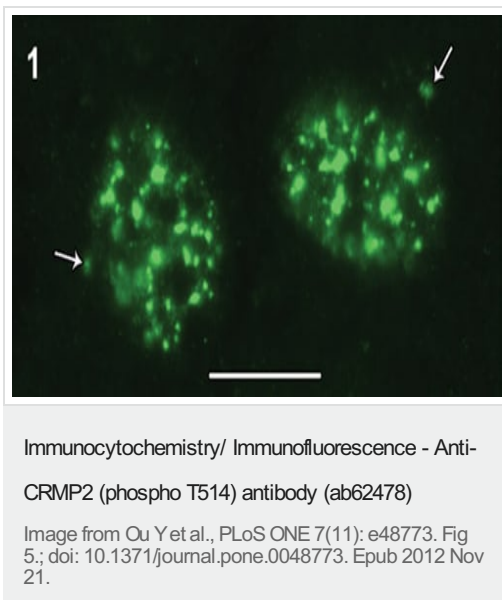
Additional bands at: 70 kDa. We are unsure as to the identity of these extra bands.



ab62478, at 1/50 dilution, staining CRMP2 in paraffin embedded human brain tissue by Immunohistochemistry in the absence (left image) or presence (right image) of the immunising peptide.



ab62478, at 1/500 dilution, staining CRMP2 in HeLa cells by Immunofluorescence, in the absence or presence of the immunising peptide.



Immunofluorescence analysis of RPE (human retinal pigmented epithelium) cells, staining CRMP2 (phospho T514) with ab62478. Cells were fixed in cold methanol and incubated with primary antibody, followed by an AlexaFluor[®]488-conjugated anti rabbit IgG.

Please note: All products are "FOR RESEARCH USE ONLY. NOT FOR USE IN DIAGNOSTIC PROCEDURES"

Our Abpromise to you: Quality guaranteed and expert technical support

- Replacement or refund for products not performing as stated on the datasheet

- Valid for 12 months from date of delivery
- Response to your inquiry within 24 hours

- We provide support in Chinese, English, French, German, Japanese and Spanish
- Extensive multi-media technical resources to help you
- We investigate all quality concerns to ensure our products perform to the highest standards

If the product does not perform as described on this datasheet, we will offer a refund or replacement. For full details of the Abpromise, please visit <https://www.abcam.com/abpromise> or contact our technical team.

Terms and conditions

- Guarantee only valid for products bought direct from Abcam or one of our authorized distributors