




Product datasheet

Anti-CROP antibody ab231982

6 Images

Overview

Product name	Anti-CROP antibody
Description	Rabbit polyclonal to CROP
Host species	Rabbit
Tested applications	Suitable for: IHC-P, WB
Species reactivity	Reacts with: Mouse, Human, Pig Predicted to work with: Cow, Orangutan 
Immunogen	Recombinant fragment (His-T7-tag) corresponding to Human CROP aa 1-250. Expressed in E.coli. Database link: O95232 <div>  Run BLAST with  Run BLAST with </div>
Positive control	WB: Recombinant human CROP; mouse and pig cerebrum tissue lysate; HeLa whole cell lysate. IHC-P: Human liver and kidney tissue.
General notes	<p>The Life Science industry has been in the grips of a reproducibility crisis for a number of years. Abcam is leading the way in addressing this with our range of recombinant monoclonal antibodies and knockout edited cell lines for gold-standard validation. Please check that this product meets your needs before purchasing.</p> <p>If you have any questions, special requirements or concerns, please send us an inquiry and/or contact our Support team ahead of purchase. Recommended alternatives for this product can be found below, along with publications, customer reviews and Q&As</p>

Properties

Form	Liquid
Storage instructions	Shipped at 4°C. Store at +4°C short term (1-2 weeks). Upon delivery aliquot. Store at -20°C long term. Avoid freeze / thaw cycle.
Storage buffer	pH: 7.40 Preservative: 0.02% Sodium azide Constituents: 44.12% PBS, 55.77% Glycerol (glycerin, glycerine)
Purity	Immunogen affinity purified
Purification notes	Antigen-specific affinity chromatography followed by Protein A affinity chromatography.
Clonality	Polyclonal

Isotype IgG

Applications

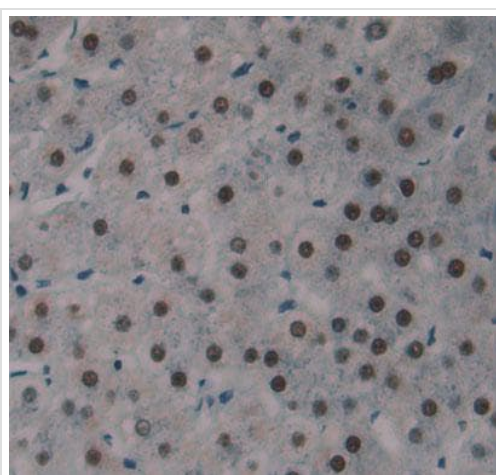
The Abpromise guarantee Our **Abpromise guarantee** covers the use of ab231982 in the following tested applications. The application notes include recommended starting dilutions; optimal dilutions/concentrations should be determined by the end user.

Application	Abreviews	Notes
IHC-P		Use a concentration of 5 - 20 µg/ml.
WB		Use a concentration of 0.2 - 2 µg/ml. Predicted molecular weight: 51 kDa.

Target

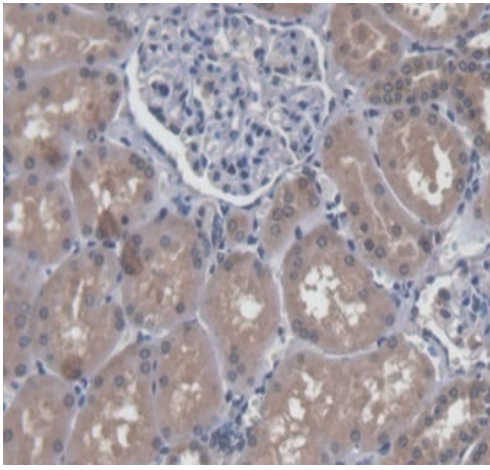
Function	Binds cAMP regulatory element DNA sequence. May play a role in RNA splicing.
Tissue specificity	Widely expressed. Highest levels in heart, brain, pancreas, thymus, ovary, small intestine and peripheral blood leukocytes, as well as cerebellum, putamen and pituitary gland. Lowest levels in lung, liver and kidney. Also expressed in fetal tissues, including brain, heart, kidney, thymus and lung.
Sequence similarities	Belongs to the Luc7 family.
Post-translational modifications	Phosphorylated in vitro by SRPK1, SRPK2 and CLK1.
Cellular localization	Nucleus speckle. The subnuclear localization is affected by cisplatin.

Images



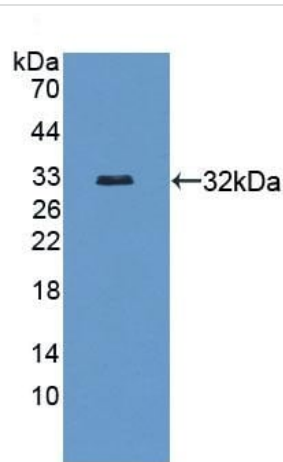
Formalin-fixed, paraffin-embedded human liver tissue stained for CROP using ab231982 at 20 µg/ml in immunohistochemical analysis.

Immunohistochemistry (Formalin/PFA-fixed paraffin-embedded sections) - Anti-CROP antibody (ab231982)



Immunohistochemistry (Formalin/PFA-fixed paraffin-embedded sections) - Anti-CROP antibody (ab231982)

Formalin-fixed, paraffin-embedded human kidney tissue stained for CROP using ab231982 at 20 µg/ml in immunohistochemical analysis.

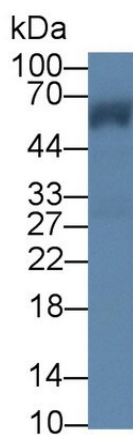


Western blot - Anti-CROP antibody (ab231982)

Anti-CROP antibody (ab231982) at 2 µg/ml + Recombinant human CROP protein

Developed using the ECL technique.

Predicted band size: 51 kDa

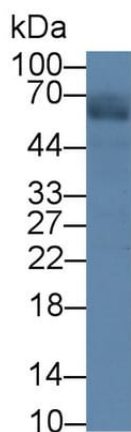


Western blot - Anti-CROP antibody (ab231982)

Anti-CROP antibody (ab231982) at 2 µg/ml + Mouse cerebrum tissue lysate

Developed using the ECL technique.

Predicted band size: 51 kDa

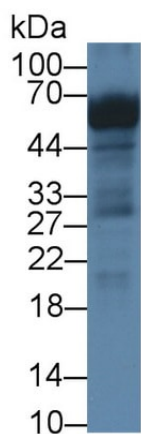


Western blot - Anti-CROP antibody (ab231982)

Anti-CROP antibody (ab231982) at 2 µg/ml + Pig cerebrum tissue lysate

Developed using the ECL technique.

Predicted band size: 51 kDa



Western blot - Anti-CROP antibody (ab231982)

Anti-CROP antibody (ab231982) at 2 µg/ml + HeLa (human epithelial cell line from cervix adenocarcinoma) whole cell lysate

Developed using the ECL technique.

Predicted band size: 51 kDa

Please note: All products are "FOR RESEARCH USE ONLY. NOT FOR USE IN DIAGNOSTIC PROCEDURES"

Our Abpromise to you: Quality guaranteed and expert technical support

- Replacement or refund for products not performing as stated on the datasheet
- Valid for 12 months from date of delivery
- Response to your inquiry within 24 hours
- We provide support in Chinese, English, French, German, Japanese and Spanish
- Extensive multi-media technical resources to help you
- We investigate all quality concerns to ensure our products perform to the highest standards

If the product does not perform as described on this datasheet, we will offer a refund or replacement. For full details of the Abpromise, please visit <https://www.abcam.com/abpromise> or contact our technical team.

Terms and conditions

-
- Guarantee only valid for products bought direct from Abcam or one of our authorized distributors