


Product datasheet

Anti-CROP antibody ab79231

2 Images

Overview

Product name	Anti-CROP antibody
Description	Rabbit polyclonal to CROP
Host species	Rabbit
Tested applications	Suitable for: WB, ICC/IF
Species reactivity	Reacts with: Human Predicted to work with: Mouse, Chicken, Cow, Orangutan 
Immunogen	Synthetic peptide corresponding to Human CROP aa 1-100 (N terminal) conjugated to keyhole limpet haemocyanin. (Peptide available as ab87825)
Positive control	This antibody gave a positive signal in the following whole cell lysates: HeLa; U2OS; Jurkat; HEK293; HepG2; Caco2.
General notes	<p>The Life Science industry has been in the grips of a reproducibility crisis for a number of years. Abcam is leading the way in addressing this with our range of recombinant monoclonal antibodies and knockout edited cell lines for gold-standard validation. Please check that this product meets your needs before purchasing.</p> <p>If you have any questions, special requirements or concerns, please send us an inquiry and/or contact our Support team ahead of purchase. Recommended alternatives for this product can be found below, along with publications, customer reviews and Q&As</p>

Properties

Form	Liquid
Storage instructions	Shipped at 4°C. Store at +4°C short term (1-2 weeks). Upon delivery aliquot. Store at -20°C or -80°C. Avoid freeze / thaw cycle.
Storage buffer	pH: 7.40 Preservative: 0.02% Sodium azide Constituent: PBS

Batches of this product that have a concentration < 1mg/ml may have BSA added as a stabilising agent. If you would like information about the formulation of a specific lot, please contact our scientific support team who will be happy to help.

Purity	Immunogen affinity purified
Clonality	Polyclonal
Isotype	IgG

Applications

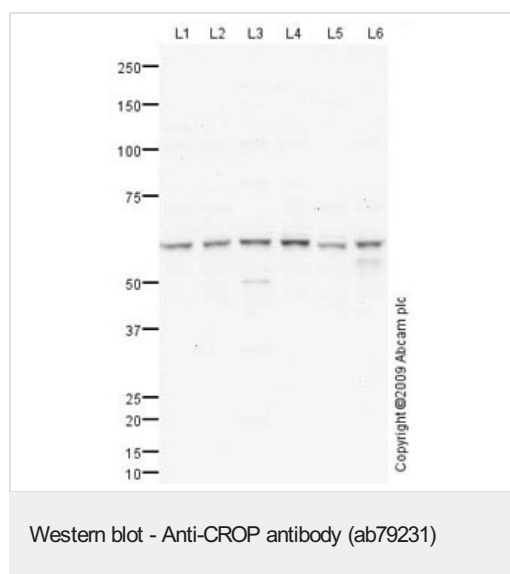
The Abpromise guarantee Our **Abpromise guarantee** covers the use of ab79231 in the following tested applications. The application notes include recommended starting dilutions; optimal dilutions/concentrations should be determined by the end user.

Application	Abreviews	Notes
WB		Use a concentration of 1 µg/ml. Detects a band of approximately 60 kDa (predicted molecular weight: 51 kDa).
ICC/IF		Use a concentration of 1 µg/ml.

Target

Function	Binds cAMP regulatory element DNA sequence. May play a role in RNA splicing.
Tissue specificity	Widely expressed. Highest levels in heart, brain, pancreas, thymus, ovary, small intestine and peripheral blood leukocytes, as well as cerebellum, putamen and pituitary gland. Lowest levels in lung, liver and kidney. Also expressed in fetal tissues, including brain, heart, kidney, thymus and lung.
Sequence similarities	Belongs to the Luc7 family.
Post-translational modifications	Phosphorylated in vitro by SRPK1, SRPK2 and CLK1.
Cellular localization	Nucleus speckle. The subnuclear localization is affected by cisplatin.

Images



All lanes : Anti-CROP antibody (ab79231) at 1 µg/ml

- Lane 1 :** HeLa (Human epithelial carcinoma cell line) Whole Cell Lysate
- Lane 2 :** U2OS (Human osteosarcoma cell line) Whole Cell Lysate
- Lane 3 :** Jurkat (Human T cell lymphoblast-like cell line) Whole Cell Lysate
- Lane 4 :** HEK293 (Human embryonic kidney cell line) Whole Cell Lysate
- Lane 5 :** HepG2 (Human hepatocellular liver carcinoma cell line) Whole Cell Lysate
- Lane 6 :** Caco 2 (Human colonic carcinoma cell line) Whole Cell Lysate

Lysates/proteins at 10 µg per lane.

Secondary

All lanes : Goat polyclonal to Rabbit IgG - H&L - Pre-Adsorbed (HRP) at 1/3000 dilution

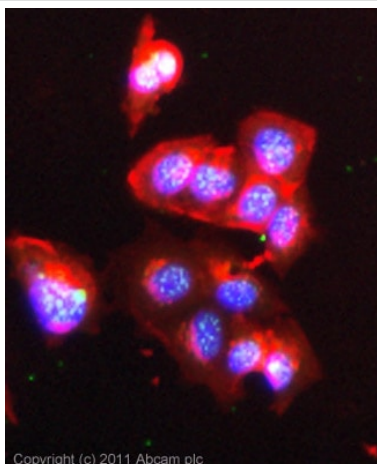
Developed using the ECL technique.

Performed under reducing conditions.

Predicted band size: 51 kDa

Observed band size: 60 kDa

The 60 kDa band observed is comparable to the molecular weight seen with other commercially available antibodies to CROP.



Immunocytochemistry/ Immunofluorescence - Anti-CROP antibody (ab79231)

Please note: All products are "FOR RESEARCH USE ONLY. NOT FOR USE IN DIAGNOSTIC PROCEDURES"

Our Abpromise to you: Quality guaranteed and expert technical support

- Replacement or refund for products not performing as stated on the datasheet
- Valid for 12 months from date of delivery
- Response to your inquiry within 24 hours
- We provide support in Chinese, English, French, German, Japanese and Spanish
- Extensive multi-media technical resources to help you

- We investigate all quality concerns to ensure our products perform to the highest standards

If the product does not perform as described on this datasheet, we will offer a refund or replacement. For full details of the Abpromise, please visit <https://www.abcam.com/abpromise> or contact our technical team.

Terms and conditions

- Guarantee only valid for products bought direct from Abcam or one of our authorized distributors