


## Product datasheet

### Anti-CROP antibody ab80412

[2 Images](#)

#### Overview

<b>Product name</b>	Anti-CROP antibody
<b>Description</b>	Rabbit polyclonal to CROP
<b>Host species</b>	Rabbit
<b>Tested applications</b>	<b>Suitable for:</b> IHC-P, IP
<b>Species reactivity</b>	<b>Reacts with:</b> Mouse, Human <b>Predicted to work with:</b> Rat, Rabbit, Chicken, Cow, Dog, Pig, Chimpanzee, Rhesus monkey, Gorilla, Tilapia, Orangutan 
<b>Immunogen</b>	Synthetic peptide corresponding to a region between residue 1 and 50 of human CROP (NP_057508.2).
<b>Positive control</b>	IHC-P: Human testicular seminoma, mouse colon carcinoma tissue. WB: HeLa cells whole cell lysate.
<b>General notes</b>	<p>The Life Science industry has been in the grips of a reproducibility crisis for a number of years. Abcam is leading the way in addressing this with our range of recombinant monoclonal antibodies and knockout edited cell lines for gold-standard validation. Please check that this product meets your needs before purchasing.</p> <p>If you have any questions, special requirements or concerns, please send us an inquiry and/or contact our Support team ahead of purchase. Recommended alternatives for this product can be found below, along with publications, customer reviews and Q&amp;As</p>

#### Properties

<b>Form</b>	Liquid
<b>Storage instructions</b>	Shipped at 4°C. Upon delivery aliquot and store at -20°C. Avoid freeze / thaw cycles.
<b>Storage buffer</b>	<p>pH: 7</p> <p>Preservative: 0.09% Sodium azide</p> <p>Constituents: 1.815% Tris, 1.764% Sodium citrate, 0.021% PBS</p>
<b>Purity</b>	Immunogen affinity purified
<b>Clonality</b>	Polyclonal
<b>Isotype</b>	IgG

## Applications

### The Abpromise guarantee

Our **Abpromise guarantee** covers the use of ab80412 in the following tested applications.

The application notes include recommended starting dilutions; optimal dilutions/concentrations should be determined by the end user.

Application	Abreviews	Notes
IHC-P		1/500 - 1/2000. Perform heat mediated antigen retrieval with citrate buffer pH 6 before commencing with IHC staining protocol.
IP		Use at 2-5 µg/mg of lysate.

## Target

### Function

Binds cAMP regulatory element DNA sequence. May play a role in RNA splicing.

### Tissue specificity

Widely expressed. Highest levels in heart, brain, pancreas, thymus, ovary, small intestine and peripheral blood leukocytes, as well as cerebellum, putamen and pituitary gland. Lowest levels in lung, liver and kidney. Also expressed in fetal tissues, including brain, heart, kidney, thymus and lung.

### Sequence similarities

Belongs to the Luc7 family.

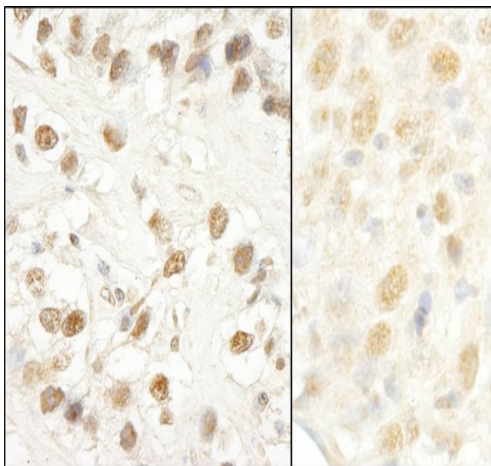
### Post-translational modifications

Phosphorylated in vitro by SRPK1, SRPK2 and CLK1.

### Cellular localization

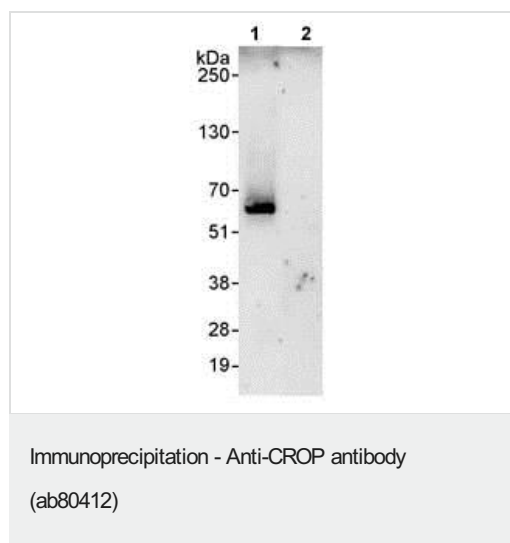
Nucleus speckle. The subnuclear localization is affected by cisplatin.

## Images



Immunohistochemistry (Formalin/PFA-fixed paraffin-embedded sections) analysis of human testicular seminoma (left) and mouse colon carcinoma (right) tissue labelling CROP with ab80412 at 1/1000 (1 µg/ml). Detection: DAB.

Immunohistochemistry (Formalin/PFA-fixed paraffin-embedded sections) - Anti-CROP antibody (ab80412)



Detection of Human CROP in immunoprecipitates of whole cell lysate from HeLa cells (1 mg for IP, 20% of IP loaded) using ab80412 at 3 µg/mg lysate for IP (lane 1). ab80412 was used at 1 µg/ml for subsequent WB detection. Lane 2 represents control IgG IP.

**Please note:** All products are "FOR RESEARCH USE ONLY. NOT FOR USE IN DIAGNOSTIC PROCEDURES"

### Our Abpromise to you: Quality guaranteed and expert technical support

---

- Replacement or refund for products not performing as stated on the datasheet
- Valid for 12 months from date of delivery
- Response to your inquiry within 24 hours
- We provide support in Chinese, English, French, German, Japanese and Spanish
- Extensive multi-media technical resources to help you
- We investigate all quality concerns to ensure our products perform to the highest standards

If the product does not perform as described on this datasheet, we will offer a refund or replacement. For full details of the Abpromise, please visit <https://www.abcam.com/abpromise> or contact our technical team.

### Terms and conditions

---

- Guarantee only valid for products bought direct from Abcam or one of our authorized distributors