


Anti-CSDE1/NRU antibody ab96124

★★★★★ [1 Abreviews](#) [3 References](#) [4 Images](#)

Overview

Product name	Anti-CSDE1/NRU antibody
Description	Rabbit polyclonal to CSDE1/NRU
Host species	Rabbit
Tested applications	Suitable for: WB, IHC-P, ICC/IF
Species reactivity	Reacts with: Human Predicted to work with: Mouse, Rat, Cow 
Immunogen	Recombinant fragment corresponding to Human CSDE1/NRU aa 167-372. (AAH32446)
Positive control	HeLa whole cell lysate (ab150035); A549, HepG2 and HCT116 lysates
General notes	<p>The Life Science industry has been in the grips of a reproducibility crisis for a number of years. Abcam is leading the way in addressing this with our range of recombinant monoclonal antibodies and knockout edited cell lines for gold-standard validation. Please check that this product meets your needs before purchasing.</p> <p>If you have any questions, special requirements or concerns, please send us an inquiry and/or contact our Support team ahead of purchase. Recommended alternatives for this product can be found below, along with publications, customer reviews and Q&As</p>

Properties

Form	Liquid
Storage instructions	Shipped at 4°C. Upon delivery aliquot and store at -20°C or -80°C. Avoid repeated freeze / thaw cycles.
Storage buffer	pH: 7.00 Preservative: 0.01% Thimerosal (merthiolate) Constituents: 1.21% Tris, 0.75% Glycine, 20% Glycerol (glycerin, glycerine)
Purity	Immunogen affinity purified
Clonality	Polyclonal
Isotype	IgG

Applications

The Abpromise guarantee

Our **Abpromise guarantee** covers the use of ab96124 in the following tested applications.

The application notes include recommended starting dilutions; optimal dilutions/concentrations should be determined by the end user.

Application	Abreviews	Notes
WB		1/500 - 1/3000. Predicted molecular weight: 88 kDa.
IHC-P	★★★★★ (1)	1/100 - 1/1000.
ICC/IF		1/100 - 1/1000.

Target

Function

RNA-binding protein. Required for internal initiation of translation of human rhinovirus RNA. May be involved in translationally coupled mRNA turnover. Implicated with other RNA-binding proteins in the cytoplasmic deadenylation/translational and decay interplay of the FOS mRNA mediated by the major coding-region determinant of instability (mCRD) domain.

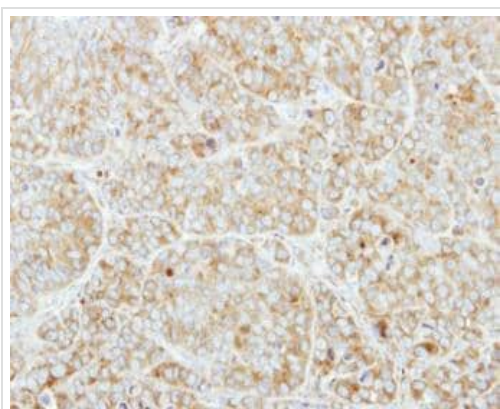
Sequence similarities

Contains 9 CSD (cold-shock) domains.

Cellular localization

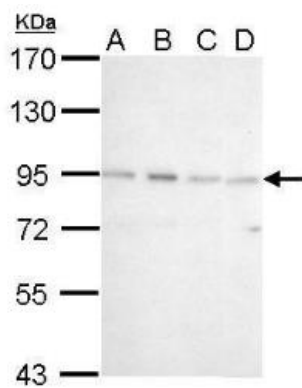
Cytoplasm.

Images



Immunohistochemical analysis of paraffin-embedded MCF7 xenograft, using ab96124 at 1:250 dilution.
Antigen Retrieval: Citrate buffer, pH 6.0, 15 min

Immunohistochemistry (Formalin/PFA-fixed paraffin-embedded sections) - Anti-CSDE1/NRU antibody (ab96124)



Western blot - Anti-CSDE1/NRU antibody (ab96124)

All lanes : Anti-CSDE1/NRU antibody (ab96124) at 1/1000 dilution

Lane 1 : 293T whole cell lysate

Lane 2 : A431 whole cell lysate

Lane 3 : HeLa whole cell lysate

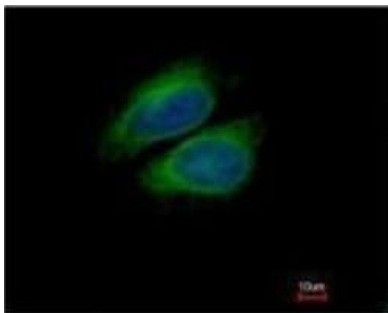
Lane 4 : A375 whole cell lysate

Lysates/proteins at 30 µg per lane.

Secondary

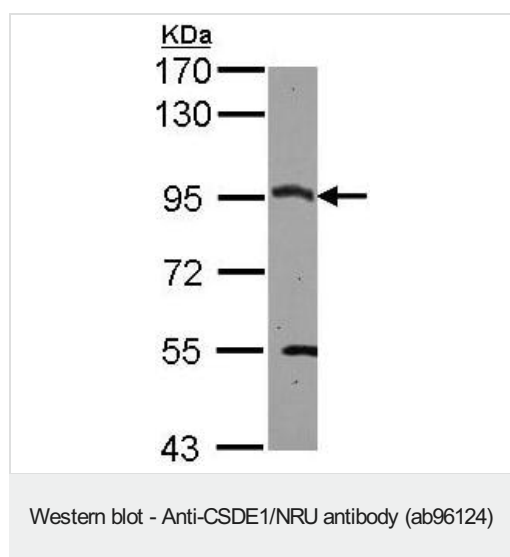
All lanes : The HRP-conjugated anti-rabbit IgG antibody

Predicted band size: 88 kDa



Immunocytochemistry/ Immunofluorescence - Anti-CSDE1/NRU antibody (ab96124)

Immunofluorescence analysis of methanol-fixed HeLa, using ab96124 antibody at 1:200 dilution. Costained with Hoechst 33342.



Anti-CSDE1/NRU antibody (ab96124) at 1/3000 dilution + HeLa whole cell lysate at 30 µg

Predicted band size: 88 kDa

7.5% SDS PAGE

Please note: All products are "FOR RESEARCH USE ONLY. NOT FOR USE IN DIAGNOSTIC PROCEDURES"

Our Abpromise to you: Quality guaranteed and expert technical support

- Replacement or refund for products not performing as stated on the datasheet
- Valid for 12 months from date of delivery
- Response to your inquiry within 24 hours
- We provide support in Chinese, English, French, German, Japanese and Spanish
- Extensive multi-media technical resources to help you
- We investigate all quality concerns to ensure our products perform to the highest standards

If the product does not perform as described on this datasheet, we will offer a refund or replacement. For full details of the Abpromise, please visit <https://www.abcam.com/abpromise> or contact our technical team.

Terms and conditions

- Guarantee only valid for products bought direct from Abcam or one of our authorized distributors