


Product datasheet

Anti-CSF-1-R antibody [SP211] ab183316

Recombinant RabMAb

★★★★☆ [4 Abreviews](#) [16 References](#) [10 Images](#)

Overview

Product name	Anti-CSF-1-R antibody [SP211]
Description	Rabbit monoclonal [SP211] to CSF-1-R
Host species	Rabbit
Tested applications	Suitable for: Flow Cyt (Intra), IHC-P
Species reactivity	Reacts with: Rat, Human Predicted to work with: Mouse 
Immunogen	Synthetic peptide. This information is proprietary to Abcam and/or its suppliers.
Positive control	IHC-P: Human colon, lung, liver, skin, tonsil and skin squamous cell carcinoma, rat spleen tissues. Flow Cyt (intra): SK-BR-3 cells.
General notes	This product is FOR RESEARCH USE ONLY. For commercial use, please contact partnerships@abcam.com.

Properties

Form	Liquid
Storage instructions	Shipped at 4°C. Store at +4°C short term (1-2 weeks). Upon delivery aliquot. Store at -20°C long term. Avoid freeze / thaw cycle.
Storage buffer	pH: 7.20 Preservative: 0.1% Sodium azide Constituents: PBS, 1% BSA
Purity	Protein A/G purified
Purification notes	Purified from TCS by protein A/G.
Clonality	Monoclonal
Clone number	SP211
Isotype	IgG

Applications

The Abpromise guarantee

Our **Abpromise guarantee** covers the use of ab183316 in the following tested applications.

The application notes include recommended starting dilutions; optimal dilutions/concentrations should be determined by the end user.

Application	Abreviews	Notes
Flow Cyt (Intra)		1/20.
IHC-P	★★★★☆ (3)	1/100. Perform heat mediated antigen retrieval with citrate buffer pH 6 before commencing with IHC staining protocol. ab172730 - Rabbit monoclonal IgG, is suitable for use as an isotype control with this antibody. Boil tissue section in 10mM citrate buffer, pH 6.0 for 10 min followed by cooling at room temperature for 20 min.

Target

Function

Protein tyrosine-kinase transmembrane receptor for CSF1 and IL34.

Tissue specificity

Expressed in bone marrow and in differentiated blood mononuclear cells.

Sequence similarities

Belongs to the protein kinase superfamily. Tyr protein kinase family. CSF-1/PDGF receptor subfamily.

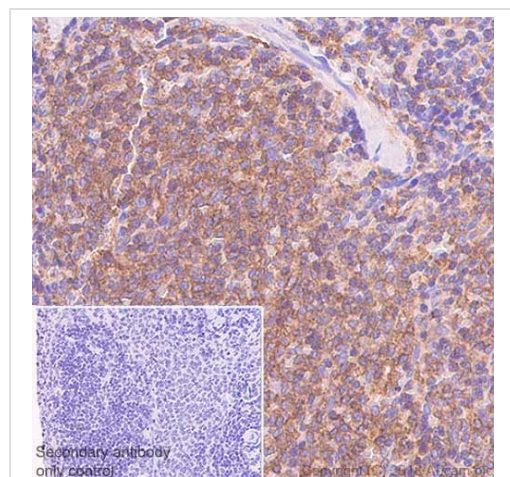
Contains 5 Ig-like C2-type (immunoglobulin-like) domains.

Contains 1 protein kinase domain.

Cellular localization

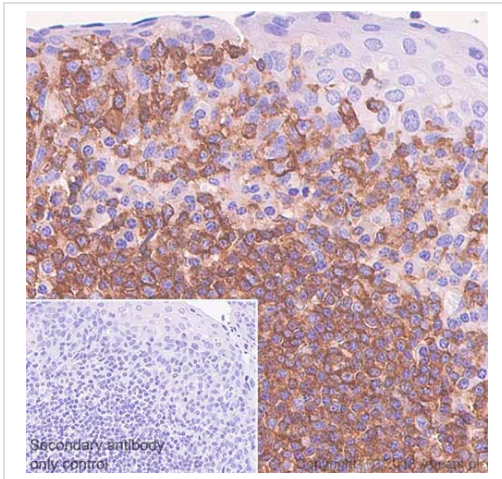
Membrane.

Images



Immunohistochemistry (Formalin/PFA-fixed paraffin-embedded sections) analysis of rat spleen tissue sections labeling CSF-1-R with ab183316 at 1/100 dilution (1.13 µg/ml). Heat mediated antigen retrieval with sodium citrate buffer (pH 6.0, epitope retrieval solution 1) for 10mins. Rabbit specific IHC polymer detection kit HRP/DAB (**ab209101**) was used as the secondary antibody. Hematoxylin was used as a counterstain. Positive staining on the rat spleen, performed on a Leica Biosystems BOND™ RX instrument. The section was incubated with ab183316 for 10 mins at room temperature.

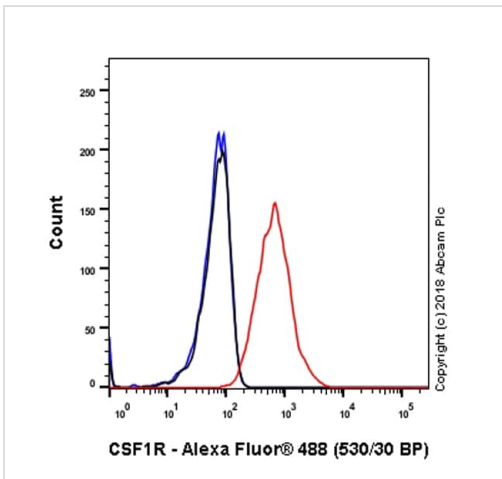
Immunohistochemistry (Formalin/PFA-fixed paraffin-embedded sections) - Anti-CSF-1-R antibody [SP211] (ab183316)



Immunohistochemistry (Formalin/PFA-fixed paraffin-embedded sections) - Anti-CSF-1-R antibody [SP211] (ab183316)

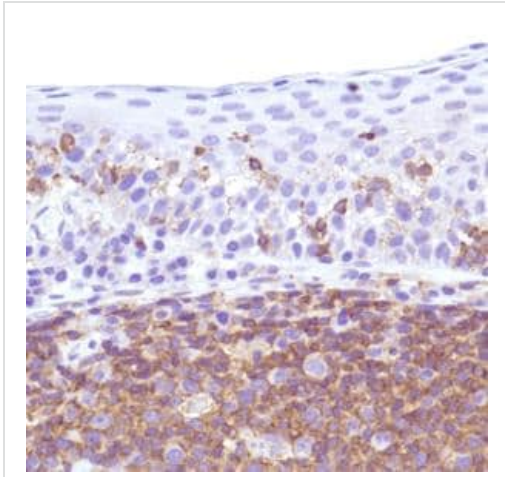
Immunohistochemistry (Formalin/PFA-fixed paraffin-embedded sections) analysis of Human tonsil tissue sections labeling CSF-1-R with ab183316 at 1/100 dilution (1.13 µg/ml). Heat mediated antigen retrieval with sodium citrate buffer (pH 6.0, epitope retrieval solution 1) for 10mins. Rabbit specific IHC polymer detection kit HRP/DAB (**ab209101**) was used as the secondary antibody. Hematoxylin was used as a counterstain. Positive staining on the human tonsil, performed on a Leica Biosystems BOND™ RX instrument.

The section was incubated with ab183316 for 10 mins at room temperature.



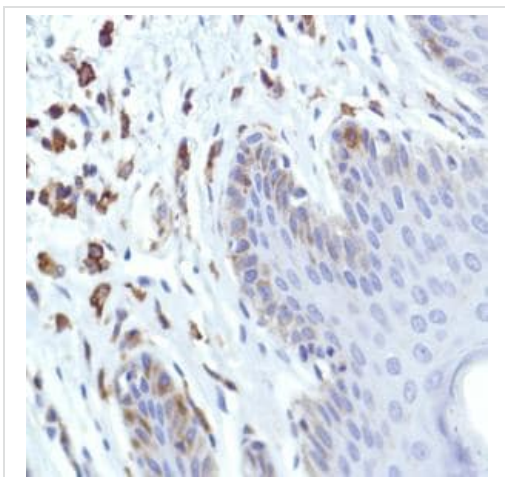
Flow Cytometry (Intracellular) - Anti-CSF-1-R antibody [SP211] (ab183316)

Intracellular Flow Cytometry analysis of SK-BR-3 (human mammary gland adenocarcinoma) labeling CSF-1-R with purified ab183316 at 1/20 dilution (5.65µg/ml) (red). Cells were fixed with 4% paraformaldehyde and permeabilised with 90% methanol. Goat anti rabbit IgG (Alexa Fluor® 488, **ab150077**) at 1/2000 dilution was used as a secondary antibody. Isotype control - Rabbit monoclonal IgG (**ab172730**) (Black). Unlabeled control - Unlabelled cells (blue).



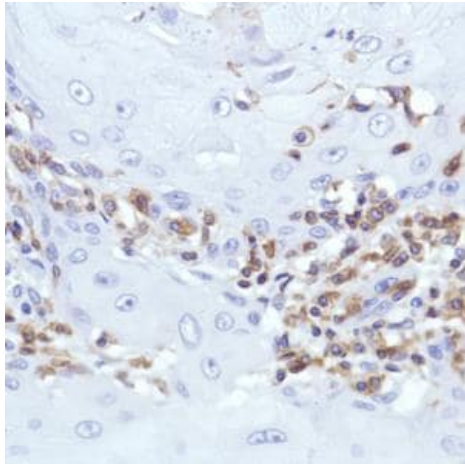
Immunohistochemical analysis of human tonsil tissue labeling CSF-1-R using ab183316 at a 1/100 dilution

Immunohistochemistry (Formalin/PFA-fixed paraffin-embedded sections) - Anti-CSF-1-R antibody [SP211] (ab183316)



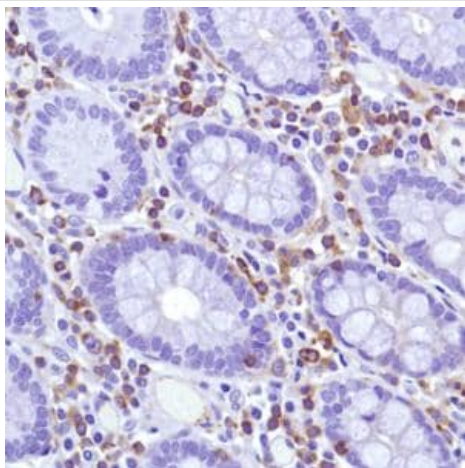
Immunohistochemical analysis of human skin tissue labeling CSF-1-R using ab183316 at a 1/100 dilution

Immunohistochemistry (Formalin/PFA-fixed paraffin-embedded sections) - Anti-CSF-1-R antibody [SP211] (ab183316)



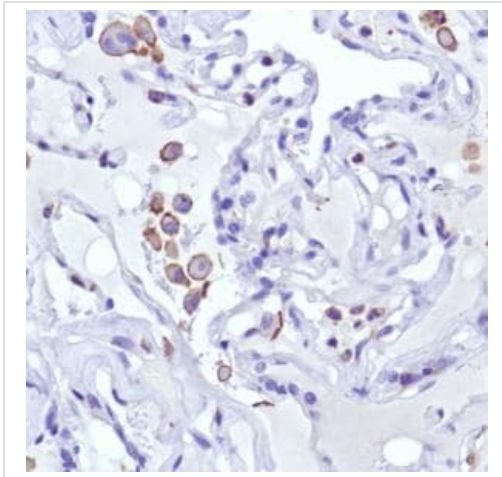
Immunohistochemical analysis of human skin squamous cell carcinoma tissue labeling CSF-1-R using ab183316 at a 1/100 dilution

Immunohistochemistry (Formalin/PFA-fixed paraffin-embedded sections) - Anti-CSF-1-R antibody [SP211] (ab183316)



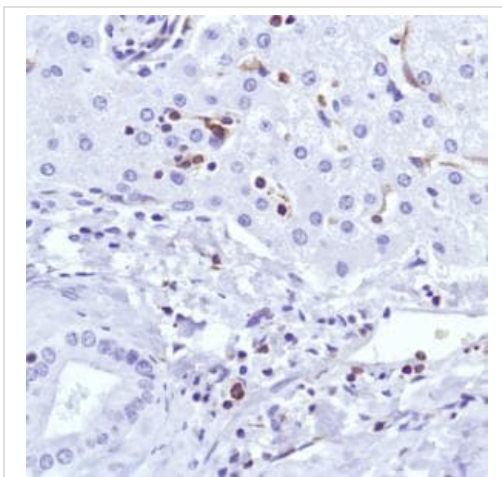
Immunohistochemical analysis of human colon tissue labeling CSF-1-R using ab183316 at a 1/100 dilution.

Immunohistochemistry (Formalin/PFA-fixed paraffin-embedded sections) - Anti-CSF-1-R antibody [SP211] (ab183316)



Immunohistochemical analysis of human lung tissue labeling CSF-1-R using ab183316 at a 1/100 dilution.

Immunohistochemistry (Formalin/PFA-fixed paraffin-embedded sections) - Anti-CSF-1-R antibody [SP211] (ab183316)



Immunohistochemical analysis of human liver tissue labeling CSF-1-R using ab183316 at a 1/100 dilution.

Immunohistochemistry (Formalin/PFA-fixed paraffin-embedded sections) - Anti-CSF-1-R antibody [SP211] (ab183316)

Why choose a recombinant antibody?



Research with confidence
Consistent and reproducible results



Long-term and scalable supply
Recombinant technology



Success from the first experiment
Confirmed specificity



Ethical standards compliant
Animal-free production

Anti-CSF-1-R antibody [SP211] (ab183316)

Please note: All products are "FOR RESEARCH USE ONLY. NOT FOR USE IN DIAGNOSTIC PROCEDURES"

Our Abpromise to you: Quality guaranteed and expert technical support

- Replacement or refund for products not performing as stated on the datasheet
- Valid for 12 months from date of delivery
- Response to your inquiry within 24 hours
- We provide support in Chinese, English, French, German, Japanese and Spanish
- Extensive multi-media technical resources to help you
- We investigate all quality concerns to ensure our products perform to the highest standards

If the product does not perform as described on this datasheet, we will offer a refund or replacement. For full details of the Abpromise, please visit <https://www.abcam.com/abpromise> or contact our technical team.

Terms and conditions

- Guarantee only valid for products bought direct from Abcam or one of our authorized distributors