


## Product datasheet

# Anti-CSN1 antibody ab10413

[5 References](#) [2 Images](#)

### Overview

---

<b>Product name</b>	Anti-CSN1 antibody
<b>Description</b>	Rabbit polyclonal to CSN1
<b>Host species</b>	Rabbit
<b>Tested applications</b>	<b>Suitable for:</b> WB, IHC-P
<b>Species reactivity</b>	<b>Reacts with:</b> Human <b>Predicted to work with:</b> Mouse, Rat, Horse, Chicken, Guinea pig, Cow, Dog, Turkey, Chimpanzee, Rhesus monkey, Gorilla, Orangutan 
<b>Immunogen</b>	Synthetic peptide corresponding to Human CSN1 aa 400 to the C-terminus (C terminal). Database link: <a href="#">2873</a>
<b>Positive control</b>	Whole cell lysate from mock transfected or CSN1 transfected HEK293T cells.
<b>General notes</b>	<p>The Life Science industry has been in the grips of a reproducibility crisis for a number of years. Abcam is leading the way in addressing this with our range of recombinant monoclonal antibodies and knockout edited cell lines for gold-standard validation. Please check that this product meets your needs before purchasing.</p> <p>If you have any questions, special requirements or concerns, please send us an inquiry and/or contact our Support team ahead of purchase. Recommended alternatives for this product can be found below, along with publications, customer reviews and Q&amp;As</p>

### Properties

---

<b>Form</b>	Liquid
<b>Storage instructions</b>	Shipped at 4°C. Upon delivery aliquot and store at -20°C. Avoid freeze / thaw cycles.
<b>Storage buffer</b>	pH: 7 Preservative: 0.1% Sodium azide Constituents: 0.021% PBS, 1.764% Sodium citrate, 1.815% Tris
<b>Purity</b>	Immunogen affinity purified
<b>Purification notes</b>	Antibodies were affinity purified using the peptide immobilized on solid support.
<b>Clonality</b>	Polyclonal
<b>Isotype</b>	IgG

## Applications

---

**The Abpromise guarantee** Our **Abpromise guarantee** covers the use of ab10413 in the following tested applications. The application notes include recommended starting dilutions; optimal dilutions/concentrations should be determined by the end user.

Application	Abreviews	Notes
WB		1/1000 - 1/10000. Detects a band of approximately 60 kDa.
IHC-P		1/500 - 1/2000. Perform heat mediated antigen retrieval with citrate buffer pH 6 before commencing with IHC staining protocol.

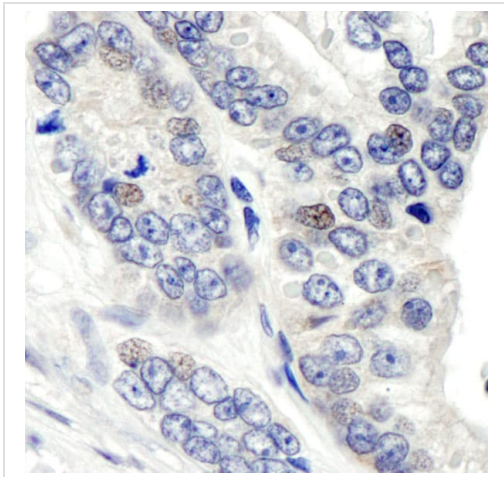
## Target

---

<b>Function</b>	Essential component of the COP9 signalosome complex (CSN), a complex involved in various cellular and developmental processes. The CSN complex is an essential regulator of the ubiquitin (Ubl) conjugation pathway by mediating the deneddylation of the cullin subunits of SCF-type E3 ligase complexes, leading to decrease the Ubl ligase activity of SCF-type complexes such as SCF, CSA or DDB2. The complex is also involved in phosphorylation of p53/TP53, c-jun/JUN, I $\kappa$ B $\alpha$ /NFKBIA, ITPK1 and IRF8/ICSBP, possibly via its association with CK2 and PKD kinases. CSN-dependent phosphorylation of TP53 and JUN promotes and protects degradation by the Ubl system, respectively. Suppresses G-protein- and mitogen-activated protein kinase-mediated signal transduction.
<b>Tissue specificity</b>	Widely expressed.
<b>Sequence similarities</b>	Belongs to the CSN1 family. Contains 1 PCI domain.
<b>Domain</b>	The PCI domain is necessary and sufficient for the interactions with other CSN subunits of the complex. Mediates the interaction with CAPN8. The N-terminal part (1-216), which is not required for deneddylation activity and CSN complex formation, is nevertheless essential for other aspects of CSN complex function, such as repression of c-fos/FOS expression.
<b>Post-translational modifications</b>	Phosphorylated upon DNA damage, probably by ATM or ATR.
<b>Cellular localization</b>	Cytoplasm. Nucleus.

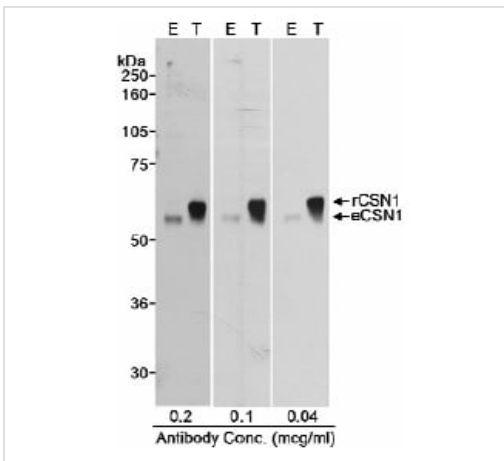
## Images

---



Immunohistochemistry (Formalin/PFA-fixed paraffin-embedded sections) analysis of human prostate carcinoma tissue labelling CSN1 with ab10413 at 1/1000 (1µg/ml). Detection: DAB.

Immunohistochemistry (Formalin/PFA-fixed paraffin-embedded sections) - Anti-CSN1 antibody (ab10413)



Detection of Human CSN1 by Western Blot. Samples: Whole cell lysate (50 mcg – E; 10 mcg – T) from mock transfected (E) or CSN1 transfected (T) HEK293T cells.

Western blot - Anti-CSN1 antibody (ab10413)

**Please note:** All products are "FOR RESEARCH USE ONLY. NOT FOR USE IN DIAGNOSTIC PROCEDURES"

**Our Abpromise to you: Quality guaranteed and expert technical support**

- Replacement or refund for products not performing as stated on the datasheet
- Valid for 12 months from date of delivery

- Response to your inquiry within 24 hours
- We provide support in Chinese, English, French, German, Japanese and Spanish
- Extensive multi-media technical resources to help you
- We investigate all quality concerns to ensure our products perform to the highest standards

If the product does not perform as described on this datasheet, we will offer a refund or replacement. For full details of the Abpromise, please visit <https://www.abcam.com/abpromise> or contact our technical team.

### **Terms and conditions**

---

- Guarantee only valid for products bought direct from Abcam or one of our authorized distributors