


## Product datasheet

# Anti-CSN2 antibody ab10426

[1 References](#) [2 Images](#)

### Overview

---

<b>Product name</b>	Anti-CSN2 antibody
<b>Description</b>	Rabbit polyclonal to CSN2
<b>Host species</b>	Rabbit
<b>Tested applications</b>	<b>Suitable for:</b> WB, IHC-P
<b>Species reactivity</b>	<b>Reacts with:</b> Mouse, Human <b>Predicted to work with:</b> Rat, Rabbit, Horse, Chicken, Guinea pig, Cow, Dog, Pig, Xenopus laevis, Chimpanzee, Drosophila melanogaster, Zebrafish, Rhesus monkey, Gorilla, Orangutan, Xenopus tropicalis 
<b>Immunogen</b>	Synthetic peptide corresponding to CSN2. The epitope recognized by ab10426 maps to a region between residues 1 and 50 of human CSN2. Database link: <a href="#">P61201</a>
<b>Positive control</b>	WB: HEK293T cells.
<b>General notes</b>	<p>CSN2 is a subunit of the JUN activation-domain binding protein 1 (JAB1), containing signalosome complex (or COP9 complex) which has kinase activity and phosphorylates C-JUN. The signalosome complex may play a role in signal transduction.</p> <p>The Life Science industry has been in the grips of a reproducibility crisis for a number of years. Abcam is leading the way in addressing this with our range of recombinant monoclonal antibodies and knockout edited cell lines for gold-standard validation. Please check that this product meets your needs before purchasing.</p> <p>If you have any questions, special requirements or concerns, please send us an inquiry and/or contact our Support team ahead of purchase. Recommended alternatives for this product can be found below, along with publications, customer reviews and Q&amp;As</p>

### Properties

---

<b>Form</b>	Liquid
<b>Storage instructions</b>	Shipped at 4°C. Upon delivery aliquot and store at -20°C. Avoid freeze / thaw cycles.
<b>Storage buffer</b>	pH: 7 Preservative: 0.1% Sodium azide Constituents: 0.021% PBS, 1.764% Sodium citrate, 1.815% Tris
<b>Purity</b>	Immunogen affinity purified

<b>Purification notes</b>	Antibodies were affinity purified using the peptide immobilized on solid support.
<b>Primary antibody notes</b>	CSN2 is a subunit of the JUN activation-domain binding protein 1 (JAB1), containing signalosome complex (or COP9 complex) which has kinase activity and phosphorylates C-JUN. The signalosome complex may play a role in signal transduction.
<b>Clonality</b>	Polyclonal
<b>Isotype</b>	IgG

## Applications

**The Abpromise guarantee** Our **Abpromise guarantee** covers the use of ab10426 in the following tested applications. The application notes include recommended starting dilutions; optimal dilutions/concentrations should be determined by the end user.

Application	Abreviews	Notes
<b>WB</b>		1/1000 - 1/10000. Detects a band of approximately 55 kDa (predicted molecular weight: 52 kDa).
<b>IHC-P</b>		1/1000 - 1/5000. Perform heat mediated antigen retrieval with citrate buffer pH 6 before commencing with IHC staining protocol.

## Target

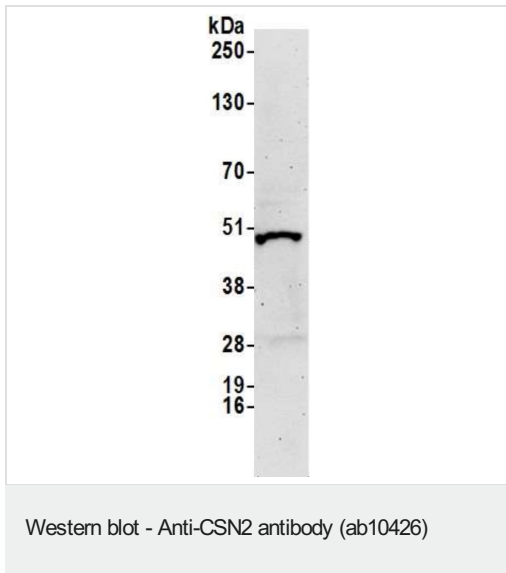
**Function** Essential component of the COP9 signalosome complex (CSN), a complex involved in various cellular and developmental processes. The CSN complex is an essential regulator of the ubiquitin (Ubl) conjugation pathway by mediating the deneddylation of the cullin subunits of SCF-type E3 ligase complexes, leading to decrease the Ubl ligase activity of SCF-type complexes such as SCF, CSA or DDB2. The complex is also involved in phosphorylation of p53/TP53, c-jun/JUN, I kappa B alpha/NFKBIA, ITPK1 and IRF8/ICSBP, possibly via its association with CK2 and PKD kinases. CSN-dependent phosphorylation of TP53 and JUN promotes and protects degradation by the Ubl system, respectively. Involved in early stage of neuronal differentiation via its interaction with NIF3L1.

**Sequence similarities** Belongs to the CSN2 family.  
Contains 1 PCI domain.

**Post-translational modifications** Phosphorylated by CK2 and PKD kinases.

**Cellular localization** Cytoplasm. Nucleus.

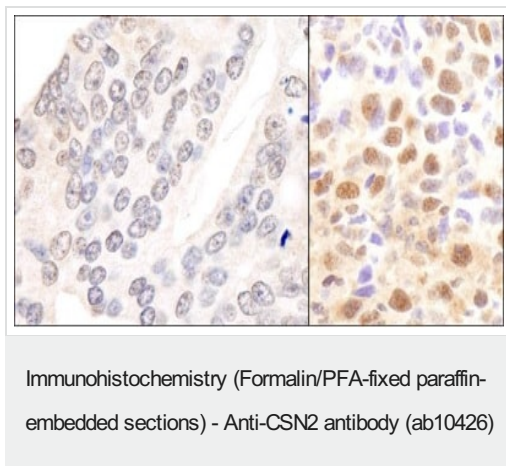
## Images



Anti-CSN2 antibody (ab10426) at 1/10000 dilution + HEK293T  
Whole cell lysate at 50 µg

**Predicted band size:** 52 kDa

Detection: Chemiluminescence with an exposure time of 3 minutes.



IHC-P section of human prostate carcinoma (left) and mouse squamous cell carcinoma (right). Epitope retrieval with citrate buffer pH 6.0

Antibody used at a dilution of 1:5,000 (0.2µg/ml) and 1:1,000 (1µg/ml).

Detection: DAB

**Please note:** All products are "FOR RESEARCH USE ONLY. NOT FOR USE IN DIAGNOSTIC PROCEDURES"

### Our Abpromise to you: Quality guaranteed and expert technical support

- Replacement or refund for products not performing as stated on the datasheet
- Valid for 12 months from date of delivery
- Response to your inquiry within 24 hours
- We provide support in Chinese, English, French, German, Japanese and Spanish
- Extensive multi-media technical resources to help you
- We investigate all quality concerns to ensure our products perform to the highest standards

If the product does not perform as described on this datasheet, we will offer a refund or replacement. For full details of the Abpromise,

please visit <https://www.abcam.com/abpromise> or contact our technical team.

## **Terms and conditions**

---

- Guarantee only valid for products bought direct from Abcam or one of our authorized distributors