

Product datasheet

Anti-CSNK2A1 (phospho T360 + S362) antibody ab119410

★★★★★ [1 Abreviews](#) [3 References](#) [1 Image](#)

Overview

Product name	Anti-CSNK2A1 (phospho T360 + S362) antibody
Description	Rabbit polyclonal to CSNK2A1 (phospho T360 + S362)
Host species	Rabbit
Tested applications	Suitable for: WB
Species reactivity	Reacts with: Recombinant fragment
Immunogen	Synthetic peptide corresponding to Human CSNK2A1 (phospho T360 + S362) conjugated to keyhole limpet haemocyanin. Database link: NP_001894.2
Positive control	Recombinant proteins CSNK2A1 wt, CSNK2A1 T360A, CSNK2A1 S362A, CSNK2A1T360/S362A phosphorylated by ERK2
General notes	<p>The Life Science industry has been in the grips of a reproducibility crisis for a number of years. Abcam is leading the way in addressing this with our range of recombinant monoclonal antibodies and knockout edited cell lines for gold-standard validation. Please check that this product meets your needs before purchasing.</p> <p>If you have any questions, special requirements or concerns, please send us an inquiry and/or contact our Support team ahead of purchase. Recommended alternatives for this product can be found below, along with publications, customer reviews and Q&As</p>

Properties

Form	Liquid
Storage instructions	Shipped at 4°C. Store at -20°C. Stable for 12 months at -20°C.
Storage buffer	pH: 7.40 Preservative: 0.02% Sodium azide Constituents: 49% PBS, 50% Glycerol, 0.88% Sodium chloride (without Mg ²⁺ and Ca ²⁺)
Purity	Immunogen affinity purified
Purification notes	ab119410 was purified by affinity-chromatography using epitope-specific phosphopeptide. The antibody against non-phosphopeptide was removed by chromatography using non-

phosphopeptide corresponding to the phosphorylation site.

Clonality

Polyclonal

Isotype

IgG

Applications

The Abpromise guarantee

Our **Abpromise guarantee** covers the use of ab119410 in the following tested applications.

The application notes include recommended starting dilutions; optimal dilutions/concentrations should be determined by the end user.

Application	Abreviews	Notes
WB	★★★★★ (1)	1/1000. Detects a band of approximately 42 kDa (predicted molecular weight: 45 kDa).

Target

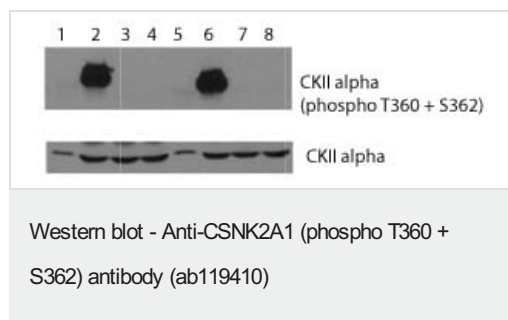
Function

Casein kinases are operationally defined by their preferential utilization of acidic proteins such as caseins as substrates. The alpha and alpha' chains contain the catalytic site. Participates in Wnt signaling. CK2 phosphorylates 'Ser-392' of p53/TP53 following UV irradiation.

Sequence similarities

Belongs to the protein kinase superfamily. Ser/Thr protein kinase family. CK2 subfamily. Contains 1 protein kinase domain.

Images



All lanes : Anti-CSNK2A1 (phospho T360 + S362) antibody (ab119410) at 1/1000 dilution

Lane 1 : CSNK2A1

Lane 2 : CSNK2A1 + ERK2

Lane 3 : CSNK2A1 T360A

Lane 4 : CSNK2A1 T360A + ERK2

Lane 5 : CSNK2A1 S362A

Lane 6 : CSNK2A1 S362A + ERK2

Lane 7 : CSNK2A1 T360/S362A

Lane 8 : CSNK2A1 T360/S362A + ERK2

Predicted band size: 45 kDa

Lower panel stained with CSNK2A1 antibody as a loading control.

Please note: All products are "FOR RESEARCH USE ONLY. NOT FOR USE IN DIAGNOSTIC PROCEDURES"

Our Abpromise to you: Quality guaranteed and expert technical support

- Replacement or refund for products not performing as stated on the datasheet
- Valid for 12 months from date of delivery
- Response to your inquiry within 24 hours

- We provide support in Chinese, English, French, German, Japanese and Spanish
- Extensive multi-media technical resources to help you
- We investigate all quality concerns to ensure our products perform to the highest standards

If the product does not perform as described on this datasheet, we will offer a refund or replacement. For full details of the Abpromise, please visit <https://www.abcam.com/abpromise> or contact our technical team.

Terms and conditions

- Guarantee only valid for products bought direct from Abcam or one of our authorized distributors