


## Product datasheet

# Anti-CSRP1 antibody ab175319

[1 References](#) [2 Images](#)

### Overview

---

<b>Product name</b>	Anti-CSRP1 antibody
<b>Description</b>	Rabbit polyclonal to CSRP1
<b>Host species</b>	Rabbit
<b>Tested applications</b>	<b>Suitable for:</b> IHC-P
<b>Species reactivity</b>	<b>Reacts with:</b> Human <b>Predicted to work with:</b> Chicken, Cow, Orangutan 
<b>Immunogen</b>	Recombinant full length protein corresponding to Human CSRP1 aa 1-193. Sequence: MPNWGGGKKCGVCQKTVYFAEEVQCEGNSFHKSCFLC MVCKKNLDSTTVA VHGEEIYCKSCYGGKKGPKGYGYGQGAGTLSTDKGESLGI KHEEAPGHRP TTNPNAKFAQKIGGSERCPRCSQAVYAAEKVIGAGKSW HKACFRCAKCG KGLESTTLADKDG EYCKGCYAKNFGPKGFGFGQGAGAL VHSE  Database link: <a href="#">P21291</a> <a href="#">Run BLAST with</a> <a href="#">Run BLAST with</a>
<b>Positive control</b>	Stomach cell lysate
<b>General notes</b>	<p>The Life Science industry has been in the grips of a reproducibility crisis for a number of years. Abcam is leading the way in addressing this with our range of recombinant monoclonal antibodies and knockout edited cell lines for gold-standard validation. Please check that this product meets your needs before purchasing.</p> <p>If you have any questions, special requirements or concerns, please send us an inquiry and/or contact our Support team ahead of purchase. Recommended alternatives for this product can be found below, along with publications, customer reviews and Q&amp;As</p>

### Properties

---

<b>Form</b>	Liquid
<b>Storage instructions</b>	Shipped at 4°C. Store at +4°C short term (1-2 weeks). Upon delivery aliquot. Store at -20°C long

term. Avoid freeze / thaw cycle.

**Storage buffer**

pH: 7.30  
Preservative: 0.02% Sodium azide  
Constituents: 50% Glycerol, 49% PBS

**Purity**

Protein A purified

**Clonality**

Polyclonal

**Isotype**

IgG

**Applications**

**The Abpromise guarantee**

Our **Abpromise guarantee** covers the use of ab175319 in the following tested applications.

The application notes include recommended starting dilutions; optimal dilutions/concentrations should be determined by the end user.

Application	Abreviews	Notes
IHC-P		1/50 - 1/200. <b>ab171870</b> - Rabbit polyclonal IgG, is suitable for use as an isotype control with this antibody.

**Target**

**Function**

Could play a role in neuronal development.

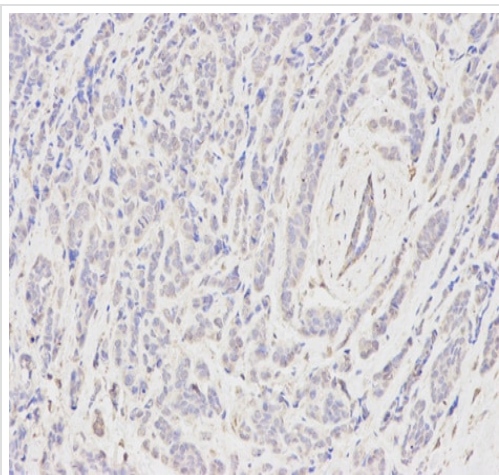
**Sequence similarities**

Contains 2 LIM zinc-binding domains.

**Cellular localization**

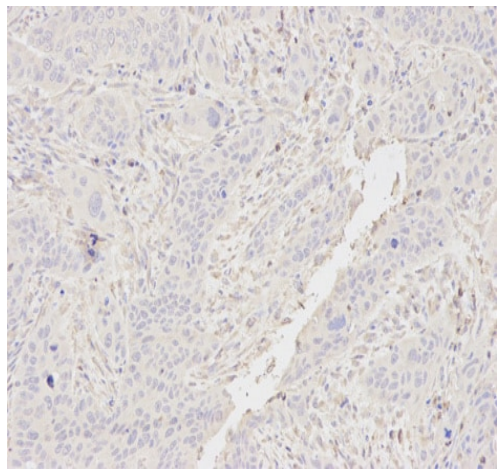
Nucleus.

**Images**



Immunohistochemistry (Formalin/PFA-fixed paraffin-embedded sections) analysis of human breast cancer tissue labelling CSRP1 with ab175319 at 1/400. Magnification: 200x.

Immunohistochemistry (Formalin/PFA-fixed paraffin-embedded sections) - Anti-CSRP1 antibody (ab175319)



Immunohistochemistry (Formalin/PFA-fixed paraffin-embedded sections) analysis of human esophageal cancer tissue labelling CSRP1 with ab175319 at 1/400. Magnification: 200x.

Immunohistochemistry (Formalin/PFA-fixed paraffin-embedded sections) - Anti-CSRP1 antibody (ab175319)

**Please note:** All products are "FOR RESEARCH USE ONLY. NOT FOR USE IN DIAGNOSTIC PROCEDURES"

### **Our Abpromise to you: Quality guaranteed and expert technical support**

---

- Replacement or refund for products not performing as stated on the datasheet
- Valid for 12 months from date of delivery
- Response to your inquiry within 24 hours
- We provide support in Chinese, English, French, German, Japanese and Spanish
- Extensive multi-media technical resources to help you
- We investigate all quality concerns to ensure our products perform to the highest standards

If the product does not perform as described on this datasheet, we will offer a refund or replacement. For full details of the Abpromise, please visit <https://www.abcam.com/abpromise> or contact our technical team.

### **Terms and conditions**

---

- Guarantee only valid for products bought direct from Abcam or one of our authorized distributors