

Product datasheet

Anti-CSTF2T antibody [EPR8924] ab138486

Recombinant RabMAb

[2 References](#) [5 Images](#)

Overview

Product name	Anti-CSTF2T antibody [EPR8924]
Description	Rabbit monoclonal [EPR8924] to CSTF2T
Host species	Rabbit
Tested applications	Suitable for: WB, IHC-P, ICC/IF
Species reactivity	Reacts with: Human
Immunogen	Synthetic peptide within Human CSTF2T aa 300-400. The exact sequence is proprietary.
Positive control	Jurkat, PC-3, and HeLa cell lysates; Human colon adenocarcinoma and lung adenocarcinoma tissues; HeLa cells
General notes	<p>This product is a recombinant monoclonal antibody, which offers several advantages including:</p> <ul style="list-style-type: none">- High batch-to-batch consistency and reproducibility- Improved sensitivity and specificity- Long-term security of supply- Animal-free production <p>For more information see here.</p> <p>Our RabMAb[®] technology is a patented hybridoma-based technology for making rabbit monoclonal antibodies. For details on our patents, please refer to RabMAb[®] patents.</p> <p>Mouse, Rat: We have preliminary internal testing data to indicate this antibody may not react with these species. Please contact us for more information.</p>

Properties

Form	Liquid
Storage instructions	Shipped at 4°C. Store at -20°C.
Storage buffer	pH: 7.2 Preservative: 0.01% Sodium azide Constituents: 9% PBS, 40% Glycerol (glycerin, glycerine), 0.05% BSA, 50% Tissue culture supernatant
Purity	Protein A purified
Clonality	Monoclonal

Clone number EPR8924
Isotype IgG

Applications

The Abpromise guarantee Our **Abpromise guarantee** covers the use of ab138486 in the following tested applications.

The application notes include recommended starting dilutions; optimal dilutions/concentrations should be determined by the end user.

Application	Abreviews	Notes
WB		1/1000 - 1/10000. Predicted molecular weight: 64 kDa.
IHC-P		1/250 - 1/500. Perform heat mediated antigen retrieval with citrate buffer pH 6 before commencing with IHC staining protocol.
ICC/IF		1/250 - 1/500.

Target

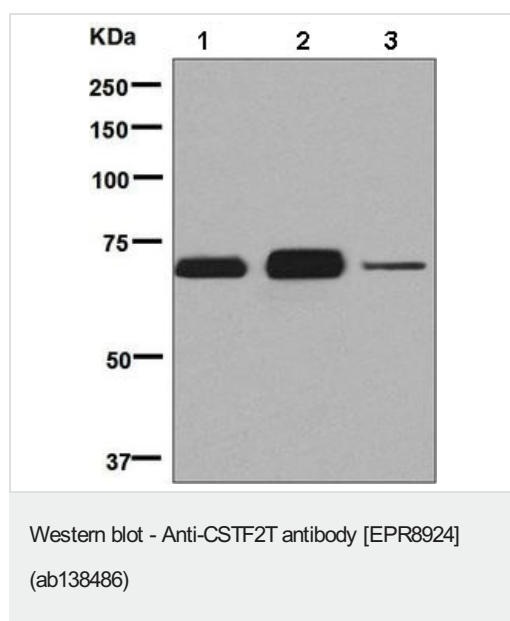
Function May play a significant role in AAUAAA-independent mRNA polyadenylation in germ cells. Directly involved in the binding to pre-mRNAs.

Sequence similarities Contains 1 RRM (RNA recognition motif) domain.

Post-translational modifications Phosphorylated upon DNA damage, probably by ATM or ATR.

Cellular localization Nucleus.

Images



All lanes : Anti-CSTF2T antibody [EPR8924] (ab138486) at 1/1000 dilution

Lane 1 : Jurkat cell lysate

Lane 2 : PC3 cell lysate

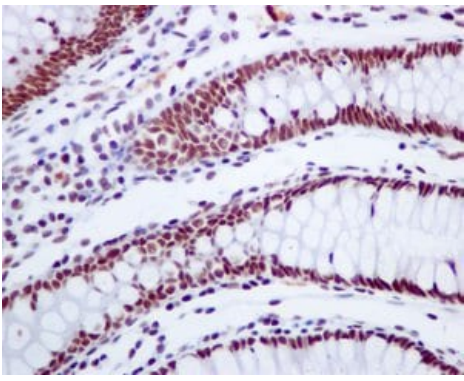
Lane 3 : HeLa cell lysate

Lysates/proteins at 10 µg per lane.

Secondary

All lanes : HRP labelled goat anti-rabbit at 1/2000 dilution

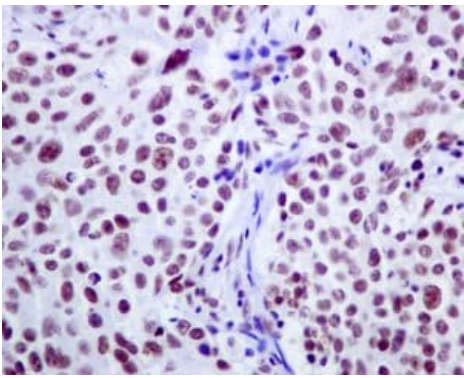
Predicted band size: 64 kDa



Immunohistochemistry (Formalin/PFA-fixed paraffin-embedded sections) - Anti-CSTF2T antibody [EPR8924] (ab138486)

Immunohistochemical analysis of paraffin-embedded Human colon adenocarcinoma tissue labelling CSTF2T with ab138486 at 1/250 dilution.

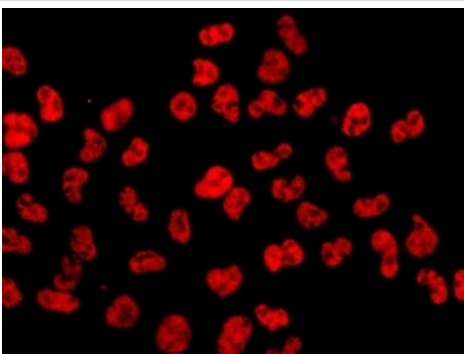
Perform heat mediated antigen retrieval with citrate buffer pH 6 before commencing with IHC staining protocol.



Immunohistochemistry (Formalin/PFA-fixed paraffin-embedded sections) - Anti-CSTF2T antibody [EPR8924] (ab138486)

Immunohistochemical analysis of paraffin-embedded Human lung adenocarcinoma tissue labelling CSTF2T with ab138486 at 1/250 dilution.





Perform heat mediated antigen retrieval with citrate buffer pH 6 before commencing with IHC staining protocol.



Immunocytochemistry/ Immunofluorescence - Anti-CSTF2T antibody [EPR8924] (ab138486)

Immunofluorescent analysis of HeLa cells labelling CSTF2T with ab138486 at 1/250 dilution.

Why choose a recombinant antibody?

 Research with confidence Consistent and reproducible results	 Long-term and scalable supply Recombinant technology
 Success from the first experiment Confirmed specificity	 Ethical standards compliant Animal-free production

Anti-CSTF2T antibody [EPR8924] (ab138486)

Please note: All products are "FOR RESEARCH USE ONLY. NOT FOR USE IN DIAGNOSTIC PROCEDURES"

Our Abpromise to you: Quality guaranteed and expert technical support

- Replacement or refund for products not performing as stated on the datasheet
- Valid for 12 months from date of delivery
- Response to your inquiry within 24 hours
- We provide support in Chinese, English, French, German, Japanese and Spanish
- Extensive multi-media technical resources to help you
- We investigate all quality concerns to ensure our products perform to the highest standards

If the product does not perform as described on this datasheet, we will offer a refund or replacement. For full details of the Abpromise, please visit <https://www.abcam.com/abpromise> or contact our technical team.

Terms and conditions

- Guarantee only valid for products bought direct from Abcam or one of our authorized distributors