

Anti-CTDSP2 antibody [2230C1α] ab50621

[1 Image](#)

Overview

Product name	Anti-CTDSP2 antibody [2230C1α]
Description	Mouse monoclonal [2230C1α] to CTDSP2
Host species	Mouse
Tested applications	Suitable for: WB
Species reactivity	Reacts with: Recombinant fragment
Immunogen	Recombinant fragment, corresponding to near the N terminal amino acids 21-124 of Human CTDSP2
Positive control	recombinant human CTDSP2 fragment
General notes	<p>The Life Science industry has been in the grips of a reproducibility crisis for a number of years. Abcam is leading the way in addressing this with our range of recombinant monoclonal antibodies and knockout edited cell lines for gold-standard validation. Please check that this product meets your needs before purchasing.</p> <p>If you have any questions, special requirements or concerns, please send us an inquiry and/or contact our Support team ahead of purchase. Recommended alternatives for this product can be found below, along with publications, customer reviews and Q&As</p>

Properties

Form	Liquid
Storage instructions	Shipped at 4°C. Store at +4°C short term (1-2 weeks). Upon delivery aliquot. Store at -20°C or -80°C. Avoid freeze / thaw cycle.
Storage buffer	<p>pH: 7.4</p> <p>Preservative: 0.05% Sodium azide</p> <p>Constituents: PBS, 1% BSA</p>
Purity	Protein G purified
Purification notes	ab50621 was purified from culture supernatant of hybridoma cultured in a medium containing bovine IgG-depleted (approximately 95%) fetal bovine serum.
Clonality	Monoclonal
Clone number	2230C1α
Isotype	IgG2b

Applications

The Abpromise guarantee

Our **Abpromise guarantee** covers the use of ab50621 in the following tested applications.

The application notes include recommended starting dilutions; optimal dilutions/concentrations should be determined by the end user.

Application	Abreviews	Notes
WB		1/100. Detects a band of approximately 35 kDa (predicted molecular weight: 31 kDa).

Target

Function

Preferentially catalyzes the dephosphorylation of 'Ser-5' within the tandem 7 residues repeats in the C-terminal domain (CTD) of the largest RNA polymerase II subunit POLR2A. Negatively regulates RNA polymerase II transcription, possibly by controlling the transition from initiation/capping to processive transcript elongation. Recruited by REST to neuronal genes that contain RE-1 elements, leading to neuronal gene silencing in non-neuronal cells. May contribute to the development of sarcomas.

Tissue specificity

Expression is restricted to non-neuronal tissues. Highest expression in pancreas and lowest in liver.

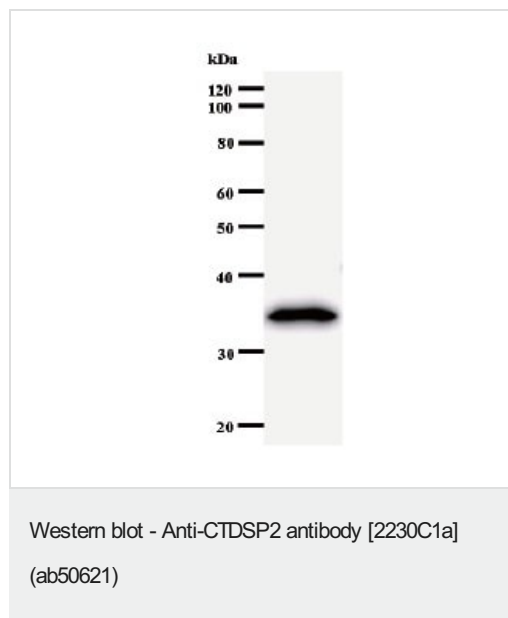
Sequence similarities

Contains 1 FCP1 homology domain.

Cellular localization

Nucleus.

Images



Anti-CTDSP2 antibody [2230C1a] (ab50621) + recombinant CTDSP2 fragment

Predicted band size: 31 kDa

Observed band size: 35 kDa

Please note: All products are "FOR RESEARCH USE ONLY. NOT FOR USE IN DIAGNOSTIC PROCEDURES"

Our Abpromise to you: Quality guaranteed and expert technical support

- Replacement or refund for products not performing as stated on the datasheet
- Valid for 12 months from date of delivery
- Response to your inquiry within 24 hours
- We provide support in Chinese, English, French, German, Japanese and Spanish
- Extensive multi-media technical resources to help you
- We investigate all quality concerns to ensure our products perform to the highest standards

If the product does not perform as described on this datasheet, we will offer a refund or replacement. For full details of the Abpromise, please visit <https://www.abcam.com/abpromise> or contact our technical team.

Terms and conditions

- Guarantee only valid for products bought direct from Abcam or one of our authorized distributors