

Product datasheet

Anti-Cubilin antibody [EPR16259-27] - C-terminal ab191073

Recombinant RabMAb

★★★★★ [2 Abreviews](#) [5 References](#) [3 Images](#)

Overview

Product name	Anti-Cubilin antibody [EPR16259-27] - C-terminal
Description	Rabbit monoclonal [EPR16259-27] to Cubilin - C-terminal
Host species	Rabbit
Tested applications	Suitable for: IHC-P, WB
Species reactivity	Reacts with: Human
Immunogen	Synthetic peptide. This information is proprietary to Abcam and/or its suppliers.
Positive control	Human fetal kidney tissue lysate; Human kidney tissue (normal)
General notes	<p>This product is a recombinant monoclonal antibody, which offers several advantages including:</p> <ul style="list-style-type: none"> - High batch-to-batch consistency and reproducibility - Improved sensitivity and specificity - Long-term security of supply - Animal-free production <p>For more information see here.</p> <p>Our RabMAb[®] technology is a patented hybridoma-based technology for making rabbit monoclonal antibodies. For details on our patents, please refer to RabMAb[®] patents.</p>

Properties

Form	Liquid
Storage instructions	Shipped at 4°C. Store at +4°C short term (1-2 weeks). Upon delivery aliquot. Store at -20°C long term. Avoid freeze / thaw cycle.
Storage buffer	<p>pH: 7.2</p> <p>Preservative: 0.01% Sodium azide</p> <p>Constituents: 59% PBS, 40% Glycerol (glycerin, glycerine), 0.05% BSA</p>
Purity	Protein A purified
Clonality	Monoclonal
Clone number	EPR16259-27
Isotype	IgG

Applications

The Abpromise guarantee

Our **Abpromise guarantee** covers the use of ab191073 in the following tested applications.

The application notes include recommended starting dilutions; optimal dilutions/concentrations should be determined by the end user.

Application	Abreviews	Notes
IHC-P	★★★★★ (2)	1/500. Perform heat mediated antigen retrieval with Tris/EDTA buffer pH 9.0 before commencing with IHC staining protocol.
WB		1/10000 - 1/50000. Detects a band of approximately 399 kDa (predicted molecular weight: 399 kDa).

Target

Function

Cotransporter which plays a role in lipoprotein, vitamin and iron metabolism, by facilitating their uptake. Binds to ALB, MB, Kappa and lambda-light chains, TF, hemoglobin, GC, SCGB1A1, APOA1, high density lipoprotein, and the GIF-cobalamin complex. The binding of all ligands requires calcium. Serves as important transporter in several absorptive epithelia, including intestine, renal proximal tubules and embryonic yolk sac. Interaction with LRP2 mediates its trafficking throughout vesicles and facilitates the uptake of specific ligands like GC, hemoglobin, ALB, TF and SCGB1A1. Interaction with AMN controls its trafficking to the plasma membrane and facilitates endocytosis of ligands. May play an important role in the development of the peri-implantation embryo through internalization of APOA1 and cholesterol. Binds to LGALS3 at the maternal-fetal interface.

Tissue specificity

Expressed in kidney proximal tubule cells, placenta, visceral yolk-sac cells and in absorptive intestinal cells. Expressed in the epithelium of intestine and kidney.

Involvement in disease

Recessive hereditary megaloblastic anemia 1

Sequence similarities

Contains 27 CUB domains.
Contains 7 EGF-like domains.

Domain

The CUB domains 5 to 8 mediate binding to GIF and ALB. CUB domains 1 and 2 mediate interaction with LRP2.

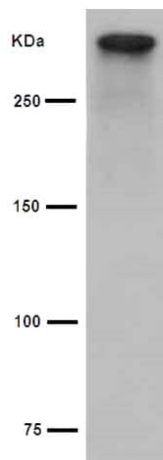
Post-translational modifications

The precursor is cleaved by a trans-Golgi proteinase furin. The result is a propeptide cleaved off. N-glycosylated.

Cellular localization

Endosome membrane. Lysosome membrane. Colocalizes with AMN and LRP2 in the endocytotic apparatus of epithelial cells.

Images



Western blot - Anti-Cubilin antibody [EPR16259-27]
- C-terminal (ab191073)

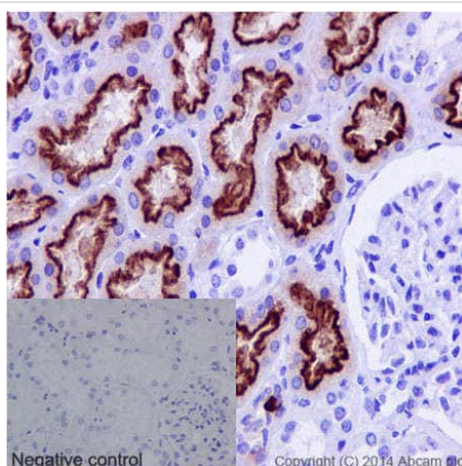
Anti-Cubilin antibody [EPR16259-27] - C-terminal (ab191073) at
1/50000 dilution + Human fetal kidney tissue lysate at 20 µg

Secondary

Goat Anti-Rabbit IgG, (H+L), Peroxidase conjugated at 1/1000
dilution

Predicted band size: 399 kDa

Observed band size: 399 kDa



Immunohistochemistry (Formalin/PFA-fixed paraffin-
embedded sections) - Anti-Cubilin antibody
[EPR16259-27] - C-terminal (ab191073)

Immunohistochemical analysis of paraffin-embedded Human kidney
tissue labeling Cubilin with ab191073 at a 1/500 dilution.

Secondary antibody Goat Anti-Rabbit IgG, (H+L), Peroxidase
conjugated at a 1/1000 dilution. Counter stain Hematoxylin.

Negative control also shown.

Perform heat mediated antigen retrieval with EDTA buffer pH 9
before commencing with IHC staining protocol.

Why choose a recombinant antibody?



Research with confidence
Consistent and reproducible results



Long-term and scalable supply
Recombinant technology



Success from the first experiment
Confirmed specificity



Ethical standards compliant
Animal-free production

Anti-Cubilin antibody [EPR16259-27] - C-terminal
(ab191073)

Please note: All products are "FOR RESEARCH USE ONLY. NOT FOR USE IN DIAGNOSTIC PROCEDURES"

Our Abpromise to you: Quality guaranteed and expert technical support

- Replacement or refund for products not performing as stated on the datasheet
- Valid for 12 months from date of delivery
- Response to your inquiry within 24 hours
- We provide support in Chinese, English, French, German, Japanese and Spanish
- Extensive multi-media technical resources to help you
- We investigate all quality concerns to ensure our products perform to the highest standards

If the product does not perform as described on this datasheet, we will offer a refund or replacement. For full details of the Abpromise, please visit <https://www.abcam.com/abpromise> or contact our technical team.

Terms and conditions

- Guarantee only valid for products bought direct from Abcam or one of our authorized distributors