


Anti-CUEDC2 antibody ab109649

4 Images

Overview

Product name	Anti-CUEDC2 antibody
Description	Rabbit polyclonal to CUEDC2
Host species	Rabbit
Tested applications	Suitable for: WB, IHC-P, ICC
Species reactivity	Reacts with: Human Predicted to work with: Mouse, Rat 
Immunogen	19 amino acid peptide from near the carboxy terminus of Human CUEDC2 (Q9H467)
Positive control	HeLa whole cell lysate (ab150035) Human spleen or tonsil tissue HeLa cells
General notes	<p>The Life Science industry has been in the grips of a reproducibility crisis for a number of years. Abcam is leading the way in addressing this with our range of recombinant monoclonal antibodies and knockout edited cell lines for gold-standard validation. Please check that this product meets your needs before purchasing.</p> <p>If you have any questions, special requirements or concerns, please send us an inquiry and/or contact our Support team ahead of purchase. Recommended alternatives for this product can be found below, along with publications, customer reviews and Q&As</p>

Properties

Form	Liquid
Storage instructions	Shipped at 4°C. Store at +4°C short term (1-2 weeks). Upon delivery aliquot. Store at -20°C long term.
Storage buffer	pH: 7.4 Preservative: 0.02% Sodium azide Constituent: PBS
Purity	Immunogen affinity purified
Clonality	Polyclonal
Isotype	IgG

Applications

The Abpromise guarantee

Our **Abpromise guarantee** covers the use of ab109649 in the following tested applications.

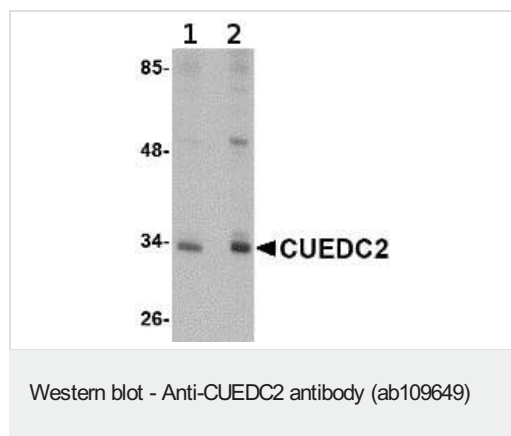
The application notes include recommended starting dilutions; optimal dilutions/concentrations should be determined by the end user.

Application	Abreviews	Notes
WB		Use a concentration of 1 - 2 µg/ml. Predicted molecular weight: 32 kDa.
IHC-P		Use a concentration of 5 µg/ml. Perform heat mediated antigen retrieval with citrate buffer pH 6 before commencing with IHC staining protocol.
ICC		Use at an assay dependent concentration.

Target

Function	Controls PGR and ESR1 protein levels through their targeting for ubiquitination and subsequent proteasomal degradation.
Sequence similarities	Belongs to the CUEDC2 family. Contains 1 CUE domain.
Domain	The CUE domain mediates interaction with PGR and ESR1.
Cellular localization	Cytoplasm. Nucleus.

Images

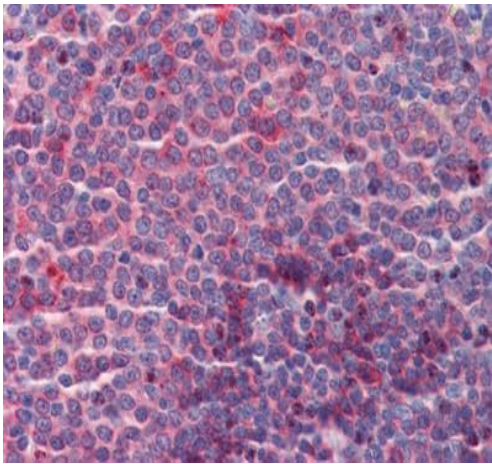


Lane 1 : Anti-CUEDC2 antibody (ab109649) at 1 µg/ml

Lane 2 : Anti-CUEDC2 antibody (ab109649) at 2 µg/ml

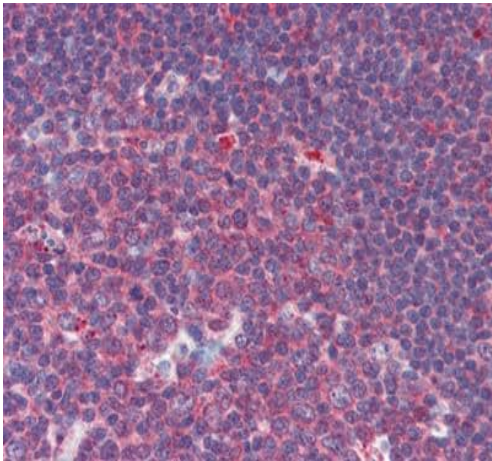
All lanes : HeLa cell lysate

Predicted band size: 32 kDa



Immunohistochemistry (Formalin/PFA-fixed paraffin-embedded sections) - Anti-CUEDC2 antibody (ab109649)

ab109649, at 5µg/ml, staining Human CUEDC2 in spleen, using Immunohistochemistry, Formalin/PFA-fixed paraffin-embedded tissue.



Immunohistochemistry (Formalin/PFA-fixed paraffin-embedded sections) - Anti-CUEDC2 antibody (ab109649)

ab109649, at 5µg/ml, staining Human CUEDC2 in tonsil, using Immunohistochemistry, Formalin/PFA-fixed paraffin-embedded tissue.



Immunocytochemistry image of HeLa cells, using ab109649 at 5 $\mu\text{g/ml}$.

Immunocytochemistry - Anti-CUEDC2 antibody
(ab109649)

Please note: All products are "FOR RESEARCH USE ONLY. NOT FOR USE IN DIAGNOSTIC PROCEDURES"

Our Abpromise to you: Quality guaranteed and expert technical support

- Replacement or refund for products not performing as stated on the datasheet
- Valid for 12 months from date of delivery
- Response to your inquiry within 24 hours
- We provide support in Chinese, English, French, German, Japanese and Spanish
- Extensive multi-media technical resources to help you
- We investigate all quality concerns to ensure our products perform to the highest standards

If the product does not perform as described on this datasheet, we will offer a refund or replacement. For full details of the Abpromise, please visit <https://www.abcam.com/abpromise> or contact our technical team.

Terms and conditions

- Guarantee only valid for products bought direct from Abcam or one of our authorized distributors