

## Product datasheet

### Anti-CUL-4A + CUL-4B antibody [EPR3200] ab76470

Recombinant RabMAb

[6 References](#) [3 Images](#)

#### Overview

<b>Product name</b>	Anti-CUL-4A + CUL-4B antibody [EPR3200]
<b>Description</b>	Rabbit monoclonal [EPR3200] to CUL-4A + CUL-4B
<b>Host species</b>	Rabbit
<b>Specificity</b>	Due to the close homology between Cullin 4A and 4B this antibody is likely to react with both forms.
<b>Tested applications</b>	<b>Suitable for:</b> WB, IHC-P <b>Unsuitable for:</b> ICC/IF or IP
<b>Species reactivity</b>	<b>Reacts with:</b> Mouse, Rat, Human
<b>Immunogen</b>	Synthetic peptide within Human CUL-4A + CUL-4B aa 850-950. The exact sequence is proprietary.
<b>Positive control</b>	Fetal uterus, HeLa, A375 and fetal testis lysates and human brain tissue
<b>General notes</b>	This product is a recombinant monoclonal antibody, which offers several advantages including: <ul style="list-style-type: none"> <li>- High batch-to-batch consistency and reproducibility</li> <li>- Improved sensitivity and specificity</li> <li>- Long-term security of supply</li> <li>- Animal-free production</li> </ul> For more information <a href="#">see here</a> . Our RabMAb <sup>®</sup> technology is a patented hybridoma-based technology for making rabbit monoclonal antibodies. For details on our patents, please refer to <a href="#">RabMAb<sup>®</sup> patents</a> .

#### Properties

<b>Form</b>	Liquid
<b>Storage instructions</b>	Shipped at 4°C. Upon delivery aliquot and store at -20°C. Avoid freeze / thaw cycles.
<b>Storage buffer</b>	pH: 7.20 Preservative: 0.05% Sodium azide Constituents: 0.1% BSA, 40% Glycerol (glycerin, glycerine), 9.85% Tris glycine, 50% Tissue culture supernatant
<b>Purity</b>	Protein A purified
<b>Clonality</b>	Monoclonal

Clone number                      EPR3200

Isotype                               IgG

## Applications

**The Abpromise guarantee**           Our **Abpromise guarantee** covers the use of ab76470 in the following tested applications. The application notes include recommended starting dilutions; optimal dilutions/concentrations should be determined by the end user.

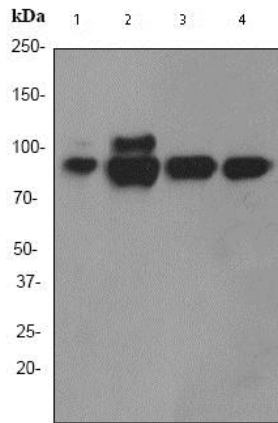
Application	Abreviews	Notes
WB		1/2000 - 1/10000. Detects a band of approximately 88, 102 kDa (predicted molecular weight: 102 kDa).
IHC-P		1/100 - 1/250. Perform heat mediated antigen retrieval before commencing with IHC staining protocol. Use of HRP-conjugated or polymerized HRP secondary antibodies, stronger signals have been found using the polymerized HRP secondary.

**Application notes**                      Is unsuitable for ICC/IF or IP.

## Target

**Relevance**                               Core component of multiple cullin-RING-based E3 ubiquitin-protein ligase complexes which mediate the ubiquitination and subsequent proteasomal degradation of target proteins. As a scaffold protein may contribute to catalysis through positioning of the substrate and the ubiquitin-conjugating enzyme. The E3 ubiquitin-protein ligase activity of the complex is dependent on the neddylation of the cullin subunit and is inhibited by the association of the deneddylated cullin subunit with TIP120A/CAND1. The functional specificity of the E3 ubiquitin-protein ligase complex depends on the variable substrate recognition component.

## Images



Western blot - Anti-CUL-4A + CUL-4B antibody  
[EPR3200] (ab76470)

**All lanes :** Anti-CUL-4A + CUL-4B antibody [EPR3200] (ab76470)  
at 1/5000 dilution

**Lane 1 :** Fetal uterus lysate

**Lane 2 :** HeLa lysate

**Lane 3 :** A375 lysate

**Lane 4 :** Fetal testis lysate

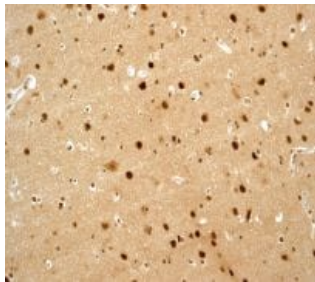
Lysates/proteins at 10 µg per lane.

### Secondary

**All lanes :** HRP labelled goat anti-rabbit at 1/2000 dilution

**Predicted band size:** 102 kDa

**Observed band size:** 102,88 kDa



Immunohistochemistry (Formalin/PFA-fixed paraffin-  
embedded sections) - Anti-CUL-4A + CUL-4B  
antibody [EPR3200] (ab76470)

ab76470 at 1/100 dilution staining Cullin 4B in human brain tissue,  
using a HRP/AP polymerized secondary antibody.

Perform heat mediated antigen retrieval before commencing with  
IHC staining protocol.

### Why choose a recombinant antibody?



**Research with  
confidence**  
Consistent and  
reproducible results



**Long-term and  
scalable supply**  
Recombinant  
technology



**Success from the  
first experiment**  
Confirmed  
specificity



**Ethical standards  
compliant**  
Animal-free  
production

Anti-CUL-4A + CUL-4B antibody [EPR3200]  
(ab76470)

### **Our Abpromise to you: Quality guaranteed and expert technical support**

---

- Replacement or refund for products not performing as stated on the datasheet
- Valid for 12 months from date of delivery
- Response to your inquiry within 24 hours
  
- We provide support in Chinese, English, French, German, Japanese and Spanish
- Extensive multi-media technical resources to help you
- We investigate all quality concerns to ensure our products perform to the highest standards

If the product does not perform as described on this datasheet, we will offer a refund or replacement. For full details of the Abpromise, please visit <https://www.abcam.com/abpromise> or contact our technical team.

### **Terms and conditions**

---

- Guarantee only valid for products bought direct from Abcam or one of our authorized distributors