






## Product datasheet

### Anti-Cullin 7/CUL-7 antibody ab115304

[1 Image](#)

#### Overview

<b>Product name</b>	Anti-Cullin 7/CUL-7 antibody
<b>Description</b>	Rabbit polyclonal to Cullin 7/CUL-7
<b>Host species</b>	Rabbit
<b>Tested applications</b>	<b>Suitable for:</b> IHC-P
<b>Species reactivity</b>	<b>Reacts with:</b> Human <b>Predicted to work with:</b> Rat, Horse, Cow, Pig, Orangutan 
<b>Immunogen</b>	Synthetic peptide corresponding to Human Cullin 7/CUL-7 aa 1650-1750 (C terminal) conjugated to keyhole limpet haemocyanin. <a href="#"> Run BLAST with </a> <a href="#"> Run BLAST with </a>
<b>Positive control</b>	Human Brain, Cortex tissue
<b>General notes</b>	<p>The Life Science industry has been in the grips of a reproducibility crisis for a number of years. Abcam is leading the way in addressing this with our range of recombinant monoclonal antibodies and knockout edited cell lines for gold-standard validation. Please check that this product meets your needs before purchasing.</p> <p>If you have any questions, special requirements or concerns, please send us an inquiry and/or contact our Support team ahead of purchase. Recommended alternatives for this product can be found below, along with publications, customer reviews and Q&amp;As</p>

#### Properties

<b>Form</b>	Liquid
<b>Storage instructions</b>	Shipped at 4°C. Store at +4°C short term (1-2 weeks). Upon delivery aliquot. Store at -20°C long term.
<b>Storage buffer</b>	pH: 6 Preservative: 0.01% Sodium azide Constituent: 99% Whole serum
<b>Purity</b>	Whole antiserum
<b>Purification notes</b>	Delipidation and defibrination
<b>Clonality</b>	Polyclonal
<b>Isotype</b>	IgG

## Applications

### The Abpromise guarantee

Our **Abpromise guarantee** covers the use of ab115304 in the following tested applications.

The application notes include recommended starting dilutions; optimal dilutions/concentrations should be determined by the end user.

Application	Abreviews	Notes
IHC-P		1/500. Perform heat mediated antigen retrieval with citrate buffer pH 6 before commencing with IHC staining protocol.

## Target

### Function

Component of a probable SCF-like E3 ubiquitin-protein ligase complex, which mediates the ubiquitination and subsequent proteasomal degradation of target proteins. Probably plays a role in the degradation of proteins involved in endothelial proliferation and/or differentiation (By similarity). Seems not to promote polyubiquitination and proteasomal degradation of TP53. In vitro, complexes of CUL7 with either CUL9 or FBXW8 or TP53 contain E3 ubiquitin-protein ligase activity.

### Tissue specificity

Highly expressed in fetal kidney and adult skeletal muscle. Also abundant in fetal brain, as well as in adult pancreas, kidney, placenta and heart. Detected in trophoblasts, lymphoblasts, osteoblasts, chondrocytes and skin fibroblasts.

### Pathway

Protein modification; protein ubiquitination.

### Involvement in disease

Defects in CUL7 are the cause of 3M syndrome type 1 (3M1) [MIM:273750]. An autosomal recessive disorder characterized by severe pre- and postnatal growth retardation, facial dysmorphism, large head circumference, and normal intelligence and endocrine function. Skeletal changes include long slender tubular bones and tall vertebral bodies.

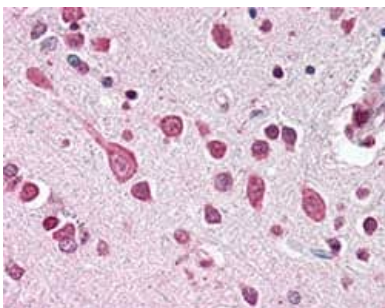
### Sequence similarities

Belongs to the cullin family.  
Contains 1 DOC domain.

### Cellular localization

Cytoplasm.

## Images



ab115304, at 1/500 dilution, staining Cullin 7/CUL-7 in formalin-fixed, paraffin-embedded Human Brain, Cortex tissue by Immunohistochemistry, using a biotinylated goat anti-rabbit IgG secondary antibody, alkaline phosphatase-streptavidin and chromogen.

Immunohistochemistry (Formalin/PFA-fixed paraffin-embedded sections) - Anti-Cullin 7/CUL-7 antibody (ab115304)

### **Our Abpromise to you: Quality guaranteed and expert technical support**

---

- Replacement or refund for products not performing as stated on the datasheet
- Valid for 12 months from date of delivery
- Response to your inquiry within 24 hours
- We provide support in Chinese, English, French, German, Japanese and Spanish
- Extensive multi-media technical resources to help you
- We investigate all quality concerns to ensure our products perform to the highest standards

If the product does not perform as described on this datasheet, we will offer a refund or replacement. For full details of the Abpromise, please visit <https://www.abcam.com/abpromise> or contact our technical team.

### **Terms and conditions**

---

- Guarantee only valid for products bought direct from Abcam or one of our authorized distributors