

## Product datasheet

### Anti-Cullin 7/CUL-7 antibody ab96861

★ ★ ★ ★ ★ [1 Abreviews](#) [2 References](#) [1 Image](#)

#### Overview

|                            |   |
|----------------------------|---|
| <b>Product name</b>        | Anti-Cullin 7/CUL-7 antibody  |
| <b>Description</b>         | Rabbit polyclonal to Cullin 7/CUL-7   |
| <b>Host species</b>        | Rabbit  |
| <b>Tested applications</b> | <b>Suitable for:</b> WB   |
| <b>Species reactivity</b>  | <b>Reacts with:</b> Human   |
| <b>Immunogen</b>           | Synthetic peptide corresponding to Human Cullin 7/CUL-7 aa 1370-1679.   |
| <b>Positive control</b>    | H1299, HeLa, HepG2, Molt-4, Raji  |
| <b>General notes</b>       | <p>The Life Science industry has been in the grips of a reproducibility crisis for a number of years. Abcam is leading the way in addressing this with our range of recombinant monoclonal antibodies and knockout edited cell lines for gold-standard validation. Please check that this product meets your needs before purchasing.</p> <p>If you have any questions, special requirements or concerns, please send us an inquiry and/or contact our Support team ahead of purchase. Recommended alternatives for this product can be found below, along with publications, customer reviews and Q&amp;As</p> |

#### Properties

|                             |  |
|-----------------------------|--|
| <b>Form</b>                 | Liquid   |
| <b>Storage instructions</b> | Shipped at 4°C. Upon delivery aliquot. Store at -20°C or -80°C. Avoid freeze / thaw cycle.   |
| <b>Storage buffer</b>       | <p>pH: 7.00</p> <p>Preservative: 0.01% Thimerosal (merthiolate)</p> <p>Constituents: 1.21% Tris, 0.75% Glycine, 20% Glycerol (glycerin, glycerine)</p> |
| <b>Purity</b>               | Immunogen affinity purified  |
| <b>Clonality</b>            | Polyclonal   |
| <b>Isotype</b>              | IgG  |

#### Applications

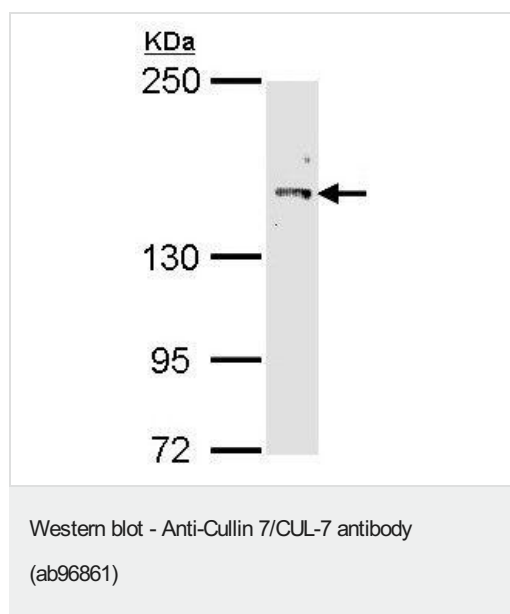
**The Abpromise guarantee** Our **Abpromise guarantee** covers the use of ab96861 in the following tested applications. The application notes include recommended starting dilutions; optimal dilutions/concentrations should be determined by the end user.

| Application | Abreviews | Notes  |
|-------------|-----------|--|
| WB          |           | 1/1000. Predicted molecular weight: 191 kDa. |

## Target

|                               |  |
|-------------------------------|--|
| <b>Function</b>               | Component of a probable SCF-like E3 ubiquitin-protein ligase complex, which mediates the ubiquitination and subsequent proteasomal degradation of target proteins. Probably plays a role in the degradation of proteins involved in endothelial proliferation and/or differentiation (By similarity). Seems not to promote polyubiquitination and proteasomal degradation of TP53. In vitro, complexes of CUL7 with either CUL9 or FBXW8 or TP53 contain E3 ubiquitin-protein ligase activity. |
| <b>Tissue specificity</b>     | Highly expressed in fetal kidney and adult skeletal muscle. Also abundant in fetal brain, as well as in adult pancreas, kidney, placenta and heart. Detected in trophoblasts, lymphoblasts, osteoblasts, chondrocytes and skin fibroblasts.  |
| <b>Pathway</b>                | Protein modification; protein ubiquitination.  |
| <b>Involvement in disease</b> | Defects in CUL7 are the cause of 3M syndrome type 1 (3M1) [MIM:273750]. An autosomal recessive disorder characterized by severe pre- and postnatal growth retardation, facial dysmorphism, large head circumference, and normal intelligence and endocrine function. Skeletal changes include long slender tubular bones and tall vertebral bodies.  |
| <b>Sequence similarities</b>  | Belongs to the cullin family.<br>Contains 1 DOC domain.  |
| <b>Cellular localization</b>  | Cytoplasm.   |

## Images



Anti-Cullin 7/CUL-7 antibody (ab96861) at 1/1000 dilution + Molt-4 cell lysate at 30 µg

**Predicted band size:** 191 kDa

A 7.5% SDS-PAGE gel was used.

**Please note:** All products are "FOR RESEARCH USE ONLY. NOT FOR USE IN DIAGNOSTIC PROCEDURES"

### **Our Abpromise to you: Quality guaranteed and expert technical support**

---

- Replacement or refund for products not performing as stated on the datasheet
- Valid for 12 months from date of delivery
- Response to your inquiry within 24 hours
  
- We provide support in Chinese, English, French, German, Japanese and Spanish
- Extensive multi-media technical resources to help you
- We investigate all quality concerns to ensure our products perform to the highest standards

If the product does not perform as described on this datasheet, we will offer a refund or replacement. For full details of the Abpromise, please visit <https://www.abcam.com/abpromise> or contact our technical team.

### **Terms and conditions**

---

- Guarantee only valid for products bought direct from Abcam or one of our authorized distributors