




Product datasheet

Anti-CWC15 antibody ab188345

3 Images

Overview

| | |
|----------------------------|---|
| Product name | Anti-CWC15 antibody |
| Description | Rabbit polyclonal to CWC15 |
| Host species | Rabbit |
| Tested applications | Suitable for: ICC/IF, WB, IHC-P |
| Species reactivity | Reacts with: Human Predicted to work with: Mouse, Rat  |
| Immunogen | Recombinant fragment corresponding to Human CWC15 aa 1-100. Database link: Q9P013  Run BLAST with  Run BLAST with |
| Positive control | WB: Human cell line RT4, Human cell line U-251 MG sp, Human plasma (IgG/HSA depleted), Human liver tissue and Human tonsil tissue lysates. IHC-P: Human thyroid gland. ICC/IF: U-2 OS cells. |
| General notes | <p>The Life Science industry has been in the grips of a reproducibility crisis for a number of years. Abcam is leading the way in addressing this with our range of recombinant monoclonal antibodies and knockout edited cell lines for gold-standard validation. Please check that this product meets your needs before purchasing.</p> <p>If you have any questions, special requirements or concerns, please send us an inquiry and/or contact our Support team ahead of purchase. Recommended alternatives for this product can be found below, along with publications, customer reviews and Q&As</p> |

Properties

| | |
|-----------------------------|---|
| Form | Liquid |
| Storage instructions | Shipped at 4°C. Store at +4°C short term (1-2 weeks). Upon delivery aliquot. Store at -20°C long term. Avoid freeze / thaw cycle. |
| Storage buffer | pH: 7.20 Preservative: 0.02% Sodium azide Constituents: 40% Glycerol (glycerin, glycerine), 59% PBS |
| Purity | Immunogen affinity purified |
| Clonality | Polyclonal |
| Isotype | IgG |

Applications

The Abpromise guarantee

Our **Abpromise guarantee** covers the use of ab188345 in the following tested applications.

The application notes include recommended starting dilutions; optimal dilutions/concentrations should be determined by the end user.

| Application | Abreviews | Notes |
|-------------|-----------|--|
| ICC/IF | | Use a concentration of 0.25 - 2 µg/ml. |
| WB | | Use a concentration of 0.04 - 0.4 µg/ml. Predicted molecular weight: 27 kDa. |
| IHC-P | | 1/500 - 1/1000. Perform heat mediated antigen retrieval with citrate buffer pH 6 before commencing with IHC staining protocol. |

Target

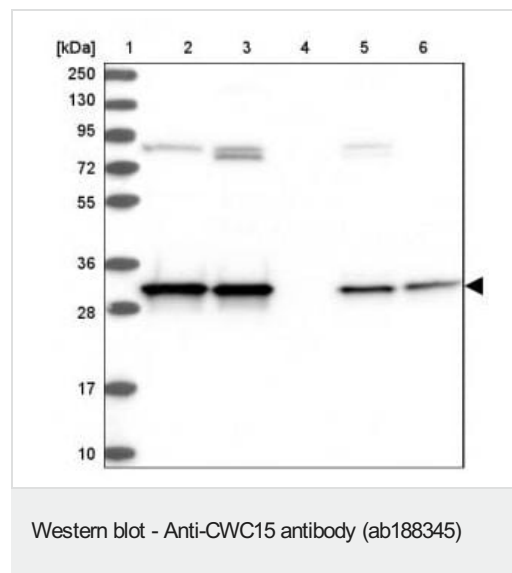
Relevance

Component of the PRP19-CDC5L complex that forms an integral part of the spliceosome and is required for activating pre-mRNA splicing. Belongs to the CWC15 family.

Cellular localization

Nucleus

Images



All lanes : Anti-CWC15 antibody (ab188345) at 1/100 dilution

Lane 2 : RT4 cell lysate

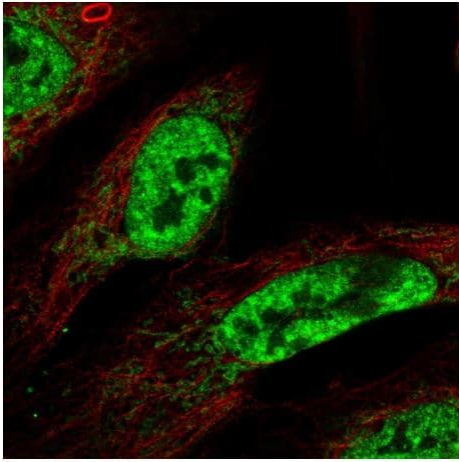
Lane 3 : U251 MG sp cell lysate

Lane 4 : Human plasma (IgG/HSA depleted)

Lane 5 : Human liver tissue lysate

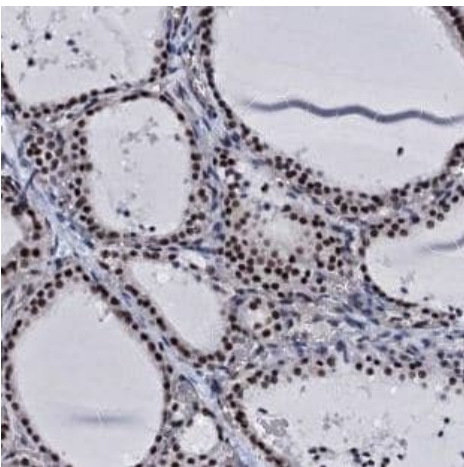
Lane 6 : Human tonsil tissue lysate

Predicted band size: 27 kDa



Immunocytochemistry/ Immunofluorescence - Anti-CWC15 antibody (ab188345)

U-2 OS cells stained for CWC15 (green) using ab188345 at 2 µg/ml in ICC/IF.



Immunohistochemistry (Formalin/PFA-fixed paraffin-embedded sections) - Anti-CWC15 antibody (ab188345)

Paraffin embedded human thyroid gland tissue stained for CWC15 using ab188345 at 1/1000 dilution in immunohistochemical analysis.

Heat mediated antigen retrieval was performed with citrate buffer pH 6 before the IHC staining protocol.

Please note: All products are "FOR RESEARCH USE ONLY. NOT FOR USE IN DIAGNOSTIC PROCEDURES"

Our Abpromise to you: Quality guaranteed and expert technical support

- Replacement or refund for products not performing as stated on the datasheet
- Valid for 12 months from date of delivery

- Response to your inquiry within 24 hours
- We provide support in Chinese, English, French, German, Japanese and Spanish
- Extensive multi-media technical resources to help you
- We investigate all quality concerns to ensure our products perform to the highest standards

If the product does not perform as described on this datasheet, we will offer a refund or replacement. For full details of the Abpromise, please visit <https://www.abcam.com/abpromise> or contact our technical team.

Terms and conditions

- Guarantee only valid for products bought direct from Abcam or one of our authorized distributors