




Product datasheet

Anti-Cx30 antibody [16H9L8] ab200866

Recombinant

★★★★★ [1 Abreviews](#) [1 References](#) [4 Images](#)

Overview

Product name	Anti-Cx30 antibody [16H9L8]
Description	Rabbit monoclonal [16H9L8] to Cx30
Host species	Rabbit
Tested applications	Suitable for: IHC-P, WB, ICC/IF
Species reactivity	Reacts with: Mouse, Human Predicted to work with: Cow 
Immunogen	Synthetic peptide corresponding to Mouse Cx30 aa 200 to the C-terminus. Database link: P70689  Run BLAST with  Run BLAST with
Positive control	WB: Adult mouse thalamus lysates. IF: Log phase Caco-2 cells. IHC: Adult mouse thalamus tissue .

Properties

Form	Liquid
Storage instructions	Shipped at 4°C. Store at +4°C short term (1-2 weeks). Upon delivery aliquot. Store at -20°C long term. Avoid freeze / thaw cycle.
Storage buffer	Preservative: 0.09% Sodium azide Constituent: PBS
Purity	Protein A purified
Clonality	Monoclonal
Clone number	16H9L8
Isotype	IgG

Applications

The Abpromise guarantee Our **Abpromise guarantee** covers the use of ab200866 in the following tested applications. The application notes include recommended starting dilutions; optimal dilutions/concentrations should be determined by the end user.

Application	Abreviews	Notes
IHC-P		Use a concentration of 0.5 - 1 µg/ml.
WB		Use a concentration of 1 - 3 µg/ml. Predicted molecular weight: 30 kDa.
ICC/IF		Use a concentration of 0.5 - 1 µg/ml.

Target

Function

One gap junction consists of a cluster of closely packed pairs of transmembrane channels, the connexons, through which materials of low MW diffuse from one cell to a neighboring cell.

Involvement in disease

Defects in GJB6 are the cause of ectodermal dysplasia type 2 (ED2) [MIM:129500]; also known as Clouston syndrome. Ectodermal dysplasia defines a heterogeneous group of disorders due to abnormal development of two or more ectodermal structures. ED2 is an autosomal dominant condition characterized by atrichosis, nail hypoplasia and deformities, hyperpigmentation of the skin, normal teeth, normal sweat and sebaceous gland function. Palmoplantar hyperkeratosis is a frequent features. Hearing impairment has been detected in few cases of ED2.

Defects in GJB6 are the cause of deafness autosomal recessive type 1B (DFNB1B) [MIM:612645]. DFNB1B is a form of sensorineural hearing loss. Sensorineural deafness results from damage to the neural receptors of the inner ear, the nerve pathways to the brain, or the area of the brain that receives sound information.

Defects in GJB6 are the cause of deafness autosomal dominant type 3B (DFNA3B) [MIM:612643].

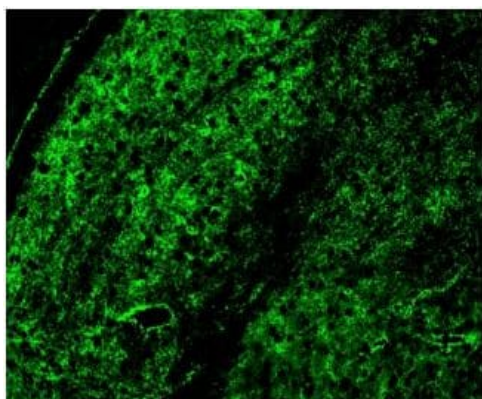
Sequence similarities

Belongs to the connexin family. Beta-type (group I) subfamily.

Cellular localization

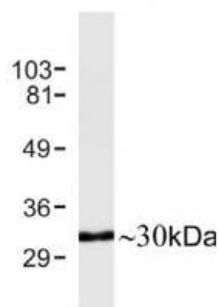
Cell membrane. Cell junction > gap junction.

Images



Immunohistochemical analysis of adult mouse thalamus tissue labeling Cx30 with ab200866 at 0.5 µg/ml.

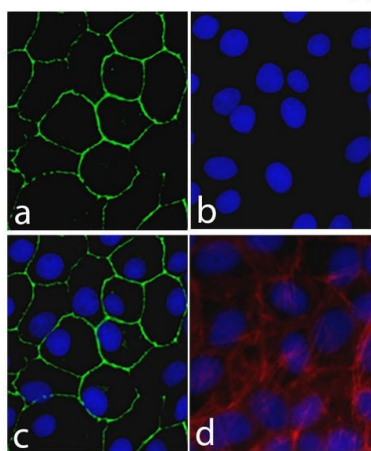
Immunohistochemistry (Formalin/PFA-fixed paraffin-embedded sections) - Anti-Cx30 antibody [16H9L8] (ab200866)



Western blot - Anti-Cx30 antibody [16H9L8]
(ab200866)

Anti-Cx30 antibody [16H9L8] (ab200866) at 1 µg/ml + Adult mouse thalamus lysate

Predicted band size: 30 kDa



Immunocytochemistry/ Immunofluorescence - Anti-Cx30 antibody [16H9L8] (ab200866)

Immunofluorescence analysis of 4% paraformaldehyde-fixed log phase Caco-2 cells labeling Cx30 with ab200866 at 1/500 dilution. Alexa Fluor® 488 Goat Anti-Rabbit IgG Secondary Antibody at a dilution of 1/400 was used as the secondary antibody (panel a; green). Slide is counter stained with Dapi (panel b: blue). Panel c is a merged image showing cell junction localization and panel d is a no primary antibody control. The images were captured using a Nikon microscope at 20X magnification.

Why choose a
recombinant antibody?



Research with confidence
Consistent and reproducible results



Long-term and scalable supply
Recombinant technology



Success from the first experiment
Confirmed specificity



Ethical standards compliant
Animal-free production

Anti-Cx30 antibody [16H9L8] (ab200866)

Please note: All products are "FOR RESEARCH USE ONLY. NOT FOR USE IN DIAGNOSTIC PROCEDURES"

Our Abpromise to you: Quality guaranteed and expert technical support

- Replacement or refund for products not performing as stated on the datasheet
- Valid for 12 months from date of delivery
- Response to your inquiry within 24 hours

- We provide support in Chinese, English, French, German, Japanese and Spanish
- Extensive multi-media technical resources to help you
- We investigate all quality concerns to ensure our products perform to the highest standards

If the product does not perform as described on this datasheet, we will offer a refund or replacement. For full details of the Abpromise, please visit <https://www.abcam.com/abpromise> or contact our technical team.

Terms and conditions

- Guarantee only valid for products bought direct from Abcam or one of our authorized distributors