

## Product datasheet

# Anti-CXCL1/GRO alpha antibody ab86436

★★★★★ [1 Abreviews](#) [37 References](#) [2 Images](#)

### Overview

---

<b>Product name</b>	Anti-CXCL1/GRO alpha antibody
<b>Description</b>	Rabbit polyclonal to CXCL1/GRO alpha
<b>Host species</b>	Rabbit
<b>Specificity</b>	The immunogen for ab86436 has >90% homology to mouse GRO beta
<b>Tested applications</b>	<b>Suitable for:</b> WB
<b>Species reactivity</b>	<b>Reacts with:</b> Mouse, Human, Recombinant fragment
<b>Immunogen</b>	Synthetic peptide surrounding amino acid 78 of mouse GRO alpha.
<b>General notes</b>	<p>This product is manufactured by BioVision, an Abcam company and was previously called 5212 KC Antibody.</p> <p>The Life Science industry has been in the grips of a reproducibility crisis for a number of years. Abcam is leading the way in addressing this with our range of recombinant monoclonal antibodies and knockout edited cell lines for gold-standard validation. Please check that this product meets your needs before purchasing.</p> <p>If you have any questions, special requirements or concerns, please send us an inquiry and/or contact our Support team ahead of purchase. Recommended alternatives for this product can be found below, along with publications, customer reviews and Q&amp;As</p>

### Properties

---

<b>Form</b>	Liquid
<b>Storage instructions</b>	Shipped at 4°C. Upon delivery aliquot and store at -20°C or -80°C. Avoid repeated freeze / thaw cycles.
<b>Storage buffer</b>	Preservative: 0.01% Thimerosal (merthiolate) Constituents: 0.5% BSA, 30% Glycerol (glycerin, glycerine)
<b>Purity</b>	Immunogen affinity purified
<b>Clonality</b>	Polyclonal
<b>Isotype</b>	IgG

### Applications

---

## The Abpromise guarantee

Our **Abpromise guarantee** covers the use of ab86436 in the following tested applications.

The application notes include recommended starting dilutions; optimal dilutions/concentrations should be determined by the end user.

Application	Abreviews	Notes
WB		Use a concentration of 0.5 - 4 µg/ml. Detects a band of approximately 9 kDa (predicted molecular weight: 11 kDa).

## Target

### Function

Has chemotactic activity for neutrophils. May play a role in inflammation and exerts its effects on endothelial cells in an autocrine fashion. In vitro, the processed forms GRO-alpha(4-73), GRO-alpha(5-73) and GRO-alpha(6-73) show a 30-fold higher chemotactic activity.

### Sequence similarities

Belongs to the intercrine alpha (chemokine CxC) family.

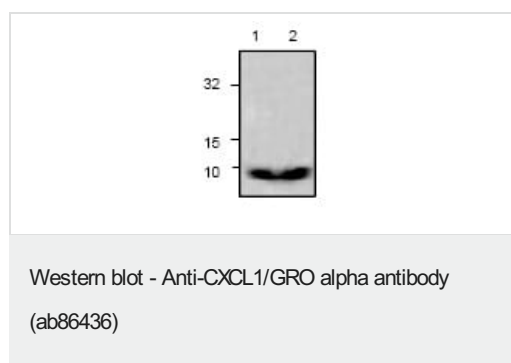
### Post-translational modifications

N-terminal processed forms GRO-alpha(4-73), GRO-alpha(5-73) and GRO-alpha(6-73) are produced by proteolytic cleavage after secretion from peripheral blood monocytes.

### Cellular localization

Secreted.

## Images



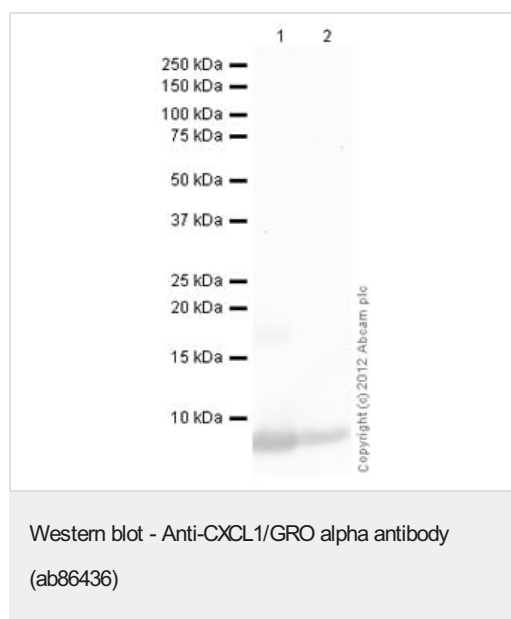
**All lanes :** Anti-CXCL1/GRO alpha antibody (ab86436) at 0.5 µg/ml

**Lane 1 :** Jurkat cell lysate

**Lane 2 :** 3T3 cell lysate

**Predicted band size:** 11 kDa

**Observed band size:** 9 kDa



**All lanes :** Anti-CXCL1/GRO alpha antibody (ab86436) at 0.5 µg/ml

**Lane 1 :** Recombinant rat CXCL1/GRO alpha protein ([ab9773](#)) at 0.1 µg

**Lane 2 :** Recombinant rat CXCL1/GRO alpha protein ([ab9773](#)) at 0.01 µg

### Secondary

**All lanes :** Goat Anti-Rabbit IgG H&L (HRP) preadsorbed ([ab97080](#)) at 1/5000 dilution

Developed using the ECL technique.

Performed under reducing conditions.

**Predicted band size:** 11 kDa

**Exposure time:** 1 minute

**Please note:** All products are "FOR RESEARCH USE ONLY. NOT FOR USE IN DIAGNOSTIC PROCEDURES"

### **Our Abpromise to you: Quality guaranteed and expert technical support**

---

- Replacement or refund for products not performing as stated on the datasheet
- Valid for 12 months from date of delivery
- Response to your inquiry within 24 hours
  
- We provide support in Chinese, English, French, German, Japanese and Spanish
- Extensive multi-media technical resources to help you
- We investigate all quality concerns to ensure our products perform to the highest standards

If the product does not perform as described on this datasheet, we will offer a refund or replacement. For full details of the Abpromise, please visit <https://www.abcam.com/abpromise> or contact our technical team.

### **Terms and conditions**

---

- Guarantee only valid for products bought direct from Abcam or one of our authorized distributors