



Product datasheet

Anti-CXCL9 antibody ab118543

[2 Images](#)

Overview

| | |
|----------------------------|---|
| Product name | Anti-CXCL9 antibody |
| Description | Rabbit polyclonal to CXCL9 |
| Host species | Rabbit |
| Tested applications | Suitable for: IHC-P, WB |
| Species reactivity | Reacts with: Human |
| Immunogen | Synthetic peptide corresponding to Human CXCL9 aa 1-100 (N terminal). Database link: Q07325 |
| | <div>  Run BLAST with </div> <div>  Run BLAST with </div> |

General notes

The Life Science industry has been in the grips of a reproducibility crisis for a number of years. Abcam is leading the way in addressing this with our range of recombinant monoclonal antibodies and knockout edited cell lines for gold-standard validation. Please check that this product meets your needs before purchasing.

If you have any questions, special requirements or concerns, please send us an inquiry and/or contact our Support team ahead of purchase. Recommended alternatives for this product can be found below, along with publications, customer reviews and Q&As

Properties

| | |
|-----------------------------|--|
| Form | Liquid |
| Storage instructions | Shipped at 4°C. Store at +4°C short term (1-2 weeks). Upon delivery aliquot. Store at -20°C. Avoid freeze / thaw cycle. |
| Storage buffer | Preservatives: 0.025% Thimerosal (merthiolate), 0.01% Sodium azide Constituents: 5% BSA, 0.9% Sodium chloride, 0.1% Dibasic monohydrogen sodium phosphate |
| Purity | Immunogen affinity purified |
| Clonality | Polyclonal |
| Isotype | IgG |

Applications

The Abpromise guarantee Our [Abpromise guarantee](#) covers the use of ab118543 in the following tested applications.

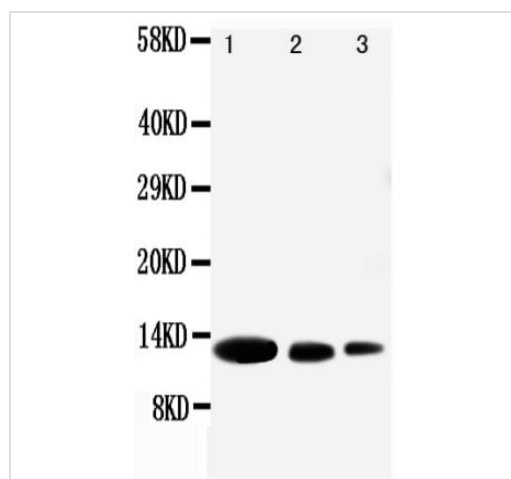
The application notes include recommended starting dilutions; optimal dilutions/concentrations should be determined by the end user.

| Application | Abreviews | Notes |
|-------------|-----------|--|
| IHC-P | | Use a concentration of 0.5 - 1 µg/ml. |
| WB | | Use a concentration of 0.1 - 0.5 µg/ml. Predicted molecular weight: 14 kDa. The detection limit for CXCL9 is approximately 2.5ng/lane under non-reducing and reducing conditions. |

Target

| | |
|------------------------------|---|
| Function | Cytokine that affects the growth, movement, or activation state of cells that participate in immune and inflammatory response. Chemotactic for activated T-cells. Binds to CXCR3. |
| Sequence similarities | Belongs to the intercrine alpha (chemokine CxC) family. |
| Cellular localization | Secreted. |

Images



Western blot - Anti-CXCL9 antibody (ab118543)

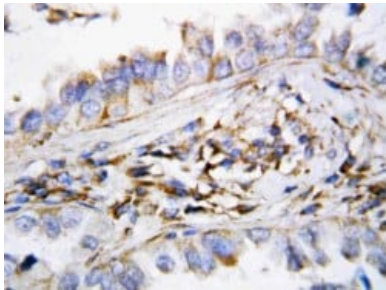
All lanes : Anti-CXCL9 antibody (ab118543)

Lane 1 : Recombinant Human CXCL9 Protein at 0.01 µg

Lane 2 : Recombinant Human CXCL9 Protein at 0.005 µg

Lane 3 : Recombinant Human CXCL9 Protein at 0.0025 µg

Predicted band size: 14 kDa



Immunohistochemistry (Formalin/PFA-fixed paraffin-embedded sections) staining CXCL9 with Human Lung Cancer Tissue with ab118543

Immunohistochemistry (Formalin/PFA-fixed paraffin-embedded sections) - Anti-CXCL9 antibody (ab118543)

Please note: All products are "FOR RESEARCH USE ONLY. NOT FOR USE IN DIAGNOSTIC PROCEDURES"

Our Abpromise to you: Quality guaranteed and expert technical support

- Replacement or refund for products not performing as stated on the datasheet
- Valid for 12 months from date of delivery
- Response to your inquiry within 24 hours
- We provide support in Chinese, English, French, German, Japanese and Spanish
- Extensive multi-media technical resources to help you
- We investigate all quality concerns to ensure our products perform to the highest standards

If the product does not perform as described on this datasheet, we will offer a refund or replacement. For full details of the Abpromise, please visit <https://www.abcam.com/abpromise> or contact our technical team.

Terms and conditions

- Guarantee only valid for products bought direct from Abcam or one of our authorized distributors