


Product datasheet

Anti-CXorf23 antibody [EPR12942] ab179446

Recombinant RabMAb

2 Images

Overview

Product name	Anti-CXorf23 antibody [EPR12942]
Description	Rabbit monoclonal [EPR12942] to CXorf23
Host species	Rabbit
Tested applications	Suitable for: WB Unsuitable for: Flow Cyt, ICC/IF or IP
Species reactivity	Reacts with: Human Predicted to work with: Mouse, Rat 
Immunogen	Recombinant fragment within Human CXorf23. The exact sequence is proprietary. Database link: A2AJT9
Positive control	Human skeletal muscle, cerebellum, placenta and HeLa lysates.
General notes	This product is a recombinant monoclonal antibody, which offers several advantages including: <ul style="list-style-type: none"> - High batch-to-batch consistency and reproducibility - Improved sensitivity and specificity - Long-term security of supply - Animal-free production For more information see here . Our RabMAb [®] technology is a patented hybridoma-based technology for making rabbit monoclonal antibodies. For details on our patents, please refer to RabMAb[®] patents .

Properties

Form	Liquid
Storage instructions	Shipped at 4°C. Store at +4°C short term (1-2 weeks). Upon delivery aliquot. Store at -20°C long term. Avoid freeze / thaw cycle.
Storage buffer	pH: 7.20 Preservative: 0.01% Sodium azide Constituents: 9% PBS, 40% Glycerol (glycerin, glycerine), 0.05% BSA, 50% Tissue culture supernatant
Purity	Tissue culture supernatant
Clonality	Monoclonal

Clone number EPR12942

Isotype IgG

Applications

The Abpromise guarantee Our **Abpromise guarantee** covers the use of ab179446 in the following tested applications.

The application notes include recommended starting dilutions; optimal dilutions/concentrations should be determined by the end user.

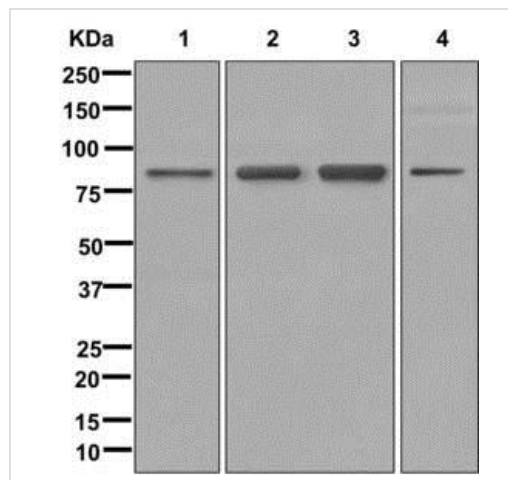
Application	Abreviews	Notes
WB		1/1000 - 1/10000. Predicted molecular weight: 84 kDa.

Application notes Is unsuitable for Flow Cyt, ICC/IF or IP.

Target

Cellular localization Mitochondrion.

Images



Western blot - Anti-CXorf23 antibody [EPR12942]
(ab179446)

All lanes : Anti-CXorf23 antibody [EPR12942] (ab179446) at 1/1000 dilution

Lane 1 : Human skeletal muscle lysate

Lane 2 : Human cerebellum lysate





Lane 3 : Human placenta lysate

Lane 4 : HeLa lysate

Lysates/proteins at 10 µg per lane.

Predicted band size: 84 kDa

Why choose a recombinant antibody?

 Research with confidence Consistent and reproducible results	 Long-term and scalable supply Recombinant technology
 Success from the first experiment Confirmed specificity	 Ethical standards compliant Animal-free production

Anti-CXorf23 antibody [EPR12942] (ab179446)

Please note: All products are "FOR RESEARCH USE ONLY. NOT FOR USE IN DIAGNOSTIC PROCEDURES"

Our Abpromise to you: Quality guaranteed and expert technical support

- Replacement or refund for products not performing as stated on the datasheet
- Valid for 12 months from date of delivery
- Response to your inquiry within 24 hours
- We provide support in Chinese, English, French, German, Japanese and Spanish
- Extensive multi-media technical resources to help you
- We investigate all quality concerns to ensure our products perform to the highest standards

If the product does not perform as described on this datasheet, we will offer a refund or replacement. For full details of the Abpromise, please visit <https://www.abcam.com/abpromise> or contact our technical team.

Terms and conditions

- Guarantee only valid for products bought direct from Abcam or one of our authorized distributors