


## Product datasheet

### Anti-Cyclin A2 antibody ab137769

★★★★★ [1 Abreviews](#) [8 References](#) [7 Images](#)

#### Overview

<b>Product name</b>	Anti-Cyclin A2 antibody
<b>Description</b>	Rabbit polyclonal to Cyclin A2
<b>Host species</b>	Rabbit
<b>Tested applications</b>	<b>Suitable for:</b> WB, IHC-P, ICC/IF, IP
<b>Species reactivity</b>	<b>Reacts with:</b> Mouse, Rat, Human <b>Predicted to work with:</b> Pig 
<b>Immunogen</b>	Recombinant fragment corresponding to Human Cyclin A2 (internal sequence). Recombinant fragment encompassing a sequence within the center region of human Cyclin A2. The exact sequence is proprietary. Database link: <a href="#">P20248</a>
<b>Positive control</b>	293T; A431; H1299; HeLaS3; HepG2; MOLT4; Raji and PC3 whole cell lysates; paraformaldehyde-fixed HeLa cells and paraffin-embedded NCIN87 xenograft.
<b>General notes</b>	<p>The Life Science industry has been in the grips of a reproducibility crisis for a number of years. Abcam is leading the way in addressing this with our range of recombinant monoclonal antibodies and knockout edited cell lines for gold-standard validation. Please check that this product meets your needs before purchasing.</p> <p>If you have any questions, special requirements or concerns, please send us an inquiry and/or contact our Support team ahead of purchase. Recommended alternatives for this product can be found below, along with publications, customer reviews and Q&amp;As</p>

#### Properties

<b>Form</b>	Liquid
<b>Storage instructions</b>	Shipped at 4°C. Upon delivery aliquot. Store at -20°C or -80°C. Avoid freeze / thaw cycle.
<b>Storage buffer</b>	pH: 7.00 Preservative: 0.025% Proclin 300 Constituents: 79% PBS, 20% Glycerol (glycerin, glycerine)
<b>Purity</b>	Immunogen affinity purified
<b>Clonality</b>	Polyclonal
<b>Isotype</b>	IgG

## Applications

### The Abpromise guarantee

Our **Abpromise guarantee** covers the use of ab137769 in the following tested applications.

The application notes include recommended starting dilutions; optimal dilutions/concentrations should be determined by the end user.

Application	Abreviews	Notes
WB	★★★★★ (1)	1/500 - 1/3000. Predicted molecular weight: 49 kDa.
IHC-P		1/100 - 1/1000. Perform heat mediated antigen retrieval with citrate buffer pH 6 before commencing with IHC staining protocol.
ICC/IF		1/100 - 1/1000.
IP		1/100 - 1/500.

## Target

### Function

Essential for the control of the cell cycle at the G1/S (start) and the G2/M (mitosis) transitions.

### Sequence similarities

Belongs to the cyclin family. Cyclin AB subfamily.

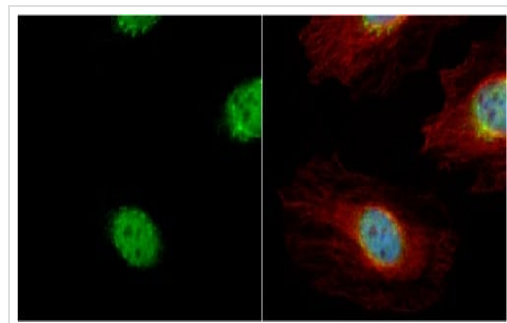
### Developmental stage

Accumulates steadily during G2 and is abruptly destroyed at mitosis.

### Cellular localization

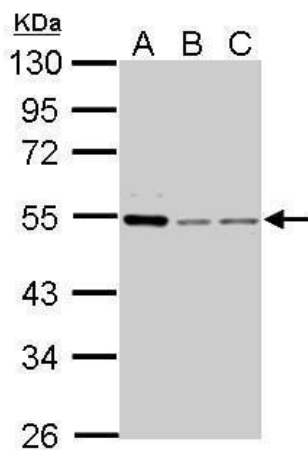
Nucleus. Cytoplasm. Cytoplasmic when associated with SCAPER.

## Images



Immunocytochemistry/ Immunofluorescence - Anti-Cyclin A2 antibody (ab137769)

ab137769 detects Cyclin A2 protein at cytoplasm and nucleus by immunofluorescent analysis. Sample: HeLa cells were fixed in 4% paraformaldehyde at RT for 15 min. Green: Cyclin A2 protein stained by ab137769 diluted at 1/200.  
Red: phalloidin, a cytoskeleton marker diluted at 1/200.  
Blue: Hoechst 33342 staining.



Western blot - Anti-Cyclin A2 antibody (ab137769)

**All lanes** : Anti-Cyclin A2 antibody (ab137769) at 1/1000 dilution

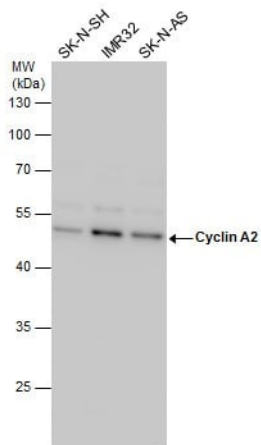
**Lane 1** : 293T whole cell lysate

**Lane 2** : HeLa whole cell lysate

**Lane 3** : A375 whole cell lysate

Lysates/proteins at 30 µg per lane.

**Predicted band size:** 49 kDa



Western blot - Anti-Cyclin A2 antibody (ab137769)

**All lanes** : Anti-Cyclin A2 antibody (ab137769) at 1/1000 dilution

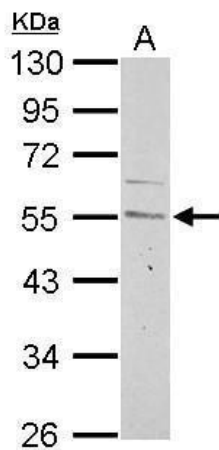
**Lane 1** : SK-N-SH whole cell extract

**Lane 2** : IMR32 whole cell extract

**Lane 3** : SK-N-AS whole cell extract

Lysates/proteins at 30 µg per lane.

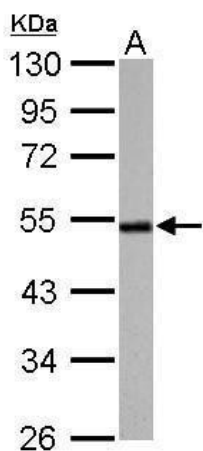
**Predicted band size:** 49 kDa



Western blot - Anti-Cyclin A2 antibody (ab137769)

Anti-Cyclin A2 antibody (ab137769) at 1/1000 dilution + Neuro2A whole cell lysate at 30 µg

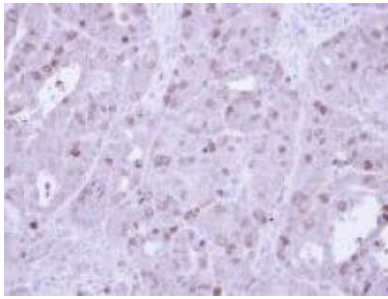
**Predicted band size:** 49 kDa



Western blot - Anti-Cyclin A2 antibody (ab137769)

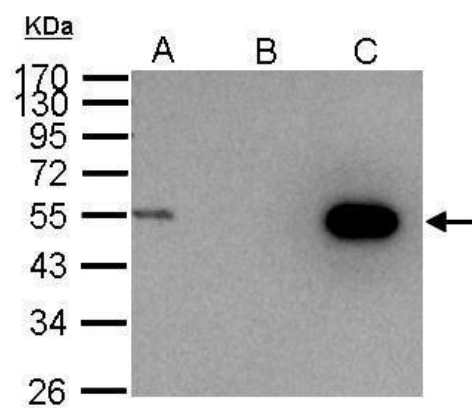
Anti-Cyclin A2 antibody (ab137769) at 1/1000 dilution + PC-12 whole cell lysate at 30 µg

**Predicted band size:** 49 kDa



Immunohistochemical analysis of paraffin embedded NCIN87 xenograft, labelling Cyclin A using ab137769 at 1/500 dilution.

Immunohistochemistry (Formalin/PFA-fixed paraffin-embedded sections) - Anti-Cyclin A2 antibody (ab137769)



ab137769 immunoprecipitates Cyclin A2 protein in IP experiments. IP Sample: 1000 µg 293T whole cell lysate. A.) 30 µg 293T whole cell lysate. B.) Control with 2.5 µg of preimmune rabbit IgG. C.) Immunoprecipitation of Cyclin A2 protein by 2.5 µg of ab137769. 10% SDS-PAGE: The immunoprecipitated Cyclin A2 protein was detected by ab137769 diluted at 1/1000.

Immunoprecipitation - Anti-Cyclin A2 antibody (ab137769)

**Please note:** All products are "FOR RESEARCH USE ONLY. NOT FOR USE IN DIAGNOSTIC PROCEDURES"

### Our Abpromise to you: Quality guaranteed and expert technical support

- Replacement or refund for products not performing as stated on the datasheet
- Valid for 12 months from date of delivery
- Response to your inquiry within 24 hours
- We provide support in Chinese, English, French, German, Japanese and Spanish
- Extensive multi-media technical resources to help you
- We investigate all quality concerns to ensure our products perform to the highest standards

If the product does not perform as described on this datasheet, we will offer a refund or replacement. For full details of the Abpromise, please visit <https://www.abcam.com/abpromise> or contact our technical team.

### Terms and conditions

- Guarantee only valid for products bought direct from Abcam or one of our authorized distributors