

Product datasheet

Anti-Cyclin A2 antibody [EPRR19346-64] ab211735

Recombinant RabMAb

★★★★★ [2 Abreviews](#) [1 References](#) [11 Images](#)

Overview

Product name	Anti-Cyclin A2 antibody [EPRR19346-64]
Description	Rabbit monoclonal [EPRR19346-64] to Cyclin A2
Host species	Rabbit
Tested applications	Suitable for: ICC/IF, IP, IHC-P, WB
Species reactivity	Reacts with: Human
Immunogen	Recombinant fragment. This information is proprietary to Abcam and/or its suppliers.
Positive control	WB: MCF7, HeLa, K562, SW480 and HEK-293 whole cell lysates; human fetal liver and fetal kidney lysates. IHC-P: Human tonsil, colon, colon cancer, cervix cancer and endometrial cancer tissues. ICC/IF: HeLa and K562 cells. IP: HeLa whole cell lysate.
General notes	<p>This product is a recombinant monoclonal antibody, which offers several advantages including:</p> <ul style="list-style-type: none"> - High batch-to-batch consistency and reproducibility - Improved sensitivity and specificity - Long-term security of supply - Animal-free production <p>For more information see here.</p> <p>Our RabMAb[®] technology is a patented hybridoma-based technology for making rabbit monoclonal antibodies. For details on our patents, please refer to RabMAb[®] patents.</p>

Properties

Form	Liquid
Storage instructions	Shipped at 4°C. Store at +4°C short term (1-2 weeks). Upon delivery aliquot. Store at -20°C long term. Avoid freeze / thaw cycle.
Storage buffer	<p>pH: 7.2</p> <p>Preservative: 0.01% Sodium azide</p> <p>Constituents: 59% PBS, 40% Glycerol (glycerin, glycerine), 0.05% BSA</p>
Purity	Protein A purified
Clonality	Monoclonal
Clone number	EPRR19346-64

Isotype

IgG

Applications

The Abpromise guarantee

Our **Abpromise guarantee** covers the use of ab211735 in the following tested applications.

The application notes include recommended starting dilutions; optimal dilutions/concentrations should be determined by the end user.

Application	Abreviews	Notes
ICC/IF	★★★★★ (1)	1/250.
IP		1/30.
IHC-P		1/2000. Perform heat mediated antigen retrieval with Tris/EDTA buffer pH 9.0 before commencing with IHC staining protocol.
WB	★★★★★ (1)	1/1000. Detects a band of approximately 50 kDa (predicted molecular weight: 49 kDa).

Target

Function

Essential for the control of the cell cycle at the G1/S (start) and the G2/M (mitosis) transitions.

Sequence similarities

Belongs to the cyclin family. Cyclin AB subfamily.

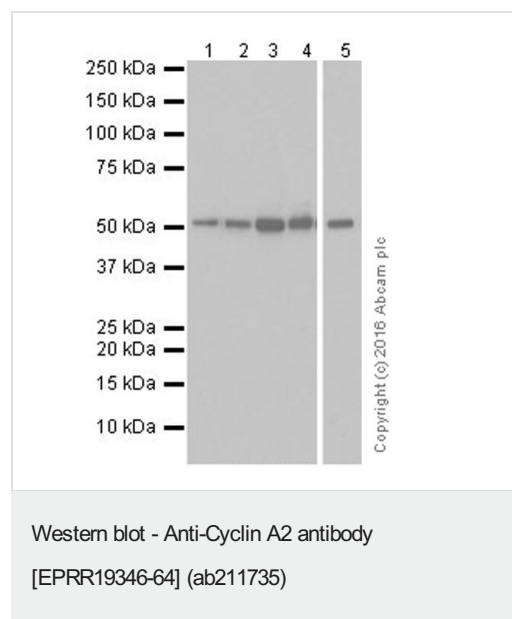
Developmental stage

Accumulates steadily during G2 and is abruptly destroyed at mitosis.

Cellular localization

Nucleus. Cytoplasm. Cytoplasmic when associated with SCAPER.

Images



Lanes 1-4 : Anti-Cyclin A2 antibody [EPRR19346-64] (ab211735) at 1/1000 dilution

Lane 5 : Anti-Cyclin A2 antibody [EPRR19346-64] (ab211735) at 1/10000 dilution

Lane 1 : MCF7 (Human breast adenocarcinoma cell line) whole cell lysate

Lane 2 : HeLa (Human epithelial cell line from cervix adenocarcinoma) whole cell lysate

Lane 3 : K562 (Human chronic myelogenous leukemia cell line from bone marrow) whole cell lysate

Lane 4 : SW480 (Human colorectal adenocarcinoma cell line) whole cell lysate

Lane 5 : HEK-293 (Human epithelial cell line from embryonic kidney) whole cell lysate

Lysates/proteins at 10 µg per lane.

Secondary

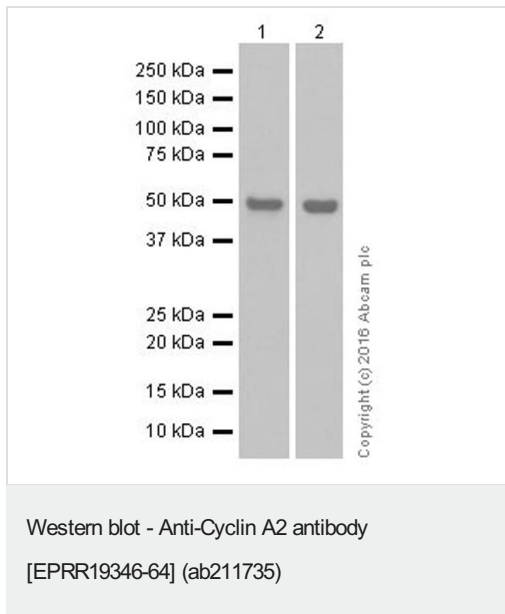
All lanes : Goat Anti-Rabbit IgG H&L (HRP) (**ab97051**) at 1/100000 dilution

Predicted band size: 49 kDa

Observed band size: 50 kDa

Exposure time: 3 seconds

Blocking/Dilution buffer: 5% NFDM/TBST.



All lanes : Anti-Cyclin A2 antibody [EPRR19346-64] (ab211735) at 1/1000 dilution

Lane 1 : Human fetal liver lysate

Lane 2 : Human fetal kidney lysate

Lysates/proteins at 10 µg per lane.

Secondary

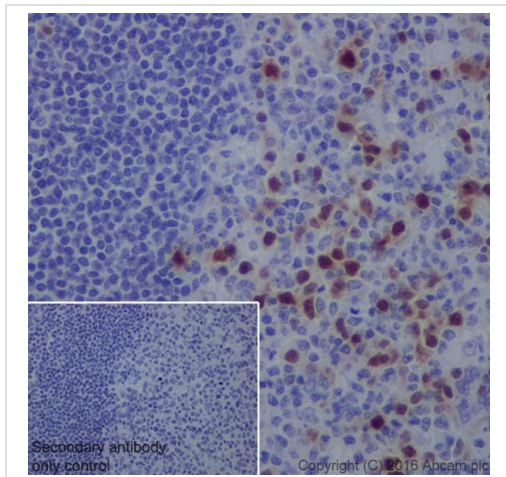
All lanes : Goat Anti-Rabbit IgG Peroxidase Conjugate, specific to the non-reduced form of IgG at 1/10000 dilution

Predicted band size: 49 kDa

Observed band size: 50 kDa

Blocking/Dilution buffer: 5% NFDM/TBST.

Exposure time: Lane 1: 30 seconds; Lane 2: 3 minutes.

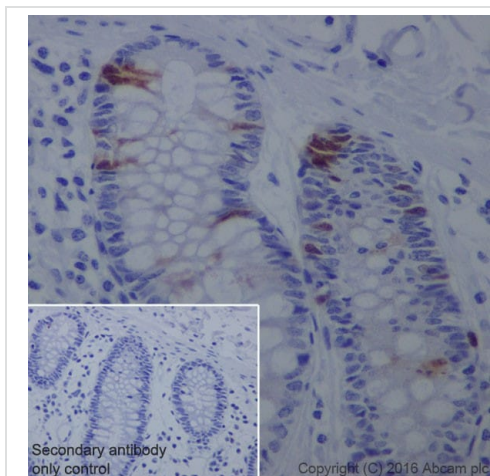


Immunohistochemistry (Formalin/PFA-fixed paraffin-embedded sections) - Anti-Cyclin A2 antibody [EPRR19346-64] (ab211735)

Immunohistochemical analysis of paraffin-embedded human tonsil tissue labeling Cyclin A2 with ab211735 at 1/2000 dilution, followed by Goat Anti-Rabbit IgG H&L (HRP) ([ab97051](#)) at 1/500 dilution. Nuclear and weak cytoplasmic staining on germinal center cells of human tonsil tissue is observed. Counter stained with Hematoxylin.

Secondary antibody only control: Used PBS instead of primary antibody, secondary antibody is Goat Anti-Rabbit IgG H&L (HRP) ([ab97051](#)) at 1/500 dilution.

Perform heat mediated antigen retrieval with Tris/EDTA buffer pH 9.0 before commencing with IHC staining protocol.

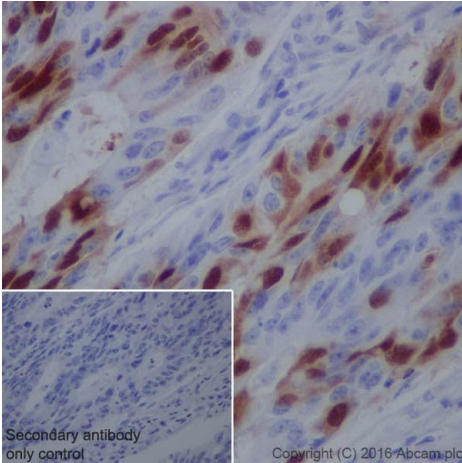


Immunohistochemistry (Formalin/PFA-fixed paraffin-embedded sections) - Anti-Cyclin A2 antibody [EPRR19346-64] (ab211735)

Immunohistochemical analysis of paraffin-embedded human colon tissue labeling Cyclin A2 with ab211735 at 1/2000 dilution, followed by Goat Anti-Rabbit IgG H&L (HRP) ([ab97051](#)) at 1/500 dilution. Nuclear and weak cytoplasmic staining on a small proportion of epithelial cells of human colon tissue is observed. Counter stained with Hematoxylin.

Secondary antibody only control: Used PBS instead of primary antibody, secondary antibody is Goat Anti-Rabbit IgG H&L (HRP) ([ab97051](#)) at 1/500 dilution.

Perform heat mediated antigen retrieval with Tris/EDTA buffer pH 9.0 before commencing with IHC staining protocol.

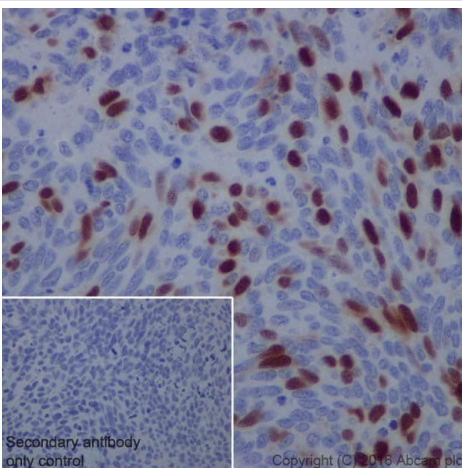


Immunohistochemistry (Formalin/PFA-fixed paraffin-embedded sections) - Anti-Cyclin A2 antibody [EPRR19346-64] (ab211735)

Immunohistochemical analysis of paraffin-embedded human colon cancer tissue labeling Cyclin A2 with ab211735 at 1/2000 dilution, followed by Goat Anti-Rabbit IgG H&L (HRP) ([ab97051](#)) at 1/500 dilution. Nuclear and weak cytoplasmic staining on some tumor cells of human colon cancer tissue is observed. Counter stained with Hematoxylin.

Secondary antibody only control: Used PBS instead of primary antibody, secondary antibody is Goat Anti-Rabbit IgG H&L (HRP) ([ab97051](#)) at 1/500 dilution.

Perform heat mediated antigen retrieval with Tris/EDTA buffer pH 9.0 before commencing with IHC staining protocol.

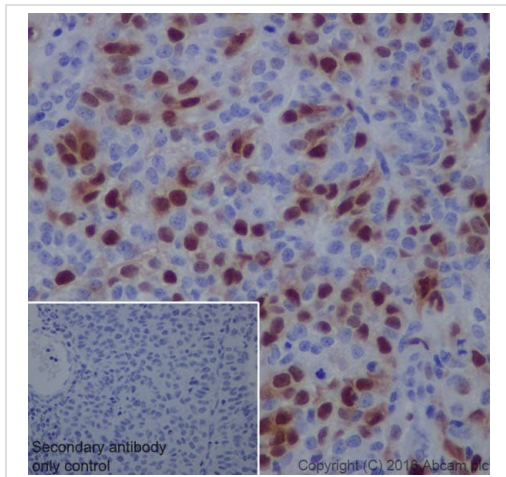


Immunohistochemistry (Formalin/PFA-fixed paraffin-embedded sections) - Anti-Cyclin A2 antibody [EPRR19346-64] (ab211735)

Immunohistochemical analysis of paraffin-embedded human cervix cancer tissue labeling Cyclin A2 with ab211735 at 1/2000 dilution, followed by Goat Anti-Rabbit IgG H&L (HRP) ([ab97051](#)) at 1/500 dilution. Nuclear and weak cytoplasmic staining on some tumor cells of human cervix cancer tissue is observed. Counter stained with Hematoxylin.

Secondary antibody only control: Used PBS instead of primary antibody, secondary antibody is Goat Anti-Rabbit IgG H&L (HRP) ([ab97051](#)) at 1/500 dilution.

Perform heat mediated antigen retrieval with Tris/EDTA buffer pH 9.0 before commencing with IHC staining protocol.

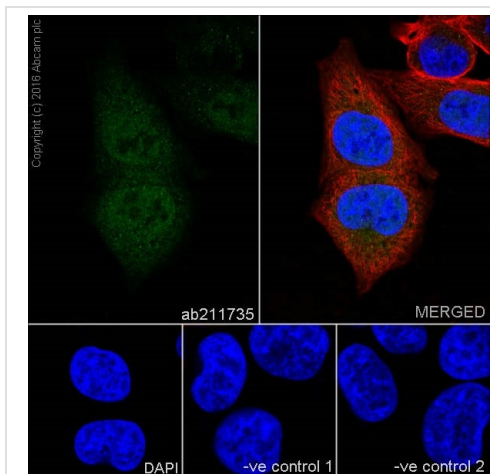


Immunohistochemistry (Formalin/PFA-fixed paraffin-embedded sections) - Anti-Cyclin A2 antibody [EPRR19346-64] (ab211735)

Immunohistochemical analysis of paraffin-embedded human endometrial cancer tissue labeling Cyclin A2 with ab211735 at 1/2000 dilution, followed by Goat Anti-Rabbit IgG H&L (HRP) ([ab97051](#)) at 1/500 dilution. Nuclear and weak cytoplasmic staining on some tumor cells of human endometrial cancer tissue is observed. Counter stained with Hematoxylin.

Secondary antibody only control: Used PBS instead of primary antibody, secondary antibody is Goat Anti-Rabbit IgG H&L (HRP) ([ab97051](#)) at 1/500 dilution.

Perform heat mediated antigen retrieval with Tris/EDTA buffer pH 9.0 before commencing with IHC staining protocol.



Immunocytochemistry/ Immunofluorescence - Anti-Cyclin A2 antibody [EPRR19346-64] (ab211735)

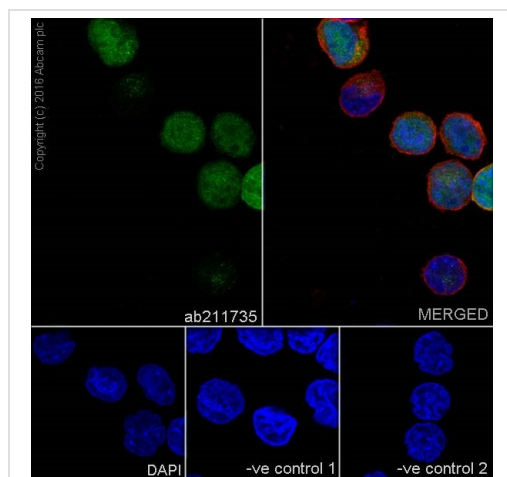
Immunofluorescent analysis of 4% paraformaldehyde-fixed, 0.1% Triton X-100 permeabilized HeLa (Human epithelial cell line from cervix adenocarcinoma) cells labeling Cyclin A2 with ab211735 at 1/250 dilution, followed by Goat Anti-Rabbit IgG H&L (Alexa Fluor® 488) ([ab150077](#)) secondary antibody at 1/1000 dilution (green). Confocal image showing nuclear and cytoplasmic staining on HeLa cell line. The nuclear counter stain is DAPI (blue).

Tubulin is detected with Anti-alpha Tubulin mouse MAb ([ab7291](#)) at 1/1000 dilution and Goat Anti-Mouse IgG H&L (Alexa Fluor® 594) ([ab150120](#)) secondary antibody at 1/1000 dilution (red).

The negative controls are as follows:

-ve control 1: ab211735 at 1/250 dilution followed by Goat Anti-Mouse IgG H&L (Alexa Fluor® 594) ([ab150120](#)) secondary antibody at 1/1000 dilution.

-ve control 2: Anti-alpha Tubulin mouse MAb ([ab7291](#)) at 1/1000 dilution followed by Goat Anti-Rabbit IgG H&L (Alexa Fluor® 488) ([ab150077](#)) secondary antibody at 1/1000 dilution.



Immunocytochemistry/ Immunofluorescence - Anti-Cyclin A2 antibody [EPRR19346-64] (ab211735)

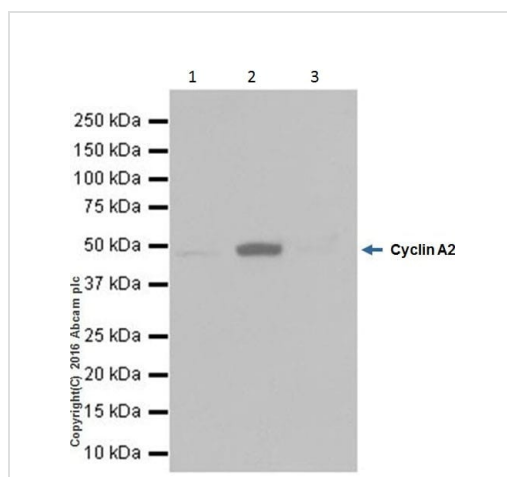
Immunofluorescent analysis of 4% paraformaldehyde-fixed, 0.1% Triton X-100 permeabilized K562 (Human chronic myelogenous leukemia cell line from bone marrow) cells labeling Cyclin A2 with ab211735 at 1/250 dilution, followed by Goat Anti-Rabbit IgG H&L (Alexa Fluor® 488) (**ab150077**) secondary antibody at 1/1000 dilution (green). Confocal image showing nuclear and cytoplasmic staining on K562 cell line. The nuclear counter stain is DAPI (blue).

Tubulin is detected with Anti-alpha Tubulin mouse MAb (**ab7291**) at 1/1000 dilution and Goat Anti-Mouse IgG H&L (Alexa Fluor® 594) (**ab150120**) secondary antibody at 1/1000 dilution (red).

The negative controls are as follows:

-ve control 1: ab211735 at 1/250 dilution followed by Goat Anti-Mouse IgG H&L (Alexa Fluor® 594) (**ab150120**) secondary antibody at 1/1000 dilution.

-ve control 2: Anti-alpha Tubulin mouse MAb (**ab7291**) at 1/1000 dilution followed by Goat Anti-Rabbit IgG H&L (Alexa Fluor® 488) (**ab150077**) secondary antibody at 1/1000 dilution.



Immunoprecipitation - Anti-Cyclin A2 antibody [EPRR19346-64] (ab211735)

Cyclin A2 was immunoprecipitated from 0.35 mg of HeLa (Human epithelial cell line from cervix adenocarcinoma) whole cell lysate with ab211735 at 1/30 dilution. Western blot was performed from the immunoprecipitate using ab211735 at 1/1000 dilution. VeriBlot for IP Detection Reagent (HRP) (**ab131366**), was used for detection at 1/10,000 dilution

Lane 1: HeLa whole cell lysate 10ug (Input).

Lane 2: ab211735 IP in HeLa whole cell lysate.

Lane 3: Rabbit monoclonal IgG (**ab172730**) instead of ab211735 in HeLa whole cell lysate.

Blocking and dilution buffer and concentration: 5% NFDM/TBST.

Exposure time: 3 seconds.

Why choose a recombinant antibody?



Research with confidence
Consistent and reproducible results



Long-term and scalable supply
Recombinant technology



Success from the first experiment
Confirmed specificity



Ethical standards compliant
Animal-free production

Anti-Cyclin A2 antibody [EPRR19346-64]
(ab211735)

Please note: All products are "FOR RESEARCH USE ONLY. NOT FOR USE IN DIAGNOSTIC PROCEDURES"

Our Abpromise to you: Quality guaranteed and expert technical support

- Replacement or refund for products not performing as stated on the datasheet
- Valid for 12 months from date of delivery
- Response to your inquiry within 24 hours
- We provide support in Chinese, English, French, German, Japanese and Spanish
- Extensive multi-media technical resources to help you
- We investigate all quality concerns to ensure our products perform to the highest standards

If the product does not perform as described on this datasheet, we will offer a refund or replacement. For full details of the Abpromise, please visit <https://www.abcam.com/abpromise> or contact our technical team.

Terms and conditions

- Guarantee only valid for products bought direct from Abcam or one of our authorized distributors