


Anti-Cyclin C antibody ab85927

[6 References](#) [3 Images](#)

Overview

Product name	Anti-Cyclin C antibody
Description	Rabbit polyclonal to Cyclin C
Host species	Rabbit
Tested applications	Suitable for: WB, IP, IHC-P
Species reactivity	Reacts with: Human Predicted to work with: Mouse, Rat, Rabbit, Horse, Chicken, Guinea pig, Cow, Dog, Turkey, Pig, Chimpanzee, Rhesus monkey, Gorilla, Orangutan, Platypus 
Immunogen	Synthetic peptide corresponding to Human Cyclin C aa 233-283. Database link: P24863
Positive control	Panc1, 293T, Jurkat, H2009 and HeLa whole cell lysate (ab150035).
General notes	<p>The Life Science industry has been in the grips of a reproducibility crisis for a number of years. Abcam is leading the way in addressing this with our range of recombinant monoclonal antibodies and knockout edited cell lines for gold-standard validation. Please check that this product meets your needs before purchasing.</p> <p>If you have any questions, special requirements or concerns, please send us an inquiry and/or contact our Support team ahead of purchase. Recommended alternatives for this product can be found below, along with publications, customer reviews and Q&As</p>

Properties

Form	Liquid
Storage instructions	Shipped at 4°C. Upon delivery aliquot and store at -20°C. Avoid freeze / thaw cycles.
Storage buffer	pH: 7 Preservative: 0.09% Sodium azide Constituent: Tris citrate/phosphate
Purity	Immunogen affinity purified
Clonality	Polyclonal
Isotype	IgG

Applications

The Abpromise guarantee

Our **Abpromise guarantee** covers the use of ab85927 in the following tested applications.

The application notes include recommended starting dilutions; optimal dilutions/concentrations should be determined by the end user.

Application	Abreviews	Notes
WB		1/2000 - 1/10000. Detects a band of approximately 33 kDa (predicted molecular weight: 33 kDa).
IP		Use at 2-5 µg/mg of lysate.
IHC-P		1/1000 - 1/5000. Perform heat mediated antigen retrieval before commencing with IHC staining protocol.

Target

Function

Component of the Mediator complex, a coactivator involved in regulated gene transcription of nearly all RNA polymerase II-dependent genes. Mediator functions as a bridge to convey information from gene-specific regulatory proteins to the basal RNA polymerase II transcription machinery. Mediator is recruited to promoters by direct interactions with regulatory proteins and serves as a scaffold for the assembly of a functional preinitiation complex with RNA polymerase II and the general transcription factors. Binds to and activates cyclin-dependent kinase CDK8 that phosphorylates the CTD (C-terminal domain) of the large subunit of RNA polymerase II (RNAP II), which may inhibit the formation of a transcription initiation complex.

Tissue specificity

Highest levels in pancreas. High levels in heart, liver, skeletal muscle and kidney. Low levels in brain.

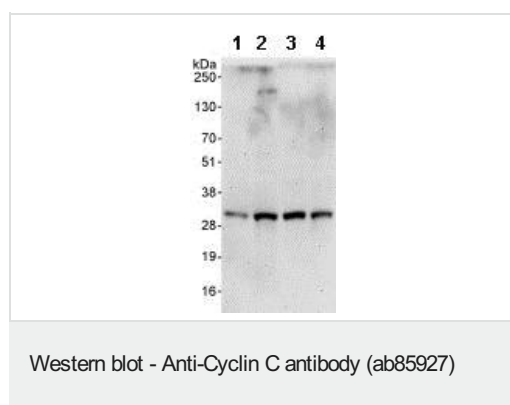
Sequence similarities

Belongs to the cyclin family. Cyclin C subfamily.
Contains 1 cyclin N-terminal domain.

Cellular localization

Nucleus.

Images



All lanes : Anti-Cyclin C antibody (ab85927) at 0.1 µg/ml

Lane 1 : Panc1 whole cell lysate

Lane 2 : 293T whole cell lysate

Lane 3 : Jurkat whole cell lysate

Lane 4 : H2009 whole cell lysate

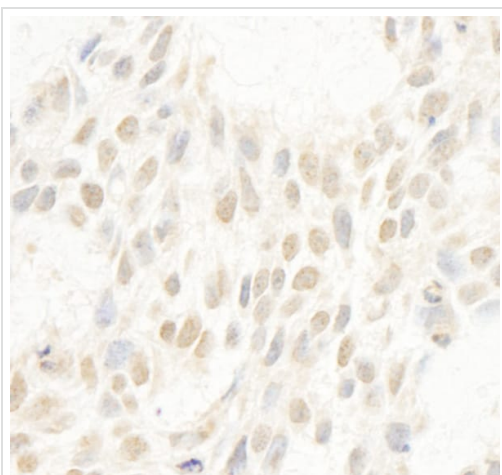
Lysates/proteins at 50 µg per lane.

Developed using the ECL technique.

Predicted band size: 33 kDa

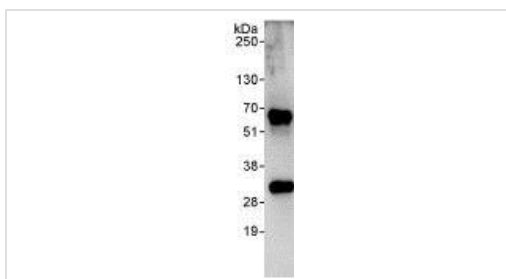
Observed band size: 33 kDa

Exposure time: 3 minutes



Immunohistochemistry (Formalin/PFA-fixed paraffin-embedded sections) - Anti-Cyclin C antibody (ab85927)

Immunohistochemistry (Formalin/PFA-fixed paraffin-embedded sections) analysis of human breast carcinoma tissue labelling Cyclin C with ab85927 at 1/1000 (1 µg/ml). Detection: DAB.



Immunoprecipitation - Anti-Cyclin C antibody (ab85927)

Detection of Human Cyclin C in Immunoprecipitates of Whole cell lysate from HeLa cells (1 mg for IP, 20% of IP loaded) using ab85927 at 3 µg/mg lysate for IP and at 1 µg/ml for subsequent Western blot detection. Detection: Chemiluminescence with an exposure time of 30 seconds.

Please note: All products are "FOR RESEARCH USE ONLY. NOT FOR USE IN DIAGNOSTIC PROCEDURES"

Our Abpromise to you: Quality guaranteed and expert technical support

- Replacement or refund for products not performing as stated on the datasheet
- Valid for 12 months from date of delivery
- Response to your inquiry within 24 hours
- We provide support in Chinese, English, French, German, Japanese and Spanish
- Extensive multi-media technical resources to help you
- We investigate all quality concerns to ensure our products perform to the highest standards

If the product does not perform as described on this datasheet, we will offer a refund or replacement. For full details of the Abpromise, please visit <https://www.abcam.com/abpromise> or contact our technical team.

Terms and conditions

- Guarantee only valid for products bought direct from Abcam or one of our authorized distributors