

Product datasheet

Anti-Cyclin E1 antibody ab224819

[1 References](#) [3 Images](#)

Overview

Product name	Anti-Cyclin E1 antibody
Description	Rabbit polyclonal to Cyclin E1
Host species	Rabbit
Tested applications	Suitable for: IP, WB, IHC-P
Species reactivity	Reacts with: Human
Immunogen	Synthetic peptide within Human Cyclin E1 aa 360-410. The exact sequence is proprietary. (NP_001229.1). Database link: P24864
Positive control	WB: HeLa whole cell lysate (ab150035). IP: HeLa whole cell lysate (ab150035). IHC-P: Human ovarian carcinoma tissue.
General notes	<p>The Life Science industry has been in the grips of a reproducibility crisis for a number of years. Abcam is leading the way in addressing this with our range of recombinant monoclonal antibodies and knockout edited cell lines for gold-standard validation. Please check that this product meets your needs before purchasing.</p> <p>If you have any questions, special requirements or concerns, please send us an inquiry and/or contact our Support team ahead of purchase. Recommended alternatives for this product can be found below, along with publications, customer reviews and Q&As</p>

Properties

Form	Liquid
Storage instructions	Shipped at 4°C. Store at +4°C short term (1-2 weeks). Upon delivery aliquot. Store at -20°C long term. Avoid freeze / thaw cycle.
Storage buffer	pH: 6.8 Preservative: 0.09% Sodium azide Constituents: 0.1% BSA, Tris buffered saline
Purity	Immunogen affinity purified
Purification notes	ab224819 was affinity purified using an epitope specific to Cyclin E1 immobilized on solid support.
Clonality	Polyclonal
Isotype	IgG

Applications

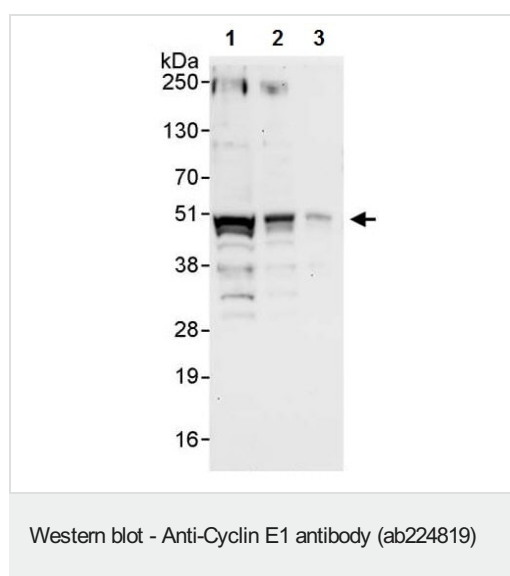
The Abpromise guarantee Our **Abpromise guarantee** covers the use of ab224819 in the following tested applications. The application notes include recommended starting dilutions; optimal dilutions/concentrations should be determined by the end user.

Application	Abreviews	Notes
IP		Use at 2-5 µg/mg of lysate.
WB		1/2000 - 1/10000. Predicted molecular weight: 47 kDa.
IHC-P		1/100 - 1/500. Perform heat mediated antigen retrieval with citrate buffer pH 6 before commencing with IHC staining protocol.

Target

Function	Essential for the control of the cell cycle at the G1/S (start) transition.
Tissue specificity	Highly expressed in testis and placenta. Low levels in bronchial epithelial cells.
Sequence similarities	Belongs to the cyclin family. Cyclin E subfamily.
Post-translational modifications	Phosphorylation of Thr-395 by GSK3 and of Ser-399 by CDK2 accelerates degradation via the ubiquitin proteasome pathway. Phosphorylated upon DNA damage, probably by ATM or ATR.
Cellular localization	Nucleus.

Images



All lanes : Anti-Cyclin E1 antibody (ab224819) at 0.04 µg/ml

Lane 1 : HeLa (human epithelial cell line from cervix adenocarcinoma) whole cell lysate at 50 µg

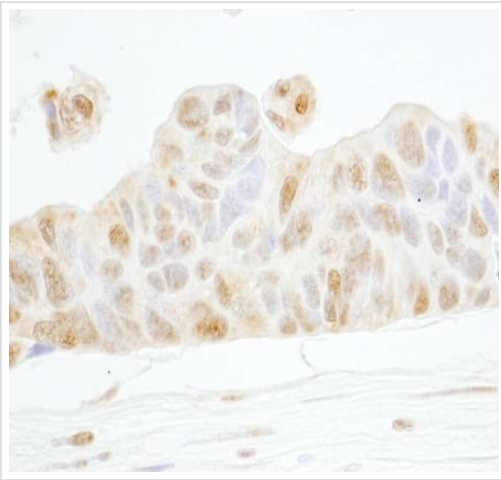
Lane 2 : HeLa (human epithelial cell line from cervix adenocarcinoma) whole cell lysate at 15 µg

Lane 3 : HeLa (human epithelial cell line from cervix adenocarcinoma) whole cell lysate at 5 µg

Developed using the ECL technique.

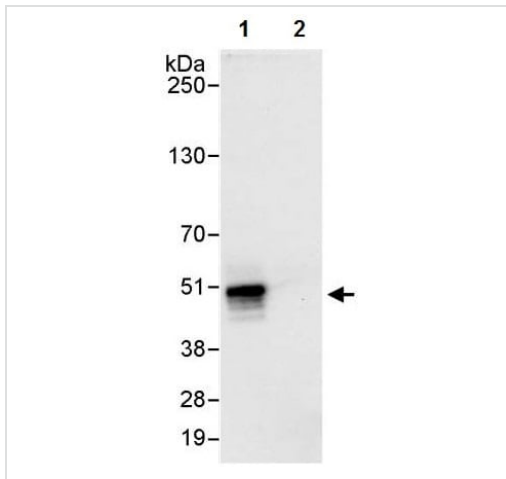
Predicted band size: 47 kDa

Exposure time: 1 minute



Immunohistochemistry (Formalin/PFA-fixed paraffin-embedded sections) - Anti-Cyclin E1 antibody (ab224819)

Formalin-fixed, paraffin-embedded human ovarian carcinoma tissue stained for Cyclin E1 using ab224819 at 1/200 dilution in immunohistochemical analysis. Detection: DAB staining.



Immunoprecipitation - Anti-Cyclin E1 antibody (ab224819)

Cyclin E1 was immunoprecipitated from HeLa (human epithelial cell line from cervix adenocarcinoma) whole cell lysate (1 mg for IP, 20% of IP loaded) with ab224819 at 3 µg/mg lysate. Western blot was performed from the immunoprecipitate using ab224819 at 1 µg/ml.

Lane 1: ab224819 IP in HeLa whole cell lysate.

Lane 2: Control IgG IP in HeLa whole cell lysate.

Detection: Chemiluminescence with exposure time of 3 seconds.

Please note: All products are "FOR RESEARCH USE ONLY. NOT FOR USE IN DIAGNOSTIC PROCEDURES"

Our Abpromise to you: Quality guaranteed and expert technical support

- Replacement or refund for products not performing as stated on the datasheet
- Valid for 12 months from date of delivery
- Response to your inquiry within 24 hours
- We provide support in Chinese, English, French, German, Japanese and Spanish
- Extensive multi-media technical resources to help you
- We investigate all quality concerns to ensure our products perform to the highest standards

If the product does not perform as described on this datasheet, we will offer a refund or replacement. For full details of the Abpromise, please visit <https://www.abcam.com/abpromise> or contact our technical team.

Terms and conditions

- Guarantee only valid for products bought direct from Abcam or one of our authorized distributors