


### Anti-CYP1A1 antibody ab124295

1 Image

#### Overview

<b>Product name</b>	Anti-CYP1A1 antibody
<b>Description</b>	Rabbit polyclonal to CYP1A1
<b>Host species</b>	Rabbit
<b>Tested applications</b>	<b>Suitable for:</b> WB
<b>Species reactivity</b>	<b>Reacts with:</b> Human <b>Predicted to work with:</b> Dog, Pig, Chimpanzee, Macaque monkey, Chinese hamster, Orngutan 
<b>Immunogen</b>	Synthetic peptide within Human CYP1A1 aa 50-150 conjugated to keyhole limpet haemocyanin. The exact sequence is proprietary. (Peptide available as <b>ab155750</b> )
<b>Positive control</b>	This antibody gave a positive signal in both Human Lung and Placenta tissue lysates.
<b>General notes</b>	<p>The Life Science industry has been in the grips of a reproducibility crisis for a number of years. Abcam is leading the way in addressing this with our range of recombinant monoclonal antibodies and knockout edited cell lines for gold-standard validation. Please check that this product meets your needs before purchasing.</p> <p>If you have any questions, special requirements or concerns, please send us an inquiry and/or contact our Support team ahead of purchase. Recommended alternatives for this product can be found below, along with publications, customer reviews and Q&amp;As</p>

#### Properties

<b>Form</b>	Liquid
<b>Storage instructions</b>	Shipped at 4°C. Store at +4°C short term (1-2 weeks). Upon delivery aliquot. Store at -20°C or -80°C. Avoid freeze / thaw cycle.
<b>Storage buffer</b>	pH: 7.40 Preservative: 0.02% Sodium azide Constituent: PBS
Batches of this product that have a concentration < 1mg/ml may have BSA added as a stabilising agent. If you would like information about the formulation of a specific lot, please contact our scientific support team who will be happy to help.	

<b>Purity</b>	Immunogen affinity purified
<b>Clonality</b>	Polyclonal
<b>Isotype</b>	IgG

## Applications

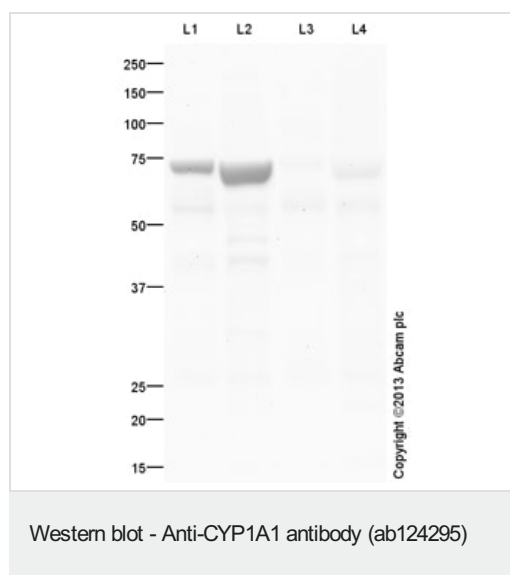
**The Abpromise guarantee** Our **Abpromise guarantee** covers the use of ab124295 in the following tested applications. The application notes include recommended starting dilutions; optimal dilutions/concentrations should be determined by the end user.

Application	Abreviews	Notes
<b>WB</b>		Use a concentration of 1 µg/ml. Detects a band of approximately 73 kDa (predicted molecular weight: 58 kDa).

## Target

<b>Function</b>	Cytochromes P450 are a group of heme-thiolate monooxygenases. In liver microsomes, this enzyme is involved in an NADPH-dependent electron transport pathway. It oxidizes a variety of structurally unrelated compounds, including steroids, fatty acids, and xenobiotics.
<b>Tissue specificity</b>	Lung, lymphocytes and placenta.
<b>Sequence similarities</b>	Belongs to the cytochrome P450 family.
<b>Cellular localization</b>	Endoplasmic reticulum membrane. Microsome membrane.

## Images



**All lanes** : Anti-CYP1A1 antibody (ab124295) at 1 µg/ml

**Lane 1** : Lung (Human) Tissue Lysate

**Lane 2** : Human placenta tissue lysate - total protein (**ab29745**)

**Lane 3** : Lung (Human) Tissue Lysate with Immunising peptide at 1 µg/ml

**Lane 4** : Human placenta tissue lysate - total protein (**ab29745**) with Immunising peptide at 1 µg/ml

Lysates/proteins at 10 µg per lane.

### Secondary

**All lanes** : Goat Anti-Rabbit IgG H&L (HRP) (**ab97051**) at 1/10000 dilution

Developed using the ECL technique.

Performed under reducing conditions.

**Predicted band size:** 58 kDa

**Observed band size:** 73 kDa

**Additional bands at:** 48 kDa, 55 kDa. We are unsure as to the identity of these extra bands.

**Exposure time:** 90 seconds

This blot was produced using a 10% Bis-tris gel under the MOPS buffer system. The gel was run at 200V for 50 minutes before being transferred onto a Nitrocellulose membrane at 30V for 70 minutes. The membrane was then blocked for an hour using 5% Bovine Serum Albumin before being incubated with ab124295 overnight at 4°C. Antibody binding was detected using an anti-rabbit antibody conjugated to HRP, and visualised using ECL development solution.

**Please note:** All products are "FOR RESEARCH USE ONLY. NOT FOR USE IN DIAGNOSTIC PROCEDURES"

### **Our Abpromise to you: Quality guaranteed and expert technical support**

---

- Replacement or refund for products not performing as stated on the datasheet
- Valid for 12 months from date of delivery
- Response to your inquiry within 24 hours
- We provide support in Chinese, English, French, German, Japanese and Spanish
- Extensive multi-media technical resources to help you
- We investigate all quality concerns to ensure our products perform to the highest standards

If the product does not perform as described on this datasheet, we will offer a refund or replacement. For full details of the Abpromise, please visit <https://www.abcam.com/abpromise> or contact our technical team.

### **Terms and conditions**

---

- Guarantee only valid for products bought direct from Abcam or one of our authorized distributors