

## Product datasheet

# Anti-CYP21A2 antibody ab64887

[2 References](#) [1 Image](#)

### Overview

---

<b>Product name</b>	Anti-CYP21A2 antibody
<b>Description</b>	Rabbit polyclonal to CYP21A2
<b>Host species</b>	Rabbit
<b>Tested applications</b>	<b>Suitable for:</b> WB
<b>Species reactivity</b>	<b>Reacts with:</b> Human
<b>Immunogen</b>	Synthetic peptide derived from an internal sequence of human CYP21A2.
<b>Positive control</b>	extracts from 293 cells.
<b>General notes</b>	<p>The Life Science industry has been in the grips of a reproducibility crisis for a number of years. Abcam is leading the way in addressing this with our range of recombinant monoclonal antibodies and knockout edited cell lines for gold-standard validation. Please check that this product meets your needs before purchasing.</p> <p>If you have any questions, special requirements or concerns, please send us an inquiry and/or contact our Support team ahead of purchase. Recommended alternatives for this product can be found below, along with publications, customer reviews and Q&amp;As</p>

### Properties

---

<b>Form</b>	Liquid
<b>Storage instructions</b>	Shipped at 4°C. Store at -20°C. Stable for 12 months at -20°C.
<b>Storage buffer</b>	pH: 7.40 Preservative: 0.02% Sodium azide Constituents: PBS, 50% Glycerol (glycerin, glycerine), 0.87% Sodium chloride
<b>Purity</b>	Immunogen affinity purified
<b>Clonality</b>	Polyclonal
<b>Isotype</b>	IgG

### Applications

---

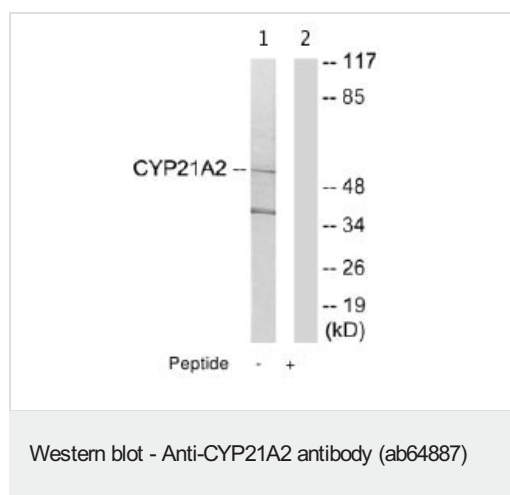
**The Abpromise guarantee** Our **Abpromise guarantee** covers the use of ab64887 in the following tested applications. The application notes include recommended starting dilutions; optimal dilutions/concentrations should be determined by the end user.

Application	Abreviews	Notes
WB		1/500 - 1/100. Detects a band of approximately 56, 40 kDa (predicted molecular weight: 56 kDa).

## Target

<b>Function</b>	Specifically catalyzes the 21-hydroxylation of steroids. Required for the adrenal synthesis of mineralocorticoids and glucocorticoids.
<b>Involvement in disease</b>	Adrenal hyperplasia 3
<b>Sequence similarities</b>	Belongs to the cytochrome P450 family.
<b>Domain</b>	The leucine-rich hydrophobic amino acid N-terminal region probably helps to anchor the protein to the microsomal membrane.
<b>Cellular localization</b>	Endoplasmic reticulum membrane. Microsome membrane.

## Images



**All lanes :** Anti-CYP21A2 antibody (ab64887) at 1/500 dilution

**Lane 1 :** extracts from 293 cells (5-30µg total protein)

**Lane 2 :** extracts from 293 cells (5-30µg total protein) and 5-10µg of the immunising peptide.

**Predicted band size:** 56 kDa

**Observed band size:** 56 kDa

**Additional bands at:** 40 kDa. We are unsure as to the identity of these extra bands.

**Please note:** All products are "FOR RESEARCH USE ONLY. NOT FOR USE IN DIAGNOSTIC PROCEDURES"

## Our Abpromise to you: Quality guaranteed and expert technical support

- Replacement or refund for products not performing as stated on the datasheet
- Valid for 12 months from date of delivery
- Response to your inquiry within 24 hours
- We provide support in Chinese, English, French, German, Japanese and Spanish
- Extensive multi-media technical resources to help you
- We investigate all quality concerns to ensure our products perform to the highest standards

If the product does not perform as described on this datasheet, we will offer a refund or replacement. For full details of the Abpromise, please visit <https://www.abcam.com/abpromise> or contact our technical team.

## Terms and conditions

---

- Guarantee only valid for products bought direct from Abcam or one of our authorized distributors