


## Product datasheet

### Anti-CYP26A1 antibody [EPR11841] ab172474

Recombinant RabMAb

★☆☆☆☆ [1 Abreviews](#) [3 References](#) [8 Images](#)

#### Overview

<b>Product name</b>	Anti-CYP26A1 antibody [EPR11841]
<b>Description</b>	Rabbit monoclonal [EPR11841] to CYP26A1
<b>Host species</b>	Rabbit
<b>Tested applications</b>	<b>Suitable for:</b> WB, IHC-P <b>Unsuitable for:</b> Flow Cyt, ICC/IF or IP
<b>Species reactivity</b>	<b>Reacts with:</b> Human <b>Predicted to work with:</b> Rat  <b>Does not react with:</b> Mouse
<b>Immunogen</b>	Recombinant fragment corresponding to Human CYP26A1 aa 250-450. Database link: <a href="#">O43174</a>
<b>Positive control</b>	Human placenta, fetal liver and fetal kidney tissue lysates; 293T and HepG2 cell lysates; Human liver and pancreas tissues.
<b>General notes</b>	This product is a recombinant monoclonal antibody, which offers several advantages including: <ul style="list-style-type: none"> <li>- High batch-to-batch consistency and reproducibility</li> <li>- Improved sensitivity and specificity</li> <li>- Long-term security of supply</li> <li>- Animal-free production</li> </ul> For more information <a href="#">see here</a> . Our RabMAb <sup>®</sup> technology is a patented hybridoma-based technology for making rabbit monoclonal antibodies. For details on our patents, please refer to <a href="#">RabMAb<sup>®</sup> patents</a> .

#### Properties

<b>Form</b>	Liquid
<b>Storage instructions</b>	Shipped at 4°C. Store at +4°C short term (1-2 weeks). Upon delivery aliquot. Store at -20°C long term. Avoid freeze / thaw cycle.
<b>Storage buffer</b>	pH: 7.20 Preservative: 0.01% Sodium azide Constituents: 9% PBS, 40% Glycerol (glycerin, glycerine), 0.05% BSA, 50% Tissue culture supernatant
<b>Purity</b>	Tissue culture supernatant

<b>Clonality</b>	Monoclonal
<b>Clone number</b>	EPR11841
<b>Isotype</b>	IgG

## Applications

**The Abpromise guarantee** Our **Abpromise guarantee** covers the use of ab172474 in the following tested applications. The application notes include recommended starting dilutions; optimal dilutions/concentrations should be determined by the end user.

Application	Abreviews	Notes
WB	★☆☆☆☆ (1)	1/1000 - 1/10000. Predicted molecular weight: 56 kDa.
IHC-P		1/250 - 1/500. Perform heat mediated antigen retrieval with citrate buffer pH 6 before commencing with IHC staining protocol.

**Application notes** Is unsuitable for Flow Cyt, ICC/IF or IP.

## Target

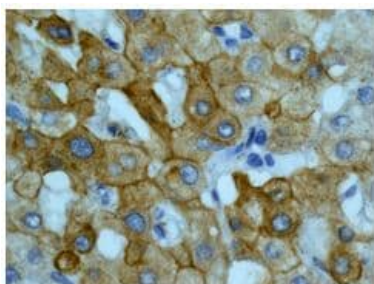
**Function** Plays a key role in retinoic acid metabolism. Acts on retinoids, including all-trans-retinoic acid (RA) and its stereoisomer 9-cis-RA. Capable of both 4-hydroxylation and 18-hydroxylation. Responsible for generation of several hydroxylated forms of RA, including 4-OH-RA, 4-oxo-RA and 18-OH-RA.

**Tissue specificity** Highest levels in adult liver, heart, pituitary gland, adrenal gland, placenta and regions of the brain.

**Sequence similarities** Belongs to the cytochrome P450 family.

**Cellular localization** Endoplasmic reticulum membrane. Microsome membrane.

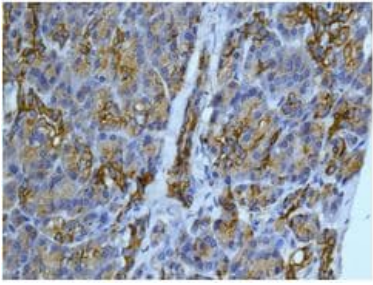
## Images



Immunohistochemical analysis of paraffin embedded Human liver tissue labeling CYP26A1 with ab172474 at 1/250 dilution.

Perform heat mediated antigen retrieval with citrate buffer pH 6 before commencing with IHC staining protocol.

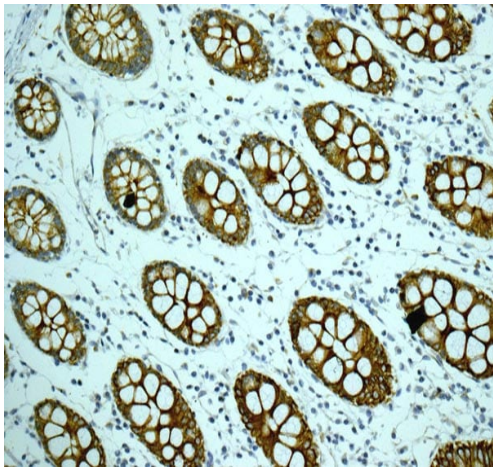
Immunohistochemistry (Formalin/PFA-fixed paraffin-embedded sections) - Anti-CYP26A1 antibody [EPR11841] (ab172474)



Immunohistochemistry (Formalin/PFA-fixed paraffin-embedded sections) - Anti-CYP26A1 antibody [EPR11841] (ab172474)

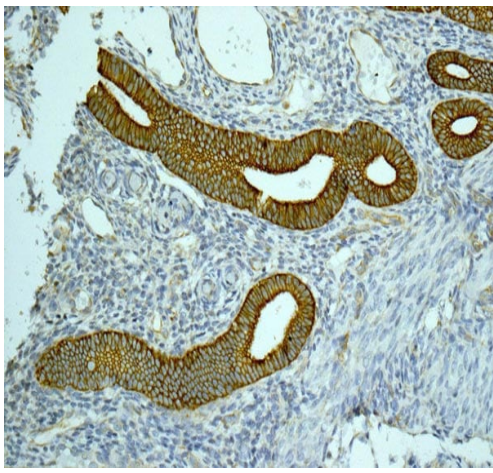
Immunohistochemical analysis of paraffin embedded Human pancreas tissue labeling CYP26A1 with ab172474 at 1/250 dilution.

Perform heat mediated antigen retrieval with citrate buffer pH 6 before commencing with IHC staining protocol.



Immunohistochemistry (Formalin/PFA-fixed paraffin-embedded sections) - Anti-CYP26A1 antibody [EPR11841] (ab172474)

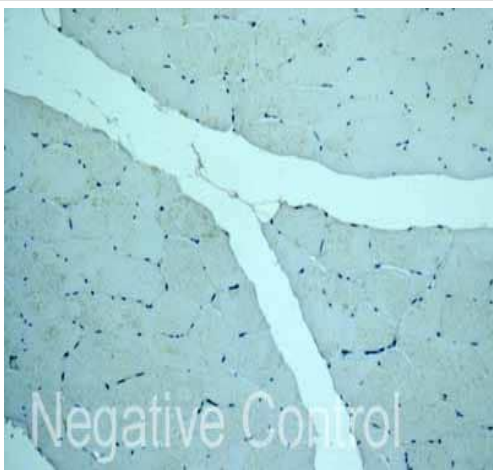
ab172474 showing +ve staining in Human normal colon tissue. Perform heat mediated antigen retrieval with citrate buffer pH 6 before commencing with IHC staining protocol.



Immunohistochemistry (Formalin/PFA-fixed paraffin-embedded sections) - Anti-CYP26A1 antibody [EPR11841] (ab172474)

ab172474 showing +ve staining in Human normal uterus tissue.

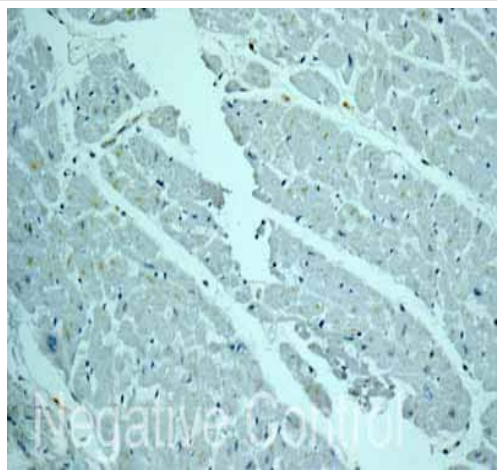
Perform heat mediated antigen retrieval with citrate buffer pH 6 before commencing with IHC staining protocol.



Immunohistochemistry (Formalin/PFA-fixed paraffin-embedded sections) - Anti-CYP26A1 antibody [EPR11841] (ab172474)

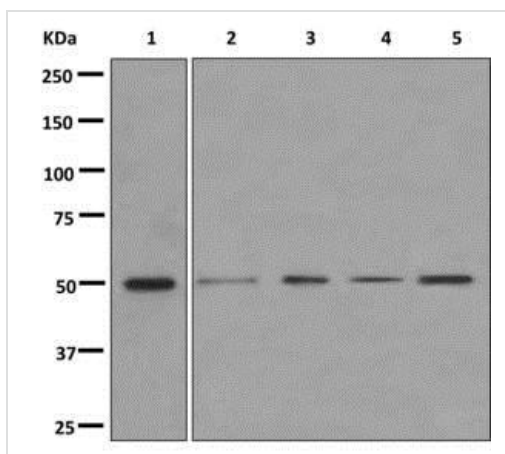
ab172474 showing -ve staining in Human skeletal muscle tissue.

Perform heat mediated antigen retrieval with citrate buffer pH 6 before commencing with IHC staining protocol.



Immunohistochemistry (Formalin/PFA-fixed paraffin-embedded sections) - Anti-CYP26A1 antibody [EPR11841] (ab172474)

ab172474 showing -ve staining in Human heart muscle tissue.  
 Perform heat mediated antigen retrieval with citrate buffer pH 6 before commencing with IHC staining protocol.



Western blot - Anti-CYP26A1 antibody [EPR11841] (ab172474)

**All lanes** : Anti-CYP26A1 antibody [EPR11841] (ab172474) at 1/1000 dilution

- Lane 1** : Human placenta tissue lysate
- Lane 2** : Human fetal liver tissue lysate
- Lane 3** : Human fetal kidney tissue lysate
- Lane 4** : 293T (Human embryonic kidney epithelial cell) cell lysate
- Lane 5** : HepG2 cell lysate

Lysates/proteins at 10 µg per lane.

**Predicted band size:** 56 kDa

Why choose a recombinant antibody?

**Research with confidence**  
Consistent and reproducible results

**Long-term and scalable supply**  
Recombinant technology

**Success from the first experiment**  
Confirmed specificity

**Ethical standards compliant**  
Animal-free production

Anti-CYP26A1 antibody [EPR11841] (ab172474)

**Please note:** All products are "FOR RESEARCH USE ONLY. NOT FOR USE IN DIAGNOSTIC PROCEDURES"

### **Our Abpromise to you: Quality guaranteed and expert technical support**

---

- Replacement or refund for products not performing as stated on the datasheet
- Valid for 12 months from date of delivery
- Response to your inquiry within 24 hours
  
- We provide support in Chinese, English, French, German, Japanese and Spanish
- Extensive multi-media technical resources to help you
- We investigate all quality concerns to ensure our products perform to the highest standards

If the product does not perform as described on this datasheet, we will offer a refund or replacement. For full details of the Abpromise, please visit <https://www.abcam.com/abpromise> or contact our technical team.

### **Terms and conditions**

---

- Guarantee only valid for products bought direct from Abcam or one of our authorized distributors