


## Product datasheet

# Anti-Cyp26B1 antibody ab113236

[1 References](#) [3 Images](#)

### Overview

<b>Product name</b>	Anti-Cyp26B1 antibody
<b>Description</b>	Rabbit polyclonal to Cyp26B1
<b>Host species</b>	Rabbit
<b>Tested applications</b>	<b>Suitable for:</b> WB, IHC-P
<b>Species reactivity</b>	<b>Reacts with:</b> Human <b>Predicted to work with:</b> Mouse, Rat 
<b>Immunogen</b>	Recombinant full length protein corresponding to Human Cyp26B1. Database link: <a href="#">P450 26B</a>
<b>Positive control</b>	Human Adrenal gland and Human brain, cerebellum tissues; HepG2 whole cell lysate.
<b>General notes</b>	<p>The Life Science industry has been in the grips of a reproducibility crisis for a number of years. Abcam is leading the way in addressing this with our range of recombinant monoclonal antibodies and knockout edited cell lines for gold-standard validation. Please check that this product meets your needs before purchasing.</p> <p>If you have any questions, special requirements or concerns, please send us an inquiry and/or contact our Support team ahead of purchase. Recommended alternatives for this product can be found below, along with publications, customer reviews and Q&amp;As</p>

### Properties

<b>Form</b>	Liquid
<b>Storage instructions</b>	Shipped at 4°C. Upon delivery aliquot and store at -20°C. Avoid freeze / thaw cycles.
<b>Storage buffer</b>	pH: 7.00 Preservative: 0.01% Thimerosal (merthiolate) Constituents: 20% Glycerol (glycerin, glycerine), 79.99% Tris glycine
<b>Purity</b>	Protein A purified
<b>Clonality</b>	Polyclonal
<b>Isotype</b>	IgG

### Applications

## The Abpromise guarantee

Our **Abpromise guarantee** covers the use of ab113236 in the following tested applications.

The application notes include recommended starting dilutions; optimal dilutions/concentrations should be determined by the end user.

Application	Abreviews	Notes
WB		1/500 - 1/3000. Predicted molecular weight: 58 kDa.
IHC-P		Use a concentration of 10 µg/ml.

## Target

### Function

Involved in the metabolism of retinoic acid (RA), rendering this classical morphogen inactive through oxidation. Involved in the specific inactivation of all-trans-retinoic acid (all-trans-RA), with a preference for the following substrates: all-trans-RA > 9-cis-RA > 13-cis-RA. Generates several hydroxylated forms of RA, including 4-OH-RA, 4-oxo-RA, and 18-OH-RA. Essential for postnatal survival. Plays a central role in germ cell development: acts by degrading RA in the developing testis, preventing STRA8 expression, thereby leading to delay of meiosis. Required for the maintenance of the undifferentiated state of male germ cells during embryonic development in Sertoli cells, inducing arrest in G0 phase of the cell cycle and preventing meiotic entry. Plays a role in skeletal development, both at the level of patterning and in the ossification of bone and the establishment of some synovial joints.

### Tissue specificity

Highly expressed in brain, particularly in the cerebellum and pons.

### Involvement in disease

Radiohumeral fusions with other skeletal and craniofacial anomalies

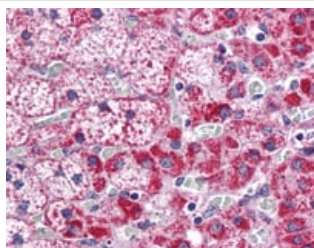
### Sequence similarities

Belongs to the cytochrome P450 family.

### Cellular localization

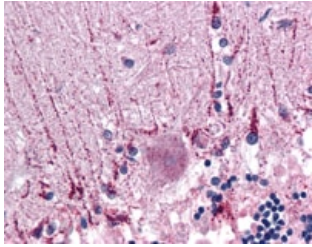
Endoplasmic reticulum membrane. Microsome membrane.

## Images



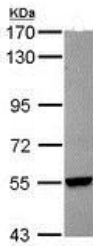
ab113236, at 10µg/ml, staining Cyp26B1 in Formalin-fixed, Paraffin-embedded Human Adrenal tissue by Immunohistochemistry.

Immunohistochemistry (Formalin/PFA-fixed paraffin-embedded sections) - Anti-Cyp26B1 antibody (ab113236)



Immunohistochemistry (Formalin/PFA-fixed paraffin-embedded sections) - Anti-Cyp26B1 antibody (ab113236)

ab113236, at 10µg/ml, staining Cyp26B1 in Formalin-fixed, Paraffin-embedded Human Brain cerebellum tissue by Immunohistochemistry.



Western blot - Anti-Cyp26B1 antibody (ab113236)

Anti-Cyp26B1 antibody (ab113236) at 1/1000 dilution + HepG2 whole cell lysate at 30 µg

**Predicted band size:** 58 kDa

7.5% SDS PAGE.

**Please note:** All products are "FOR RESEARCH USE ONLY. NOT FOR USE IN DIAGNOSTIC PROCEDURES"

### Our Abpromise to you: Quality guaranteed and expert technical support

- Replacement or refund for products not performing as stated on the datasheet
- Valid for 12 months from date of delivery
- Response to your inquiry within 24 hours
- We provide support in Chinese, English, French, German, Japanese and Spanish
- Extensive multi-media technical resources to help you
- We investigate all quality concerns to ensure our products perform to the highest standards

If the product does not perform as described on this datasheet, we will offer a refund or replacement. For full details of the Abpromise, please visit <https://www.abcam.com/abpromise> or contact our technical team.

### Terms and conditions

- Guarantee only valid for products bought direct from Abcam or one of our authorized distributors